

Blu10 Plus Prestained Protein Ladder

03 JAN 2022

Catalog Number	Size	Range
PMB01-0500	500 µl	6.5 to 270 kDa

Storage Conditions

- Stable for up to 2 weeks at 25°C.
- Stable for up to 3 months at 4°C.
- Stable for up to 24 months at -20°C.

Description

The Blu10 Plus Prestained Protein Ladder is a combination of 10 pre-stained proteins with molecular weights from 6.5 to 270 kDa. The 10 recombinant proteins are covalently coupled with blue chromophore, while 2 orange bands at 30 kDa and 270 kDa and a green band at 52 kDa serve as reference bands. The Blu10 Plus Prestained Protein Ladder keeps track of the size and separation of proteins during SDS-polyacrylamide gel electrophoresis, approximating protein size and validating Western transfer efficiency on PVDF, nylon, or nitrocellulose membranes.

Kit Content(s)

Blu10 Plus Prestained Protein Ladder	500 µl x 1 vial
--------------------------------------	-----------------

Storage Buffer

62.5 mM Tris-H₃PO₄ (pH 7.5 at 25 °C), 1 mM EDTA, 2% SDS, 10 mM DTT, 1 mM NaN₃, 33% glycerol.

Required materials but not provided

- Vertical Electrophoresis system
- Power supplies
- Vortex or equivalent
- Microcentrifuge

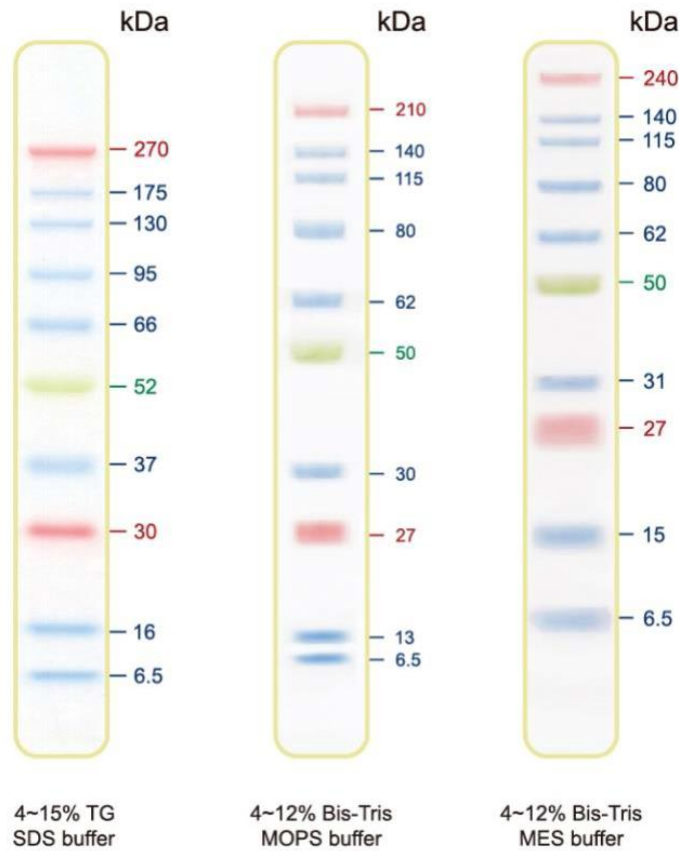
Reaction Setup

3 µl or 5 µl per loading for clear visualization during electrophoresis on 15-well or 10-well mini-gel, respectively. 2.5 µl per well for general Western transferring.



Guide for Molecular Weight Estimation (kDa)

Refer to the Blu10 Plus Prestained Protein Ladder patterns in various electrophoresis conditions:



Important notes

The molecular weight of each protein (kDa) was measured against an unstained protein ladder in every electrophoresis condition. Additional data should be considered for a more accurate adjustment.