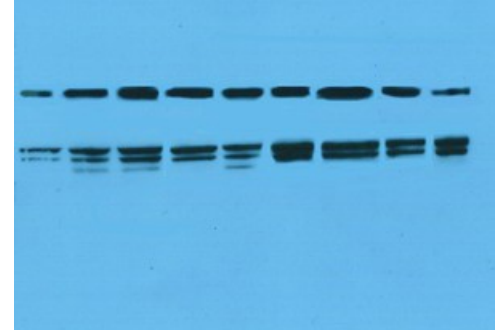


Autoradiography Products

Autoradiography X-Ray Films

High sensitivity and consistent blue films for autoradiography

Classic Blue™ Autoradiography Films gives you what you expect in a high quality autoradiography film, comparing with Kodak, Amersham and Sterling autoradiography films, without paying the high prices! It is available as single emulsion (SE) and double emulsion (BX) versions.



Key features:

- Exceptional Clarity
- Extremely Low Blue Background
- No Obscure Signals from Samples
- Optimized to get superior results (blot, sequencing)
- Excellent lot-to-lot consistent results
- Use Manually or with Automatic Processing
- Publishable grade autoradiographs

Additional features of Classic Blue BX:

- Double emulsion boosts the signal sensitivity
- Exceptional clarity with extremely low backgrounds

Additional features of Classic Blue SE:

- Exemplary resolution with sharp contrast.
- Ideal for sequencing when using the above isotopes
- No Obscure Signals from Samples with low levels of radioactivity

Applications - General:

- Use for **autoradiography** with radioelements and for chemiluminescence (luminol).
- Exposure of **blotting** experiments and **sequencing** gels
- Manual or Automatic Development - Publishable grade
- Use with calcium tungstate or blue rare earth screens ^(b)

Applications - Classic Blue BX:

- Optimized for chemiluminescence
- Ideal with ³²P, ¹²⁵I, and excellent also for ³³P, ³⁵S and ¹⁴C
- compares with Kodak BiomaxMS, X-OMAT-AR5, A-OMAT LS; with Hyperfilm MP; and with SX autoradiography films

Applications - Classic Blue SE:

- Autoradiography with ³³P, ³⁵S and ¹⁴C
- Suitable for chemiluminescence
- compare with X-OMAT-SB; with Hyperfilm Beta Max; and with O14 O11 autoradiography films

^(b)When used with our Special Classic Rare Earth Intensifying Screens the sensitivity is enhanced approximately 4 to 4½ times compared to using Calcium Tungstate Intensifying Screens. Best when used with ³²P and ¹²⁵I

Radiographic film BX (double emulsion)

sheets 12.5x17.5cm (5"x8" in)	#48335A, 100u
sheets 20x25cm (8"x10" in)	#67895A, 100u
sheets 35x40cm (14"x17" in)	#T3457A, 100u

Radiographic film SE (single emulsion)

sheets 20x25cm (8"x10" in)	#DW2001 , 100u
sheets 35x40cm (14"x17" in)	#DW2011 , 100u

Storage: Room temperature ☞ - Protect from light and moisture

Contact your local distributor

uptima@interchim.com

Related / associated products and documents

Glow Writer™

- Fine Point Nib- Provides fine writing and greater information density
- Ideal glow intensity and afterglow duration- Helps prevent over-and under exposure
- No Ink Clogs- Low ink viscosity and porous nib prevents ink from clogging



Glow Writer™ is a phosphorescent ink marking pen for making experimental notations and other markings on chemiluminescent and radioisotope-labeled substrate materials (e.g., transfer membranes, dried gels, genomic and proteomic matrices, etc.) being analyzed by X-ray film autoradiography or electronic imaging. The marker delivers a phosphor-containing ink through a fine point porous nib to provide fine writing and greater information density. Before exposure to X-ray film, the phosphorescent writing is excited by room light. A phosphor ink having an optimum concentration of phosphor and a relatively short afterglow half-life (approximately 2-3 minutes) has been selected so that upon exposure to X-ray film, autoradiographic exposures of almost any duration will be easily readable on the film. The fine point nib is easily replaceable if it dries out.

Glow Writer™	DV7551, 1u
---------------------	-------------------

Fine-Point Phosphorescent Marking Pen for Laboratory Autoradiography

Glow Writer™ Fine Point Nibs	DV7553, 100u
-------------------------------------	---------------------

Also available: Radtape's phosphorescent adhesive labels
 Radiographic cassettes – Stainless Stells Cassettes, Push-Button Cassettes
 Regular Calcium Tungstate Screens
 Enhanced Calcium Tungstate Screens
 Gives 30-40% more sensitivity than regular Calcium Tungstate Compare to DuPont's Lightning Plus

ECL HRP SUBSTRATES

UptiLight WB One Spray	BM4961, 100ml
-------------------------------	----------------------

Recommended for standard applications and ease of use: one component, just spray it!

UptiLight WB HighSensitivity	98490A, 200 ml	98490B, 500ml
-------------------------------------	-----------------------	----------------------

Recommended for standard applications

UptiLight WB UltraSensitivity	58372A, 60ml	58372B, 120ml
--------------------------------------	---------------------	----------------------

Recommended when ultimate sensitivity is required.

Buffers & Saturating agents

BSA powder	UPQ84170, 100g	UPQ84172, 1Kg
BSA 30% solution	UP900100, 50ml	UP900101, 500ml
BSA SeaBlock solution (non mammalian serum)	UP40301A, 500ml	
Tween® 20, pure	15874A, 1 L	
Tween® 20, 20% solution, oxidant free	UP158740, 5 x 10 ml	
PBS powder packs (makes 10L)	UP68723A, 1 pack	

Blotting membranes - Protran

	BA83 (0.2µm)	BA85 (0.45µm)
--	---------------------	----------------------

Sheets 20 x 20 cm	S31441, 5u	BN3801, 5u
--------------------------	-------------------	-------------------

Sheets 30 x 60 cm	875900, 5u	324621, 5u
--------------------------	-------------------	-------------------

Roll 30 cm x 3 m	BN3841, 1u	U60640, 1u
-------------------------	-------------------	-------------------

Ordering information

For any information, please ask : Uptima / Interchim; Hotline : +33(0)4 70 03 73 06

Disclaimer : Materials from Uptima are sold **for research use only**, and are not intended for food, drug, household, or cosmetic use. Uptima is not liable for any damage resulting from handling or contact with this product.

Rev.K11E-J04E-I10E

Contact your local distributor

uptima@interchim.com

Uptima, powered by
 213 Avenue J.F. Kennedy - BP 1140
 03103 Montluçon Cedex - France
 Tél. 04 70 03 88 55 - Fax 04 70 03 82 60