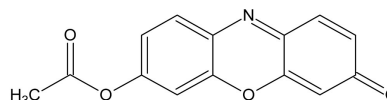


## Resorufin Acetate

*Esterase substrate, also used for aldehyde dehydrogenase and chymotrypsin activity assays*

### Product Description

<b>Name :</b>	<b>Resorufin Acetate</b>
<b>Catalog Number :</b>	FP-47566A 25 mg
<b>CAS :</b>	90133-77-0
<b>Structure :</b>	C <sub>14</sub> H <sub>9</sub> NO <sub>4</sub>
<b>Molecular Weight :</b>	MW= 255,23
<b>Solubility:</b>	DMSO
<b>Absorption / Emission :</b>	$\lambda_{exc}/\lambda_{em}$ (MeOH) = 500/593nm



**Storage:** Store at cold (+4°C). Protect from light and moisture

### Introduction

This product is common long-wavelength esterase substrate, useful in cell viability assays, or for high throughput screening of esterase activity in a live cell format.

Resorufin acetate is also a substrate for sheep liver cytosolic aldehyde dehydrogenase (CAD) as well as for assay of chymotrypsin activity, where the absorbance of the product resorufin (# 95432A) is several times more intense than that formed by the widely used p-nitrophenyl acetate.

### Directions for use

#### Guidelines for use

Protocol may be found in the literature.

#### References

- **Bottcher D, et al.**, "High-throughput screening of activity and enantioselectivity of esterases." *Nature Protocols* 1: 2340-2343 (2006)
- **Kazlauskas, RJ** "Quantitative Assay of Hydrolases for Activity and Selectivity Using Color Changes in Enzyme Assays", *Jean-Louis Reymond, ed., Wiley-VCH Verlag GmbH & Co. KGaA* (2006)
- **Kitson, TM, et al.** "Studies of the esterase activity of cytosolic aldehyde dehydrogenase with resorufin acetate as substrate." *Biochem. J.* 322: 701-708 (1997) [Abstract](#)

### Ordering information

[Catalog size quantities and prices may be found at www.interchim.com/](http://www.interchim.com/)

Please inquire for higher quantities (availability, shipment conditions).

For any information, please ask : FluoProbes® / Interchim; Hotline : +33(0)4 70 03 73 06

**Disclaimer :** Materials from FluoProbes® are sold **for research use only**, and are not intended for food, drug, household, or cosmetic use. FluoProbes® is not liable for any damage resulting from handling or contact with this product.

[Info@fluoprobes.com](mailto:Info@fluoprobes.com)  
[Technical-support@fluoprobes.com](mailto:Technical-support@fluoprobes.com)  
[Order-online@fluoprobes.com](mailto:Order-online@fluoprobes.com)

Contact your local distributor

FluoProbes®, powered by

