

PURIFLASH® 800

800 ml/min @ up to 10 bar

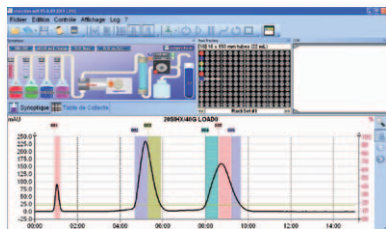
Process Chromatography

Large Scale Purification

✓ Flash columns up to F1600 format & more

puriFlash® 800 is the large scale purification machine that support columns up to 150 mm i.d. (@ optimum flow rate). The washing disc allows mobile phases necessary to achieve purification of biomolecules by reverse phase.

Interchim® Software ver. 5.0



One customizable screen to manage the whole process to create the method, to launch the purification & to control the process during the purification up to the report. User Profile definition: Customization of the GUI and its functions User profile management and password Definition of the reporting format, etc... Unique features: TLC to Flash transposition, "Best chromatogram", Automatic gradient optimization, Intelligent Continuous Mode, Dual triggered collection, Timed auto shut-off, Air purge...etc...

Quaternary - P/N: E06301
Binary - P/N: E06300

Unit Control
Touch Screen 10.5"
USB: 4
RJ45
Flexible Keyboard
Software
Interchim Software vers. 5.0

Fraction Collector
Racks: 4 short racks
176 standard tubes 18 x 150mm



Pump
Flow rate: 800ml/min
Pressure max.: 10 bar
Binary or quaternary Gradient
Washing discs
Leak detection

Injection
Injection mode: Liquid - Dry load
Large injection volume by external pump

Detection:
UV: 200 - 600nm
Dual wavelength & scan collection
Spectral view & purity confirmation
Flow Cell - optical length: 0.3mm
Second Detector Channel

Integrated flash column holder
Extension kit for large columns

Options...

Detector
UV 190 - 840 nm - (JO5140)

Column Holder
Stand Alone - (PF4530)
Pre-column holder - (IV1710)

Fraction collector
Drainage system of the tray collector - (DZ7790)
Fume enclosure - (FP4350)
Funnel rack set - (FJ4330)

Unit Control
Bar code reader - (GO2380)
CCD Camera - (GO2390)
Flexible Keyboard - (LO4300 - QWERTY)
(DV4120 - AZERTY)

Safety solvent
Solvent level sensor Global - (FSP720) or
Solvent level sensor Separated - (FSP730)
Safety solvent bottle cap (1u) - (JO1620)
Safety waste cap - (JO4500)

Main Features	Flash Chromatography		Process Chromatography		Ultra Performance Flash Purification		prep LC Method Development		prep LC	
	PF-215	PF-800	PF-430	PF-450	PF-4100	PF-4250-040	PF-4250-250			
Pump										
Flow rate	200 ml/min	800 ml/min	200 ml/min	250 ml/min	250 ml/min	40 ml/min	250 ml/min			
Pressure max.	15 bar	10 bar	30 bar	50 bar	100 bar	250 bar	250 bar			
Quaternary Gradient	option	option	yes	yes	yes	yes	yes			
Binary Gradient	yes	yes	n/a	n/a	n/a	n/a	n/a			
Mixing chamber	fixed volume	fixed volume	fixed volume	fixed volume	adjustable volume	adjustable volume	adjustable volume			
Air purge	option	no	option	yes	yes	yes	yes			
Washing disc	yes	yes	yes	yes	yes	yes	yes			
Detector										
UV Detection	200 - 600 nm	200 - 600 nm	200 - 600 nm	200 - 600 nm	200 - 600 nm	200 - 600 nm	200 - 600 nm			
	dual wavelength collection	dual wavelength collection	dual wavelength collection	dual wavelength collection	dual wavelength collection	dual wavelength collection	dual wavelength collection			
	scan collection	scan collection	scan collection	scan collection	scan collection	scan collection	scan collection			
Spectral view & purity confirmation	yes	yes	yes	yes	yes	yes	yes			
Flow cell-optical length	0.3 mm	0.3 mm	0.3 mm	0.3 mm	0.3 mm	0.3 mm	0.3 mm			
Second detector channel	yes	yes	yes	yes	yes	yes	yes			
UV Detection 190 - 840 nm	option	option	option	option	option	option	option			
ELSD Detection	option	no	option	option	option	option	option			
Mass Spec - simple Quad APCI	option	no	option	option	option	option	option			
Injection										
Direct fixed holder	option	yes	yes	yes	yes	yes	yes			
6 ways electrical valve	option	option	option	yes	yes	yes	yes			
Injection mode: liquid - Dry load	yes	yes	yes	yes	yes	yes	yes			
Large injection volume	external pump	external pump	external pump	external pump	external pump	external pump	external pump			
Additional valves										
Back Flush	option	no	option	option	option	option	option			
Column selection	option	no	option	option	option	option	option			
Column holder										
Integrated	option	yes	yes	yes	yes	yes	yes			
Stand Alone	option	option	option	option	option	option	option			
Pre-column holder	option	option	option	yes	yes	yes	yes			
Extension kit for large columns	option	yes	option	yes	yes	yes	yes			
Adapters semi-prep/prep	no	no	option	yes	yes	yes	yes			
Fraction Collector										
Racks	4 short racks	4 short racks	4 short racks	4 short racks	4 short racks	4 short racks	4 short racks			
Std: 18 x 150mm tubes	176	176	176	176	176	176 (16 x 150mm)	176			
Unit control										
Touch screen 10.5"	yes	yes	yes	yes	yes	yes	yes			
USB	4	4	4	4	4	4	4			
RJ45	yes	yes	yes	yes	yes	yes	yes			
Flexible keyboard	option	yes	yes	yes	yes	yes	yes			
Software										
Interchim® soft ver. 5.0	yes	yes	yes	yes	yes	yes	yes			
Solvent tray										
	option	yes	yes	yes	yes	yes	yes			
Column compatibility										
Particle size	25µm, 30µm, 50µm	25µm, 30µm, 50µm	15µm, 25µm, 30µm, 50µm	15µm, 25µm, 30µm, 50µm	10µm, 15µm, 25µm, 30µm, +	5µm, 10µm, 15µm, +	5µm, 10µm, 15µm, +			
Miscellaneous										
Leak detection	yes	yes	yes	yes	yes	yes	yes			
Solvent level monitoring	option	option	option	option	option	option	option			
Size										
	W: 18.9" - 48cm D: 17.5" - 44.5cm H: 27" - 69cm	W: 18.9" - 48cm D: 17.5" - 44.5cm H: 27" - 69cm	W: 18.9" - 48cm D: 17.5" - 44.5cm H: 30" - 77cm	W: 18.9" - 48cm D: 17.5" - 44.5cm H: 30" - 77cm	W: 18.9" - 48cm D: 17.5" - 44.5cm H: 30" - 77cm	W: 18.9" - 48cm D: 17.5" - 44.5cm H: 30" - 77cm	W: 18.9" - 48cm D: 17.5" - 44.5cm H: 30" - 77cm			
Option										

Fume Enclosure, Drainage System of the tray collector, Bar-code reader, COD Camera, Solvent level sensor 5.1, 5.5, Security solvent bottle caps, Open Access Lab, Additional flow cells: 1.3 mm & 2.4 mm optical path length, Other racks available on request.