

interchim®

INTERFINE CHEMICALS

ANALYTICAL SCIENCES

BIOCHROMATOGRAPHY

LIFE SCIENCES

Tél. +33 (0)4 70 03 73 09 ■ interchrom@interchim.com

Technical Data Sheet

PURIFLASH® 4125

250 ml/min @ up to 125 bar

Ultra Performance Flash Purification™

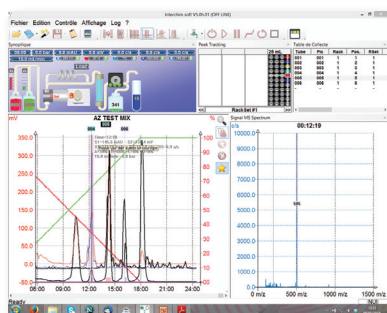
Premium Flash / prep-LC system

Lab Scale

- ✓ Flash columns up to F0800 format
- ✓ Prep-LC columns up to 80mm id
- ✓ 2X opt. flowrate 5 µm Si column
10 µm C18 column

puriFlash® 4125 is a Premium, easy to use Flash-Prep LC system. It fully support the UPFP concept by achieving accelerated throughput using 15µm puriFlash® and up to 5 µm prep LC columns. It secure and guarantee you one shot purifications.

Interchim® Software ver. 5.0



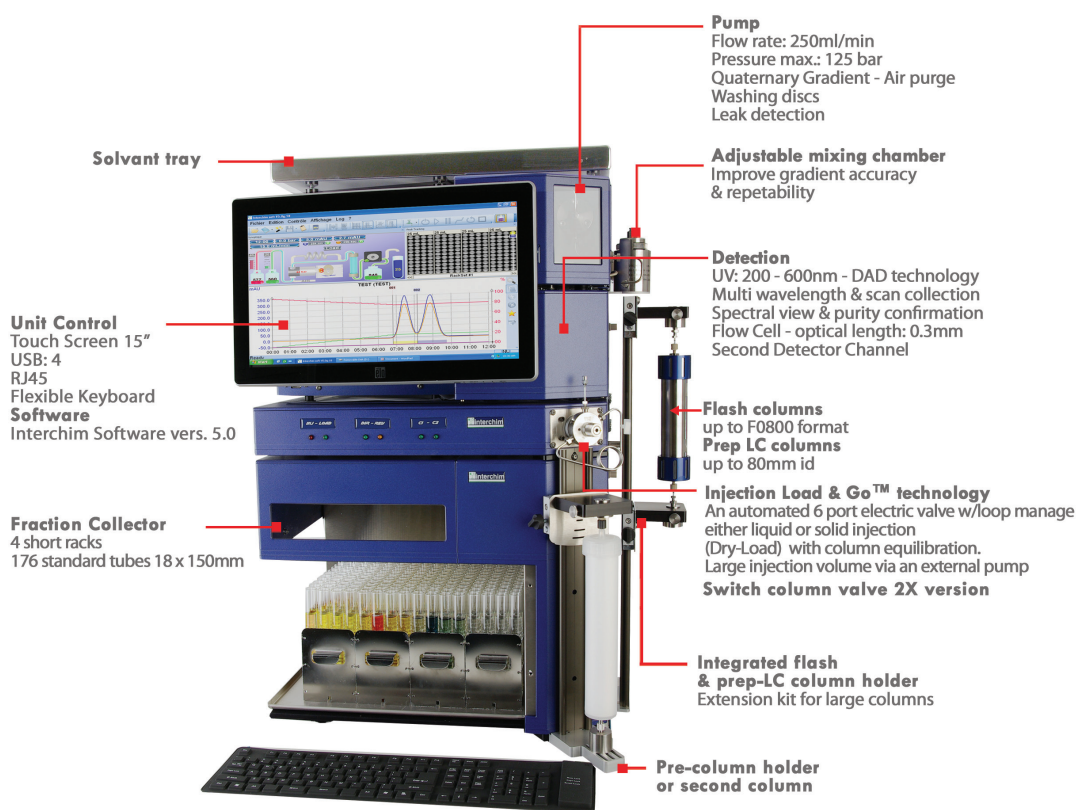
One customizable screen to manage the whole process to create the method, to launch the purification & to control the process during the purification up to the report. User Profile definition:

Customization of the GUI and its functions
User profile management and password
Definition of the reporting format, etc...

Unique features:

TLC to Flash transposition, "Best chromatogram",
Automatic gradient optimization, Intelligent
Continuous Mode, Dual triggered collection,
Timed auto shut-off, Air purge...etc...

P/N: 117200



Options - Accessories

Detector

- UV 190 - 840 nm - (GO9630)
- ELSD Integrated (1A3640)
- puriFlash MS 1200m/z (1H5460)
2000m/z (1G6770)
- RI - (FSQ600)

Valves

- Backflush - (LO4290)
- Column selection - PF4125-2X (117860)

Column Holder

- Stand Alone Flash (PF4530)
- Stand Alone Prep (LV8210)

Fraction collector

- Drainage system of the tray collector - (DZ7790)
- Fume enclosure without extractor - (PF4350)
- Fume enclosure with extractor - (SH5630)
- Leak sensor (1L8510)
- Different rack size available

Unit Control

- Bar code reader - (GO2380)
- CCD camera - (GO2390)

Safety solvent

- Solvent level sensor Global - (FSP720) or
Solvent level sensor Separated - (FSP730)
- Safety solvent bottle caps - (DV2760)
- Safety waste cap - (IO6930 or JO4500)

Open Access Lab

- 10 columns sequential - (JO3750)

ANALYTICAL SCIENCES

ITM-20151011-C/P



interchim®

® 211 bis, avenue JF Kennedy
BP 1140 - 03100 Montluçon
Fax 33 (0)4 70 03 82 60

■ Hotline +33 (0)4 70 03 73 09 • interchrom@interchim.com ■



UNION EUROPÉENNE

OPERAÇÃO INTERIM

Projet co-financé par l'Union

européenne

Fonds européen de

développement régional FEDER

Main Features	Flash Chromatography		Ultra Performance Flash Purification		Process Chromatography	
	PF-215	PF-430	PF-450	PF-4125		PF-4250
Pump						
Flow rate	200 ml/min	200 ml/min	250 ml/min	250 ml/min	250 ml/min	750 ml/min
Pressure max.	15 bar	30 bar	50 bar	125 bar	250 bar	7 bar
Quaternary Gradient	option	yes	yes	yes	yes	option
Binary Gradient	yes	n/a	n/a	n/a	n/a	yes
Mixing chamber	fixed volume	fixed volume	fixed volume	adjustable volume	adjustable volume	fixed volume
Air purge	option	option	yes	yes	yes	no
Washing disc	yes	yes	yes	yes	yes	no
Detector						
UV Detection	DAD 200 - 600 nm scan collection	DAD 200 - 600 nm scan collection	DAD 200 - 600 nm scan collection	DAD 200 - 600 nm scan collection	DAD 200 - 600 nm scan collection	DAD 200 - 600 nm scan collection
Spectral view & purity confirmation	yes	yes	yes	yes	yes	yes
Flow cell-optical length	0.3 mm	0.3 mm	0.3 mm	0.3 mm	0.3 mm	0.3 mm
Second detector channel	yes	yes	yes	yes	yes	yes
UV Detection 190 - 840 nm	option	option	option	option	option	option
ELSD Integrated	option	option	option	option	option	no
Mass Spec - 1200 m/z	option	option	option	option	option	no
Mass Spec - 2000 m/z	option	option	option	option	option	no
RI	option	option	option	option	option	no
Injection						
Direct fixed holder	option	yes	yes	yes	yes	yes
6 ways electrical valve	option	option	yes	yes	yes	no
Injection mode: liquid - Dry load	yes	yes	yes	yes	yes	yes
Large injection volume (external pump)	option	option	option	option	option	no
Additional valves						
Back Flush	option	option	option	option	yes	no
Column selection	option	option	option	option	option	no
Manual purge valve / Flash	option	option	option	option	option	option
Manual purge valve / Prep	option	option	option	option	yes	no
Column holder						
Integrated	option	yes	yes	yes	yes	yes
Stand Alone	option	option	option	option	option	option
Pre-column holder	option	option	yes	yes	yes	yes
Extension kit for large columns	option	option	yes	yes	yes	yes
Adapters semi-prep/prep	no	option	yes	yes	yes	no
Fraction Collector						
4xRacks	176 tubes - 18x150mm	176 tubes - 18x150mm	176 tubes - 18x150mm	176 tubes - 18x150mm	176 tubes - 18x150mm	176 tubes - 18x150mm
Unit control						
Touch screen	15"	15"	15"	15"	15"	15"
USB	4	4	4	4	4	4
RJ45	yes	yes	yes	yes	yes	yes
Flexible keyboard	option	yes	yes	yes	yes	yes
Software						
Interchim® soft ver. 5.0	yes	yes	yes	yes	yes	yes
Solvent tray						
option	option	yes	yes	yes	yes	yes
Column compatibility						
Particle size	25µm, 30µm, 50µm	15µm, 25µm, 30µm, 50µm	15µm, 25µm, 30µm, 50µm	10µm, 15µm, 25µm, 30µm, +	5µm, 10µm, 15µm, +	25µm, 30µm, 50µm
Miscellaneous						
Leak detection / Pump	yes	yes	yes	yes	yes	yes
Leak detection / Collector	option	option	option	option	option	option
Solvent level monitoring	option	option	option	option	option	option
Size						
	W: 18.9" - 48cm D: 17.5" - 44.5cm H: 27" - 69cm	W: 20.5" - 52cm D: 17.5" - 44.5cm H: 27" - 69cm	W: 23.6" - 60cm D: 21.3" - 54cm H: 30" - 77cm	W: 23.6" - 60cm D: 21.3" - 54cm H: 30" - 77cm	W: 23.6" - 60cm D: 20.5" - 52cm H: 33.5" - 85cm	W: 23.6" - 60cm D: 21.3" - 54cm H: 27" - 69cm
Option	Fume Enclosure. Drainage System of the tray collector. Bar-code reader. CCD Camera. Solvent level sensor 5.1. 5.5. Security solvent bottle caps. Open Access Lab. Additional flow cells: 1.3 mm & 2.4 mm optical path length. Other racks available on request.					