

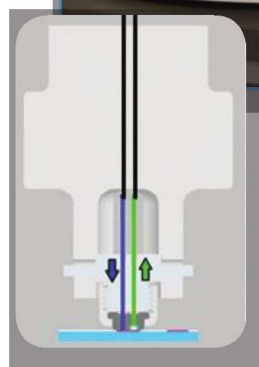
DIRECT MASS ANALYSIS FROM TLC PLATES

Advion

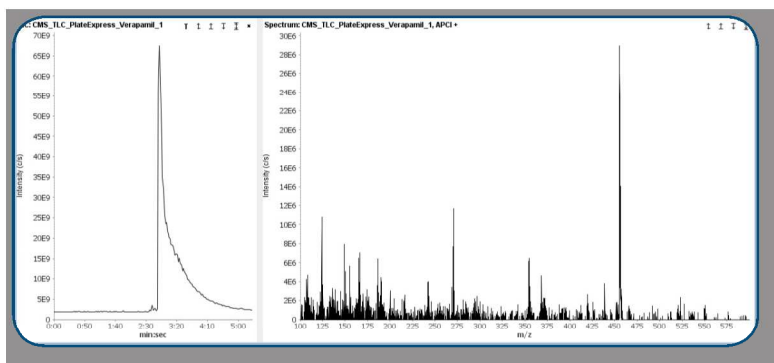
Thin-layer chromatography (TLC) is a routine, reliable method used in most chemistry laboratories, but traditional visualization techniques give no structural information on the TLC spots. Mass Spectrometry is a powerful technique for identifying spots, but traditional, manual steps involving scraping spots from the plate, extraction in suitable solvents and finally reconstitution in solvent appropriate for injection into the mass spectrometer (MS), make obtaining spectra difficult and time consuming.

Plate Express™ is a device that provides a simple, automated means of obtaining mass spectra directly from TLC plates, creating a technique known as TLC/MS. Combined with Advion's **expression**® compact mass spectrometer (CMS) this becomes TLC/CMS. Using this technique chemists can quickly and confidently identify products even in complex mixtures without additional sample preparation.

- Identify spots in <1 minute
- Avoid the risk of overloading the mass spectrometer - TLC spots contain the ideal amount of sample for mass spectrometry
- Simplify the process of obtaining spectra - ideal for multi-user labs
- No scraping TLC spots



Place the TLC plate into the Plate Express interface (patent pending) and align the spot of interest beneath the laser indicator. Click "analyze" in the Mass Express software.



Advion's unrivalled expertise in mass spectrometry has delivered a mass spec solution just for chemists. Whether you are a biopharmaceutical company, academic research or teaching lab, or any industry requiring routine mass assays, the **expression** CMS delivers high performance in a compact, easy-to-use package at an affordable price.