

Reactor-Ready™ Lab Reactors

Patented Design

Innovative, patented,
low cost, reaction work
stations for glass
vessels from
100 ml to 5 litres



-70°C

230°C

Compatible Control

21.73

21.73°C

20.00°C

Pressure

Flowrate

Control

Alarm

Power

Stop

Reset

On

Off

Test

Help

Exit

Back

Forward

Search

Print

Copy

Paste

Delete

Insert

Remove

Undo

Redo

Cancel

OK

Yes

No

Abort

Continue

Pause

Resume

Stop

Restart

Exit

Back

Forward

Search

Print

Copy

Paste

Delete

Insert

Remove

Undo

Redo

Cancel

OK

Yes

No

Abort

Continue

Pause

Resume

Stop

Restart

Exit

Back

Forward

Search

Print

Copy

Paste

Delete

Insert

Remove

Undo

Redo

Cancel

OK

Yes

No

Abort

Continue

Pause

Resume

Stop

Restart

Exit

Back

Forward

Search

Print

Copy

Paste

Delete

Insert

Remove

Undo

Redo

Cancel

OK

Yes

No

Abort

Continue

Pause

Resume

Stop

Restart

Exit

Back

Forward

Search

Print

Copy

Paste

Delete

Insert

Remove

Undo

Redo

Cancel

OK

Yes

No

Abort

Continue

Pause

Resume

Stop

Restart

Exit

Back

Forward

Search

Print

Copy

Paste

Delete

Insert

Remove

Undo

Redo

Cancel

OK

Yes

No

Abort

Continue

Pause

Resume

Stop

Restart

Exit

Back

Forward

Search

Print

Copy

Paste

Delete

Insert

Remove

Undo

Redo

Cancel

OK

Yes

No

Abort

Continue

Pause

Resume

Stop

Restart

Exit

Back

Forward

Search

Print

Copy

Paste

Delete

Insert

Remove

Undo

Redo

Cancel

OK

Yes

No

Abort

Continue

Pause

Resume

Stop

Restart

Exit

Back

Forward

Search

Print

Copy

Paste

Delete

Insert

Remove

Undo

Redo

Cancel

OK

Yes

No

Abort

Continue

Pause

Resume

Stop

Restart

Exit

Back

Forward

Search

Print

Copy

Paste

Delete

Insert

Remove

Undo

Redo

Cancel

OK

Yes

No

Abort

Continue

Pause

Resume

Stop

Restart

Exit

Back

Forward

Search

Print

Copy

Paste

Delete

Insert

Remove

Undo

Redo

Cancel

OK

Yes

No

Abort

Continue

Pause

Resume

Stop

Restart

Exit

Back

Forward

Search

Print

Copy

Paste

Delete

Insert

Remove

Undo

Redo

Cancel

OK

Yes

No

Abort

Continue

Pause

Resume

Stop

Restart

Exit

Back

Forward

Search

Print

Copy

Paste

Delete

Insert

Remove

Undo

Redo

Cancel

OK

Yes

No

Abort

Continue

Pause

Resume

Stop

Restart

Exit

Back

Forward

Search

Print

Copy

Paste

Delete

Insert

Remove

Undo

Redo

Cancel

OK

Yes

No

Abort

Continue

Pause

Resume

Stop

Restart

Exit

Back

Forward

Search

Print

Copy

Paste

Delete

Insert

Remove

Undo

Redo

Cancel

OK

Yes

No

Abort

Continue

Pause

Reactor-Ready Lab Reactor

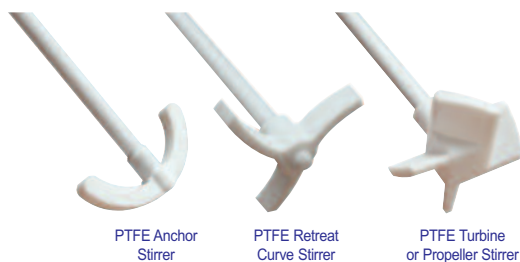
Replace multiple reaction set-ups with a single universal system that accepts vessels from 100 ml to 5 litres



A single reaction system that accepts a range of different vessel sizes



A choice of popular stirrer paddles



Convenient vessel kits make buying vessels and accessories easy and cost effective



Unique vessel clamp

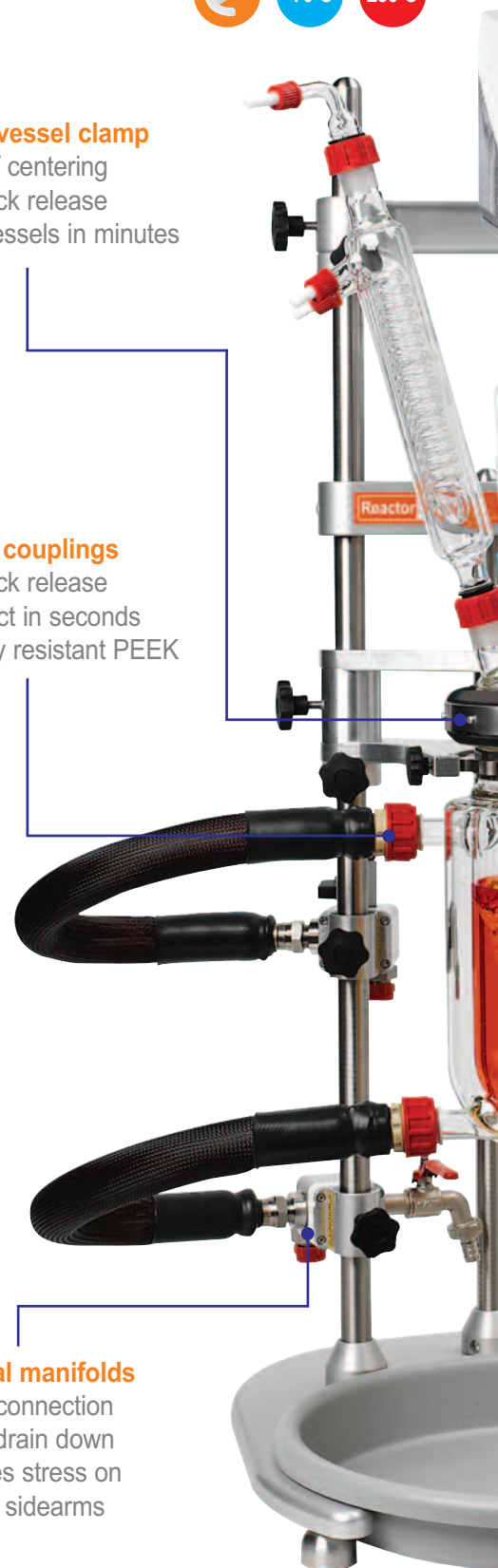
- self centering
- quick release
- change vessels in minutes

Hose couplings

- quick release
- connect in seconds
- chemically resistant PEEK

Individual manifolds

- easy connection
- easy drain down
- reduces stress on vessel sidearms



Change to Reactor-Ready

It improves your chemistry by saving space, time and money



Simple stirrer alignment

- slide and glide
- set and lock

Patented stirrer coupling

- drop in
- no tools
- no fuss

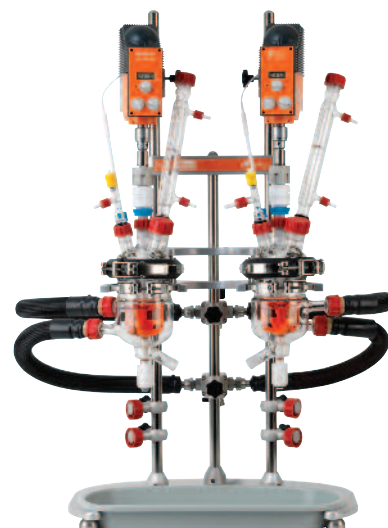
Standard vessels

- 250 ml to 5 litres
- vacuum jacketed option

Process vessels

- mimic plant scale geometry
- 100 ml to 5 litres
- vacuum jacketed option

Reactor-Ready Duo accepts two vessels and allows reactions in parallel or series



Optional AVA Control Software allows you to log and control stirrers, circulators, balances, pumps, temperature sensors and other devices



Accepts all leading brands of overhead stirrer



NEW



Compatible with all leading brands of circulator or thermoregulator

Reactor-Ready

Swap reaction vessels in minutes, NOT hours

Reactor-Ready is designed as a universal reactor work station that can be used for different vessel sizes and different experiments. Reactor-Ready can easily and quickly be configured to suit the chemistry and scale you need for each project.

The beauty of Reactor-Ready is that this one reactor work station can replace many, saving you money and fumehood space.

Features include

- Rapid vessel exchange with quick-release vessel clamp and hose couplings.
- Range of single and vacuum jacketed vessels from 100 ml to 5 litres.
- Range of process vessels to mimic larger scale plant or manufacturing reactors.
- Accepts all leading brands of overhead stirrer and allows easy, tool-free adjustment.
- Triple support stand features heavy duty stainless steel support rods for strength and stability.
- Self aligning stirrer coupling engages without the need for tools.
- Temperature range: -70 °C to +230 °C (jacket temperature)
- Innovative hose manifolds allow easy thermofluid drain down.
- Wide range of accessory glassware including condensers, dropping funnels etc.
- Optional software allows you to log and control stirrers, circulators, balances, pumps, temperature sensors and other devices.

Patented vessel clamp allows rapid vessel exchange without tools

- Unique clamp design allows vessel to be supported and clamped by a single operator in less than a minute.
- Use the same clamp to hold all vessel sizes; plus the vessels remain supported even when the clamp is unlocked.



Vessel support collar aids vessel loading

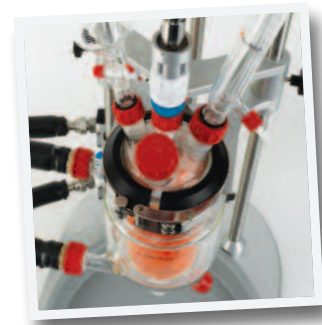
- Reactor-Ready uses an innovative support collar fitted to the neck of each vessel, which allows the vessels to be swapped in and out of the Reactor-Ready core like a cartridge.
- The stainless steel collar locks securely into the support plate on the framework and allows the vessel to remain supported, even when not clamped.
- Vessel exchange is tool free and can easily be undertaken by one person.

Unique self aligning stirrer coupling saves time when changing vessels

- Patented drop-in stirrer coupling engages easily without the need for tools.
- Simply lower the stirrer coupling to engage with the stirrer guide below.
- The stainless steel stirrer coupling will fit in any standard stirrer chuck (for 10mm diameter)
- Powerful stirring up to 500 rpm, or 800 rpm for short periods (subject to motor selected).



Stainless steel vessel support collar

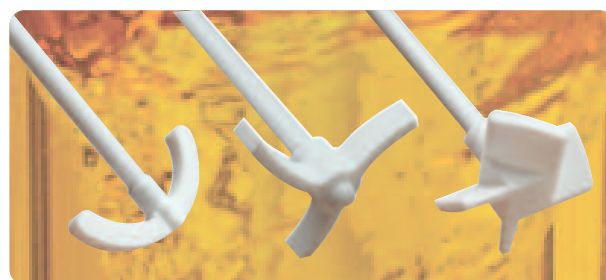


Choice of PTFE stirring shafts

- Reactor-Ready is offered with a choice of PTFE stirring shafts: anchor, retreat curve and turbine/propeller styles.
- PTFE anchor stirring shaft is included with all standard reaction vessel kits
- PTFE turbine stirring shaft is included with all process reaction vessel kits.

I-beam support allows the stirring motor to be positioned with ease

- I-beam allows the stirrer motor to be raised or lowered without needing to remount the stirrer.
- Adjustable safety stop collars located below the I-beam allow the user to lower the stirrer motor to a set position for ease of operation and safety.
- Reactor-Ready accepts all leading brands of motor or air-powered overhead stirrer with support rods up to 16 mm in diameter.



PTFE anchor stirrer

PTFE retreat curve stirrer

PTFE turbine/propeller stirrer

PTFE Stirrer Guide

- The Reactor-Ready's PTFE stirrer guide screws directly on to the glass lid and features a unique extended support which minimises wobble even at high speeds.
- The stirrer guide is chemically inert, gas-tight and suitable for work under vacuum.



PTFE stirrer guide provides whip-free agitation

Quick release PEEK hose couplings

- Operates over the temperature range -70 °C to +230 °C (jacket temperature).
- Quick-release, screwthread design allows rapid exchange of vessels without the use of tools.
- Simply tighten by hand for a leak-tight seal.
- PEEK with Viton O-rings ensures all wetted parts are chemically resistant.
- Lightweight, metal-free design prevents chipping and minimises strain on the glass fitting.
- All hoses have a 12 mm ID, maximising thermofluid flow and heating/cooling performance.
- Low thermal conductivity of PEEK reduces frosting when cooling.



Hose manifolds allow easy thermofluid drain down

- The inlet and outlet hoses from the Reactor-Ready vessel connect to manifolds attached to the support rod. These manifolds serve two important functions:
 1. Support the hoses running from the vessel, thereby eliminating stress on the glass sidearms.
 2. Allows thermofluid drain-down, which provides a quick and clean method of removing the thermofluid from the vessel jacket when changing vessels.
- By opening the venting valve on the (upper) outlet manifold, thermofluid drains from the vessel back to the thermoregulator under gravity.
- Opening the drain tap on the (lower) inlet manifold allows drainage to an external reservoir.



Case study: Accelerating process optimisation in a busy chemical development lab

Researchers at a leading US pharmaceutical company invested in Reactor-Ready for use in their chemical development lab. The process R&D group, specialising in small molecule research, are using Reactor-Ready for optimising new or existing chemistry, identifying and eliminating impurities, and screening process variables for transfer to kilo-labs, pilot plant and manufacturing sites.

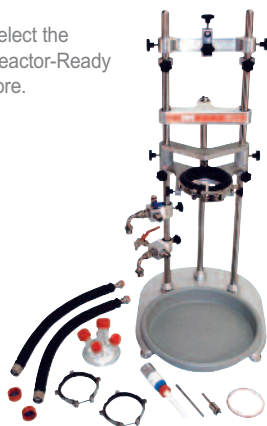
Commenting on their existing methods the Lead Scientist said, "We use round bottom flasks, but temperature control via mantles or oil baths is poor. Alternatively, when we use traditional jacketed reactor vessels, we need a different set up for every scale change. Even changing a reactor of the same size takes ages."

"So I liked Reactor-Ready the minute I saw how easy it was to change reactors. Reactor-Ready does it all. I get one stand which fits all sizes up to 5 litres. I get overhead stirring on all scales. I get vacuum jacketed vessels, which provide excellent temperature control with minimum heat loss, which is a real advantage at low temperatures, and I get the ability to rapidly change out my reactors."

"The first time I changed vessels, it took about 5 minutes but now I can change in less than 2 minutes. That includes removing and attaching the heating fluid hoses. Occasionally I lose a drop or two of heat transfer fluid but most times I lose none. The thing I like about the system is the control and speed. I get better control of my reactions and I can vary my work or scale immediately".

How to order Reactor-Ready...

1. Select the Reactor-Ready core.



2. Choose the vessel kit or kits you require by selecting the vessel volume and style.



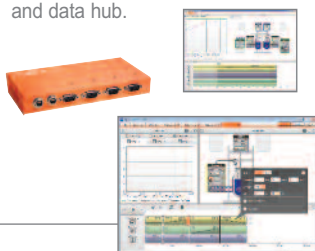
3. Select the overhead stirrer you need.



4. If you need a thermoregulator, hoses, hose adapters, thermofluid or accessory glassware, then select from the accessory list.



5. If you need automation add the AVA Control Software and data hub.



Reactor-Ready in detail

It is the attention to detail and wealth of innovative features that makes Reactor-Ready so much better



Precision ground lid and vessel flanges combine with PTFE collar and FEP-encapsulated O-ring to offer superior sealing performance.

Vessel clamp support allows easy vertical repositioning of the vessel whilst maintaining the stirrer coupling alignment.



Venting stopcock on the outlet manifold allows quick and easy draining of the thermofluid during vessel exchange.

Vessel-to-manifold hoses are supported by the manifolds and frame, eliminating stress on the vessel.

Quick-release PEEK coupling allows rapid exchange of vessels without the use of tools. Operates over the temperature range -70 °C to +230 °C (jacket temperature).

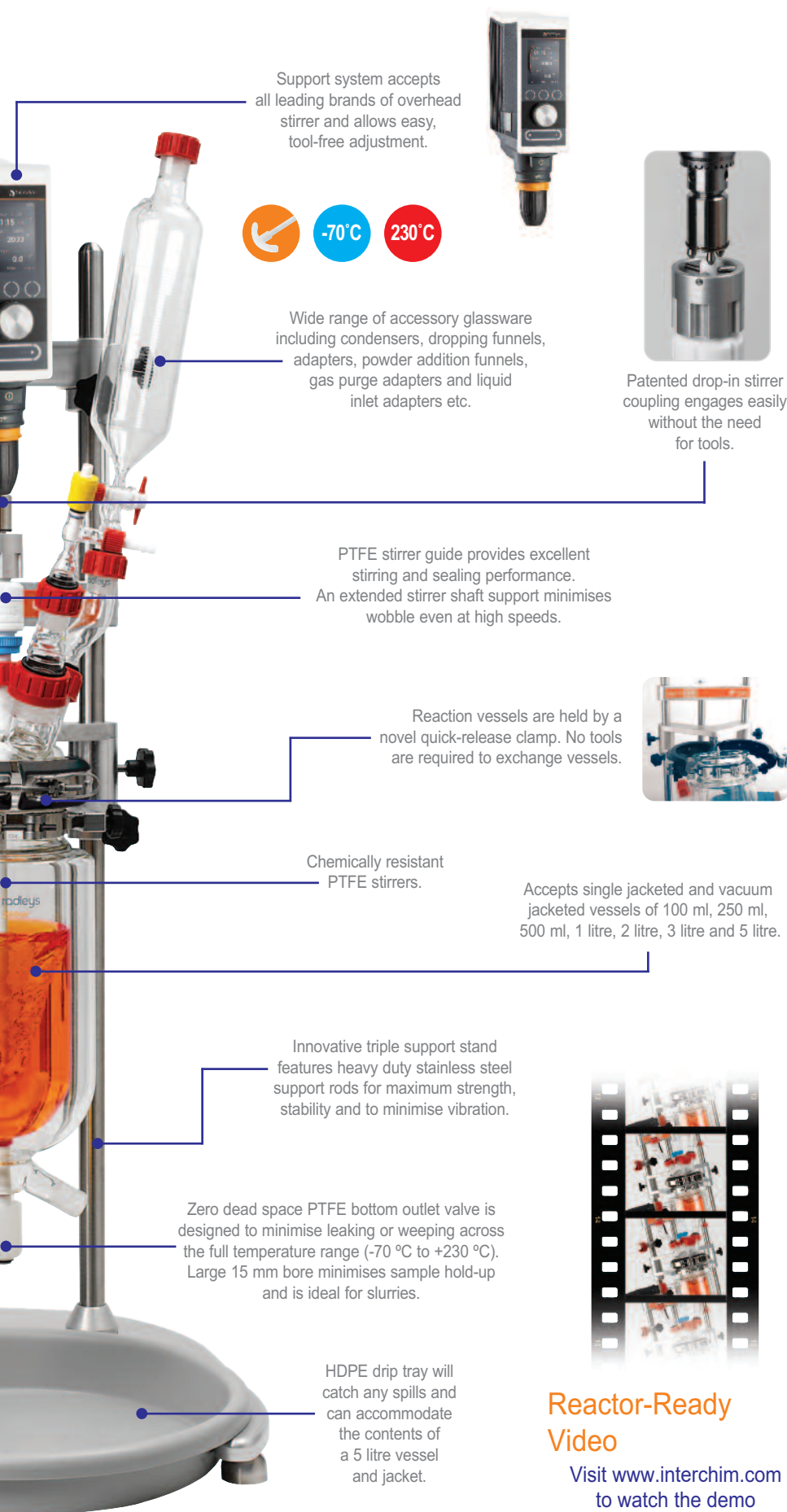


Thermofluid may be drained back to the thermoregulator or decanted via a fluid drain tap on the inlet manifold.

Heavy-duty base plate with levelling feet ensures that the Reactor-Ready support stand is secure and stable.

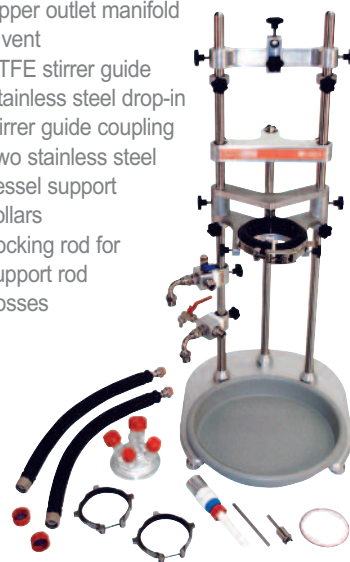
Stirrer support I-beam allows the stirrer motor to be easily raised and lowered.





Reactor-Ready core system includes

- Stand with base, support rods, bosses and all clamps
- Glass reaction vessel lid
- Vessel FEP O-ring seal and PTFE collar
- HDPE drip tray
- Vessel-to-manifold insulated hoses with quick-release connections
- Lower inlet manifold + drain
- Upper outlet manifold + vent
- PTFE stirrer guide
- Stainless steel drop-in stirrer guide coupling
- Two stainless steel vessel support collars
- Locking rod for support rod bosses



Reaction vessel kits make ordering vessels simple and more cost effective

These cost effective vessel kits include the vessel and accessories you need to get started. The Pt100 probe and PTFE stirrer included in each kit are matched to the vessel size. Each vessel kit includes:

- Reaction vessel with PTFE stopcock
- Sidearm couplings
- Pt100 PTFE temperature probe with LEMO connector
- PTFE temperature Probe adapter
- PTFE stirrer



Reactor-Ready Video

Visit www.interchim.com to watch the demo

Reactor-Ready Duo

Supports two glass reaction vessels of different or same volume from 100 ml to 5 litres

Reactor-Ready Duo shares the same unique features as Reactor-Ready, except that it supports two separate jacketed glass reaction vessels. The system can be configured to operate with a single thermoregulator controlling the temperature of both vessels simultaneously, or with two thermoregulators controlling the temperature of each vessel independently.



Unique vessel clamp

- supports two vessels
- change vessels independently
- change vessels in minutes

Vessels

- 100 ml to 5 litres
- combine different volumes
- vacuum jacketed option
- process and standard geometry

Simple stirrer alignment

- set and lock
- independent stirring for each vessel

Patented stirrer coupling

- drop in
- no tools
- no fuss

Hose couplings

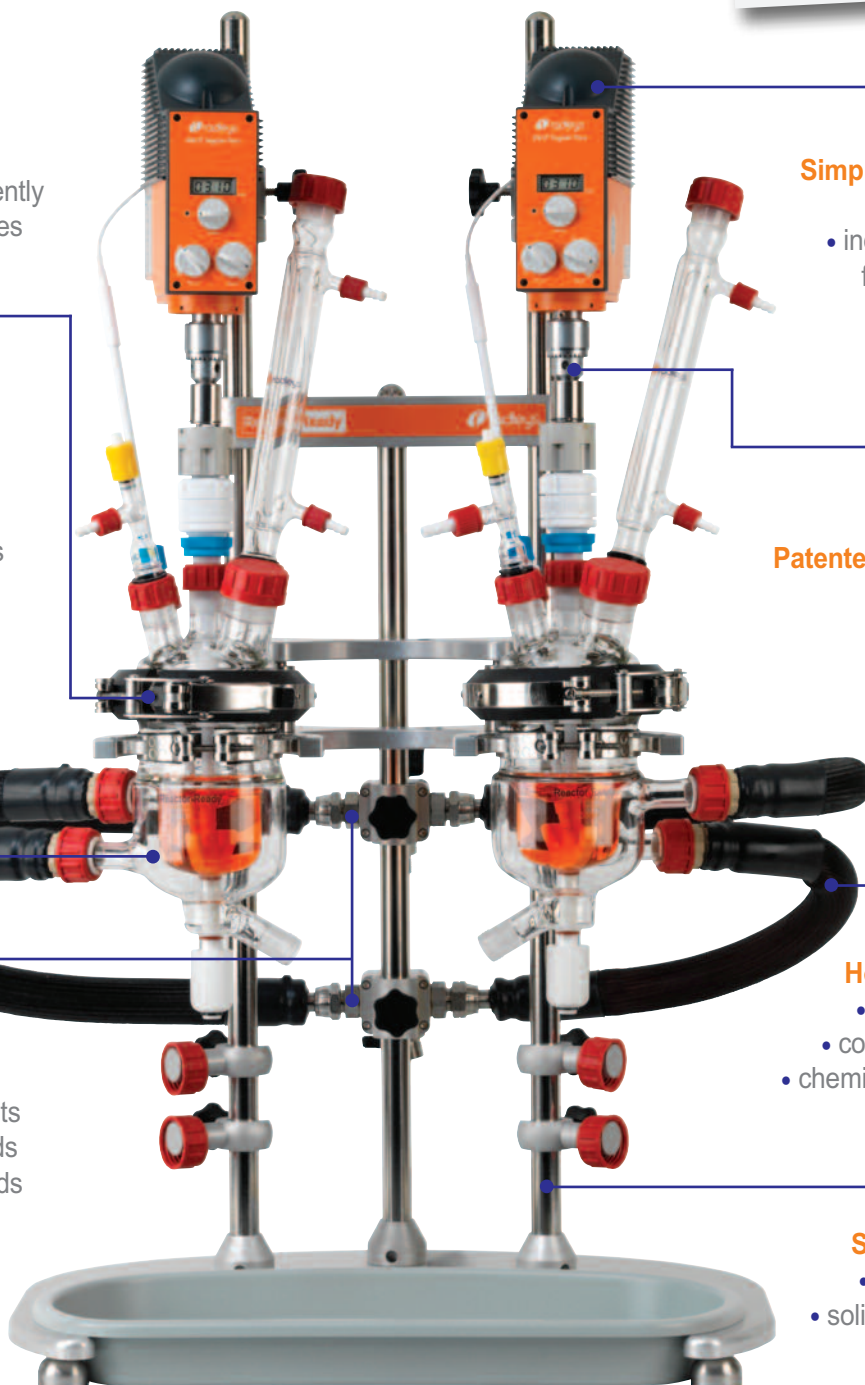
- quick release
- connect in seconds
- chemically resistant PEEK

Strong framework

- heavy duty base
- solid s/steel support rods
- large drip tray

Thermofluid manifolds

- choice of two manifold kits
- single circulator manifolds
- double circulator manifolds



Why Reactor-Ready Duo?

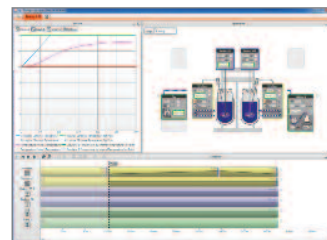
All the benefits of Reactor-Ready with two vessels in parallel or series

Features include

- Rapid exchange of both vessels independently, with quick-release vessel clamp and hose couplings.
- Choice of manifold kits allow two vessels to run from a single thermoregulator or two separate thermoregulators.
- System accepts two overhead stirrers which can be operated and moved independently.

Applications

- Parallel synthesis or reaction optimisation: use the same or different size vessels and vary stirring speed, stirrer shape and temperature between vessels as appropriate.
- Two stage reaction: transfer reactant from one vessel to the other using vacuum or a pump.
- Single reaction vessel: using the second vessel as either a receiving or feed vessel (where reagents can be pre-heated or pre-cooled prior to addition).
- Use optional AVA Software to control fluid transfer between vessels.



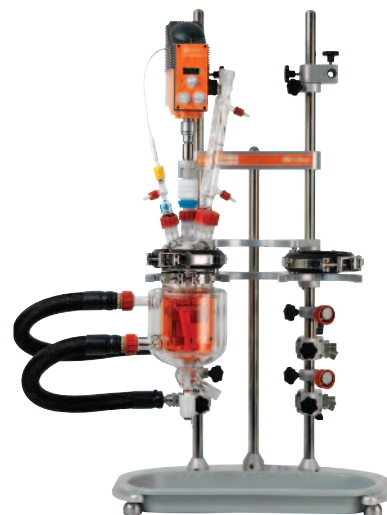
Similar vessels with
double circulator manifold kit



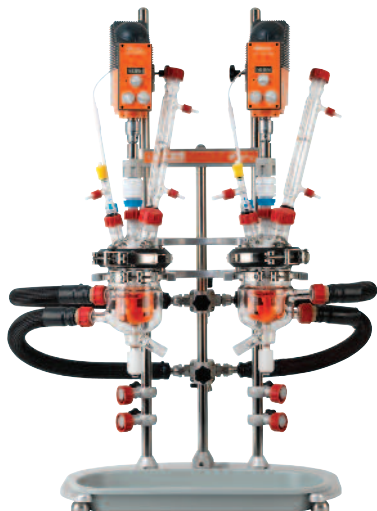
Different vessels with
double circulator manifold kit



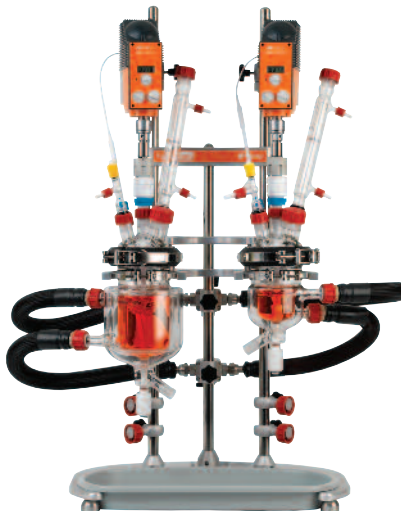
Single vessel with
double circulator manifold kit



Similar vessels with
single circulator manifold Kit



Different vessels with
single circulator manifold Kit



Single vessel with
Single circulator manifold Kit

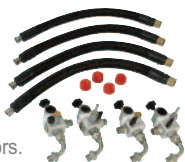


How to order Reactor-Ready Duo...

1. Select the Reactor-Ready Duo core.



2. Choose manifold & hose kit for one or two circulators.



3. Choose the vessel kits you need.



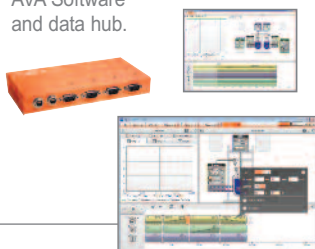
4. Select the overhead stirrers.



5. If you need a thermoregulator, hoses, hose adapters, thermofluid or accessory glassware, then select from the accessory list.



6. If you need automation, add the AVA Software and data hub.



Reactor-Ready Duo core system

Easy-to-order Reactor-Ready Duo core system includes all the framework components required for operation

Features include

- Robust heavy-duty framework features solid stainless steel support rods.
- Two separate quick release clamps support each of the vessels independently.
- Large drip tray will retain vessel contents.
- Manifold and hose kits must be ordered separately.

Core system (RR121300) includes

- Stand with base, support rods, bosses and all clamps
- 2 x glass reaction vessel lids
- 2 x vessel FEP O-ring seals and PTFE centering collars
- 2 x PTFE stirrer guides and couplings
- HDPE drip tray
- 2 x stainless steel stirrer drop-in couplings
- 2 x stainless steel vessel support collars
- locking rod for support rod bosses



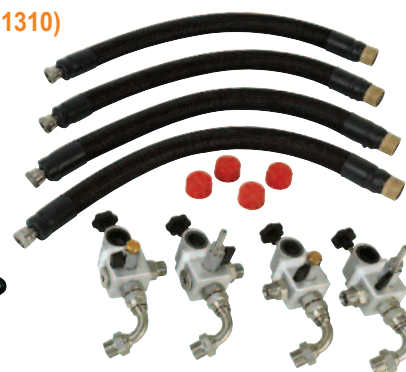
Reactor-Ready Duo manifolds and hoses

A choice of manifold kits for use with one or two thermoregulators

Double thermoregulator manifold and hose kit (RR121310)

This double thermoregulator kit is designed to work with two separate thermoregulators controlling the temperature of each vessel independently. With this set-up both vessels can operate at different temperatures. This is the recommended kit.

- R/H upper return manifold with vent valve
- L/H upper return manifold with vent valve
- R/H lower supply manifold with drain valve
- L/H lower supply manifold with drain valve
- 4 x quick-release insulated hoses, 60 cm
- 4 x sealing caps for hoses



Single circulator manifold and hose kit (RR121305)

This single circulator kit is designed to work with one thermoregulator controlling the temperature of both vessels simultaneously. With this set-up both vessels would operate at the same temperature. The manifolds are supplied with blanking plugs should you wish to run only one vessel.

- central upper return manifold with vent valve
- central lower supply manifold with drain valve
- 4 x quick-release insulated hoses, 70 cm
- 4 x sealing caps for hoses
- 2 x stainless steel blanking plugs



Hei-Torque overhead stirrers

The powerful Hei-Torque range can accomplish the most demanding mixing tasks whilst providing the highest safety

Includes
3 YEAR
warranty



Stirrer models include

- Powerful stirring from 10 to 2000 rpm (Max. recommended speed with Reactor-Ready is 500 rpm).
- Available with basic (Value) or advanced (Precision) features, and a choice of up to 40, 200 or 400 Ncm torque.
- Intuitive control panel for easy operation, safe start and stop to avoid accidental start-up.
- **New** features for Precision range: set speed limit, adjustable acceleration, set a torque limit.
- **New** unique Quick-chuck for immediate and convenient 'one-hand' impellor changes, without tools.

| | Hei-Torque Core | Hei-Torque Value 200 | Hei-Torque Value 400 | Hei-Torque Precision 200 | Hei-Torque Precision 400 |
|--|-----------------------|-------------------------|---------------------------|--------------------------|---------------------------|
| Power rating, motor input/output (W) | 105/75 | 120/80 | 150/90 | 120/80 | 150/90 |
| Number of gears | 1 | 1 | 2 | 1 | 2 |
| Speed range (rpm) | 20 to 2000 | 10 to 2000 | 10 to 400 and 200 to 2000 | 10 to 2000 | 10 to 400 and 200 to 2000 |
| Speed indicator | digital monochrome 2" | digital monochrome 2.4" | digital monochrome 2.4" | digital colour 3.2" | digital colour 3.2" |
| Speed control | electronic | electronic | electronic | electronic | electronic |
| Torque, maximum (Ncm) | 40 | 200 | 400 | 200 | 400 |
| Torque indicator (Ncm) | symbol | symbol | symbol | precise value | precise value |
| Overheat protection | automatic cut-out | automatic cut-out | automatic cut-out | automatic cut-out | automatic cut-out |
| Viscosity up to (mPa s) | 10,000 | 100,000 | 250,000 | 100,000 | 250,000 |
| Stirring cap. H ₂ O max. (L) | 25 | 50 | 100 | 50 | 100 |
| Shaft diameter, max. (mm) | 10.5 | 10.5 | 10.5 | 10.5 | 10.5 |
| Dimensions (W x H x D) (mm) | 70 x 281.5 x 195 | 86 x 350 x 247 | 93 x 350 x 247 | 86 x 350 x 247 | 93 x 350 x 247 |
| Weight (kg) | 2.3 | 5.1 | 5.3 | 5.1 | 5.3 |
| Set speed limit, Torque limit, Adjustable acceleration | - | - | - | Yes | Yes |
| Analogue/digital interface | - | - | - | USB and RS232 | USB and RS232 |

For Reactor-Ready and Reactor-Ready Duo the maximum speed is 500 rpm for continuous use for 800 rpm for short periods.

Thermoregulators/circulators

Which thermoregulator should you choose?

- Radleys are a Huber distribution and service partner, so we recommend the Huber range of thermoregulators, circulators, chillers and waterbaths. However, Reactor-Ready is compatible with all leading brands of thermoregulator including Julabo, Lauda, Polyscience, Haake and many others.
- Also available are a range of hoses, adapters, temperature probes and thermofluid for all applications.

| Description | Temperature range °C | Heating power (kW) | Cooling power at 0 °C (kW) | Application Examples | |
|---------------------|----------------------|--------------------|----------------------------|----------------------|---|
| Huber Ministat 230 | -45 °C to 200 °C | 2.0 | 0.38 | 250 ml | Cool to -10 °C in <1 hr, then heat to 130 °C in <30 mins |
| | | | | 1 Litre | Control at 0 °C, then heat to 100 °C in 20 mins |
| Huber Petite Fleur | -40 °C to 200 °C | 1.5 | 0.45 | 500 ml | Cool to -20 °C in approx 30 mins, then heat to 150 °C in <30 mins |
| | | | | 1 Litre | Heat to 150 °C, then cool to 0 °C at > 2.5 K/min |
| Huber Unistat Tango | -45 °C to 250 °C | 3.0 | 0.7 | 1 Litre | Cool to -30 °C in <1 hr, then heat to 180 °C in <1 hr |
| | | | | 2 Litre | Heat to 180 °C, then cool to 20 °C in approx 1 hr |
| Huber Unistat 405 | -45 °C to 250 °C | 3.0 | 1.0 | 2 Litre | Cool to -20 °C in <30 mins, then heat to 100 °C in <30 mins |
| | | | | 5 Litre | Control at 20 °C, then cool to -20 °C in approx 70 mins |
| Huber Unistat 705 | -75 °C to 250 °C | 3.0 | 0.65 | 1 Litre | Control at 20 °C, then cool to -50 °C in 40 mins |
| | | | | 5 Litre | Cool to -40 °C at approx 1 K/min, then heat to 150 °C in <1 hr |

The above applications are intended as a guide to the relative performance of each Huber thermoregulator with a range of vessel sizes and are not a prediction of actual performance. To achieve optimum performance the use of vacuum jacketed vessels is recommended for below ambient temperature applications. For comprehensive advice on thermoregulator selection please contact your local Radleys distributor.



Huber Unistat 405



Huber Petite Fleur - Baby Tango

Reaction vessels

Single jacketed, vacuum jacketed and process styles

Features include

- Precision engineered borosilicate glass vessels can be used with Reactor-Ready and Reactor-Ready Duo.
- DN100 ground and polished flat flange combines with the FEP-encapsulated O-ring and our unique self centering PTFE collar to offer a leak-tight seal between the vessel and lid.
- Convenient and cost-effective vessel kits include stirrer, temperature probe and adapter.

Vessels feature zero dead space PTFE bottom outlet valve

- Exclusive stopcock design prevents over-tightening that can cause glass breakage.
- Piston design allows quick and safe removal, eliminating the cleaning and assembly problems associated with other stopcock styles.
- Glass-filled PTFE piston minimises leaking or weeping across the full temperature range (-70 °C to +230 °C)
- Interchangeable between vessels with a full range of replacement parts and FEP O-rings.
- The large 15 mm bore minimises sample hold-up and is ideal for slurries (25 mm available on request).

Glass vessel lids

- DN100 5 neck glass lid fits all vessel sizes.
- DN100 lid with 5 x Rodaviss, grease-free, safety joints. B24 centre, B34, B29, B24 and B19 side joints.
- Rodaviss glass sockets will accept any glassware with traditional A, B or C length conical cones.

PTFE vessel lids

- DN100 7 neck PTFE lids fit all vessel sizes.
- More robust and less likely to break than glass.
- Ideal for use with analytical probes.
- Lids accept a range of removable Rodaviss sockets and compression fittings.
- Rodaviss PTFE sockets will accept any glassware with traditional A, B or C length conical cones.



Standard Vessels

250 ml single jacketed vessel



250 ml vacuum Jacketed vessel



500 ml single jacketed vessel



500 ml vacuum jacketed vessel



1000 ml single jacketed vessel



1000 ml vacuum jacketed vessel



2000 ml single jacketed vessel



2000 ml vacuum jacketed vessel



5000 ml single jacketed vessel



5000 ml vacuum jacketed vessel



Process Vessels - mimic the geometry of plant scale reactors

Feature a 1.25 to 1 ratio of internal height to internal diameter, with dish-shaped bottom.

100 ml single jacketed process vessel



100 ml vacuum jacketed process vessel



250 ml single jacketed process vessel



250 ml vacuum jacketed process vessel



500 ml single jacketed process vessel



500 ml vacuum jacketed process vessel



1000 ml single jacketed process vessel



1000 ml vacuum jacketed process vessel



2000 ml single jacketed process vessel



2000 ml vacuum jacketed process vessel



5000 ml single jacketed process vessel



5000 ml vacuum jacketed process vessel



Note: 3 litre vessels not shown

Reaction vessel kits

Reaction vessel kits make ordering vessels and accessories simple and much more cost effective

Standard reaction vessel kits

These cost effective vessel kits include the vessel and accessories you need to get started. The Pt100 probe and anchor stirrer included in each kit are matched to the vessel size. Each vessel kit includes:

- Reaction vessel
- PTFE anchor stirrer
- Sidearm couplings
- Pt100 PTFE temperature probe with LEMO Connector
- PTFE temperature Probe adapter



Process reaction vessel kits

Process vessel kits include a Pt100 temperature probe and turbine stirrer matched to the vessel size. Each vessel kit includes:

- Reaction vessel
- PTFE turbine stirrer
- Sidearm couplings
- Pt100 PTFE temperature probe with LEMO connector
- PTFE temperature probe adapter



Glassware and accessories

Wide choice of standard glassware to suit your application

Glassware features Rodaviss joints and is compatible with Reactor-Ready lids



Boss head

3 Pronged clamp



Condenser liebig, B29



Condenser double surface, B29



Condenser jacket coil, B29



Dropping funnel equalising arm, B24



PTFE hose adapter, B19



Liquid additions adapter, B24



Glass cone stopper, B29



Reducing adapter, B29



Right angle adapter, B29



Enlarging adapter, B29



Reflux divider head B29 + GL18 + PTFE fitting



Reflux divider head B29 + GL18 + temp-probe port B14



Valved liquid inlet adapter, B24



Gas purge adapter, B24



Oil bubbler, B24



Solid additions Funnel, B34



Swan neck Adapter, B24

Other styles and sizes of glassware are available, please see full listing.

How to order Reactor-Ready

1. Select the Reactor-Ready core: RR121000.
2. Choose the vessel kit or kits you require by selecting the vessel volume and style.
3. Select the overhead stirrer you require.
4. If you need a thermoregulator, hoses, hose adapters, thermofluid or accessory glassware, then select from the accessory list opposite.
5. If you need automation, add the AVA Software and Data Hub.

Reactor-Ready core system

- RR121000 Reactor-Ready core system includes:
- Stand with base, drip tray, support rods, bosses and all clamps
 - Vessel to framework insulated hoses with quick-release connections
 - Upper and lower drain-down manifolds
 - PTFE stirrer guide and drop-in coupling
 - Glass reaction vessel lid with Rodaviss sealing caps
 - Vessel FEP O-ring seal and PTFE centering collar
 - 2 x Stainless steel vessel support collars

Important: Hoses to connect the Reactor-Ready framework to your thermoregulator are NOT included. You will require hoses with an M24x1.5 female connection or appropriate adapters. See opposite for hoses, adapters and suitable thermoregulators.

Standard Reaction Vessel Kits

Kits include: standard vessel, PTFE anchor stirrer paddle, PTFE Pt100 temp probe (with LEMO plug for connection to the thermoregulator) and PTFE temp probe adapter.

| | |
|----------|-----------------------------------|
| RR120010 | 250ml Single Jacketed Vessel Kit |
| RR120015 | 250ml Vacuum Jacketed Vessel Kit |
| RR120020 | 500ml Single Jacketed Vessel Kit |
| RR120025 | 500ml Vacuum Jacketed Vessel Kit |
| RR120030 | 1000ml Single Jacketed Vessel Kit |
| RR120035 | 1000ml Vacuum Jacketed Vessel Kit |
| RR120040 | 2000ml Single Jacketed Vessel Kit |
| RR120045 | 2000ml Vacuum Jacketed Vessel Kit |
| RR120042 | 3000ml Single Jacketed Vessel Kit |
| RR120047 | 3000ml Vacuum Jacketed Vessel Kit |
| RR120050 | 5000ml Single Jacketed Vessel Kit |
| RR120055 | 5000ml Vacuum Jacketed Vessel Kit |



Kit includes
Anchor Stirrer

Process Reaction Vessel Kits

Kits include: process vessel, PTFE turbine stirrer paddle, PTFE Pt100 temp probe (with LEMO plug for connection to the thermoregulator) and PTFE temp probe adapter.

| | |
|----------|---|
| RR120105 | 100ml Single Jacketed Process Vessel Kit |
| RR120107 | 100ml Vacuum Jacketed Process Vessel Kit |
| RR120110 | 250ml Single Jacketed Process Vessel Kit |
| RR120115 | 250ml Vacuum Jacketed Process Vessel Kit |
| RR120120 | 500ml Single Jacketed Process Vessel Kit |
| RR120125 | 500ml Vacuum Jacketed Process Vessel Kit |
| RR120130 | 1000ml Single Jacketed Process Vessel Kit |
| RR120135 | 1000ml Vacuum Jacketed Process Vessel Kit |
| RR120140 | 2000ml Single Jacketed Process Vessel Kit |
| RR120145 | 2000ml Vacuum Jacketed Process Vessel Kit |
| RR120142 | 3000ml Single Jacketed Process Vessel Kit |
| RR120147 | 3000ml Vacuum Jacketed Process Vessel Kit |
| RR120150 | 5000ml Single Jacketed Process Vessel Kit |
| RR120155 | 5000ml Vacuum Jacketed Process Vessel Kit |



Kit includes
Turbine Stirrer

How to order Reactor-Ready Duo

1. Select the Reactor-Ready Duo core: RR121300.
2. Choose manifold and hose kit for one or two circulators.
3. Choose the vessel kit or kits you require by selecting the vessel volume and style.
4. Select the overhead stirrers you require.
5. If you need a thermoregulator, hoses, hose adapters, thermofluid or accessory glassware, then select from the accessory list opposite.
6. If you need automation, add the AVA Control Software and Data Hub.

Reactor-Ready Duo core system

- RR121300 Reactor-Ready Duo core system includes:
- Duo stand with base, drip tray, support rods, bosses and all clamps
 - 2 x PTFE stirrer guides and drop-in couplings
 - 2 x Glass reaction vessel lids with Rodaviss sealing caps
 - 2 x Vessel FEP O-ring seal and PTFE centering collars
 - 2 x Stainless steel vessel support collars

Important: Hoses to connect the Reactor-Ready Duo framework to your thermoregulator are NOT included. You will require hoses with an M24x1.5 female connection or appropriate adapters. See opposite for hoses, adapters and suitable thermoregulators.

Double Circulator Manifold and Hose Kit

- RR121310 Double Circulator Manifold and Hose Kit includes:
- R/H Upper Return Manifold with Vent Valve
 - L/H Upper Return Manifold with Vent Valve
 - R/H Lower Supply Manifold with Drain Valve
 - L/H Lower Supply Manifold with Drain Valve
 - 4 x Quick-Release Insulated Hoses, 60cm
 - 4 x Sealing Caps for Hoses

Single Circulator Manifold and Hose Kit

- RR121305 Single Circulator Manifold and Hose Kit includes:
- Central Upper Return Manifold with Vent Valve
 - Central Lower Supply Manifold with Drain Valve
 - 4 x Quick-Release Insulated Hoses, 70cm
 - 4 x Sealing Caps for Hoses
 - 4 x Stainless Steel Blanking Plugs

Hei-Torque Overhead Stirrers

| | |
|--------------|--------------------------------------|
| 501-60410-00 | Hei-Torque Core |
| 501-62010-00 | Hei-Torque 200 Value |
| 501-62020-00 | Hei-Torque 200 Precision (USB/RS232) |
| 501-64010-00 | Hei-Torque 400 Value |
| 501-64020-00 | Hei-Torque 400 Precision (USB/RS232) |

General Maintenance Accessories

| | |
|----------|---|
| RR121150 | Reactor-Ready Maintenance Kit (includes items listed below) |
| RR121027 | Oil Wipe for Support Rods, Pack 10 |
| RR121063 | Stirrer Guide Bearing Seal B24 10mm |
| RR121064 | Stirrer Guide Ferrule and Shaft Seal B24 10mm |
| RR121071 | 23mm Viton O-Rings for Quick Release Hose Coupling, Pack 2 |
| RR121072 | 28mm Viton O-Rings for Quick Release Hose Coupling, Pack 2 |
| RR121090 | FEP Encapsulated Silicone Vessel O-Ring |
| RR166100 | Replacement 15mm Piston Top O-Ring |
| RR166102 | Replacement 15mm Piston Middle O-Ring |

Reactor-Ready Duo reaction vessel compatibility guide

The following combinations of reaction vessel sizes can be used in the Reactor-Ready Duo.

| | 100ml | 250 ml | 500 ml | 1000 ml | 2000 ml | 3000 ml | 5000 ml |
|---|-------|--------|--------|---------|---------|---------|---------|
| Standard Vessel, Single Jacketed | | | | | | | |
| 250 ml | n/a | ● | ● | ● | ● | ● | ● |
| 500 ml | n/a | ● | ● | ● | ● | ● | ● |
| 1000 ml | n/a | ● | ● | ● | ● | ● | ● |
| 2000 ml | n/a | ● | ● | ● | ● | ● | ● |
| 5000 ml | n/a | ● | ● | ● | ● | ● | ● |
| Process Vessel, Single Jacketed | | | | | | | |
| 100 ml | ● | ● | ● | ● | ● | ● | ● |
| 250 ml | ● | ● | ● | ● | ● | ● | ● |
| 500 ml | ● | ● | ● | ● | ● | ● | ● |
| 1000 ml | ● | ● | ● | ● | ● | ● | ● |
| 2000 ml | ● | ● | ● | ● | ● | ● | ● |
| 3000 ml | ● | ● | ● | ● | ● | ● | ● |
| 5000 ml | ● | ● | ● | ● | ● | n/a | n/a |

| | 100ml | 250 ml | 500 ml | 1000 ml | 2000 ml | 3000 ml | 5000 ml |
|---|-------|--------|--------|---------|---------|---------|---------|
| Standard Vessel, Vacuum Jacketed | | | | | | | |
| 250 ml | n/a | ● | ● | ● | ● | ● | ● |
| 500 ml | n/a | ● | ● | ● | ● | ● | ● |
| 1000 ml | n/a | ● | ● | ● | ● | ● | ● |
| 2000 ml | n/a | ● | ● | ● | ● | ● | ● |
| 5000 ml | n/a | ● | ● | ● | ● | n/a | n/a |
| Process Vessel, Vacuum Jacketed | | | | | | | |
| 100 ml | ● | ● | ● | ● | ● | ● | ● |
| 250 ml | ● | ● | ● | ● | ● | ● | ● |
| 500 ml | ● | ● | ● | ● | ● | ● | ● |
| 1000 ml | ● | ● | ● | ● | ● | n/a | n/a |
| 2000 ml | ● | ● | ● | ● | ● | n/a | n/a |
| 3000 ml | ● | ● | ● | ● | ● | ● | ● |
| 5000 ml | ● | ● | ● | n/a | n/a | n/a | n/a |

Huber Thermoregulators (Circulators)

| | |
|------------------|---|
| HB2016.0005.01 | Ministat 240 Pilot ONE Controller |
| HB1030.0001.01 | Petite Fleur Pilot ONE Controller |
| HB1030.0001.01ET | Petite Fleur with 4 Litre Expansion Tank |
| HB1000.0037.01 | Unistat Tango Pilot ONE Controller |
| HB1002.0045.01 | Unistat 405 Pilot ONE Controller |
| HB1001.0041.01 | Unistat 705 Pilot ONE Controller (230V or 400V) |

Thermoregulator Hoses, Adapters and Thermofluid

Insulated Hose with PTFE Inner

| | | |
|--------|-----------------------------------|-----------------|
| HB9325 | M24x1.5 Insulated Hose NW12 100cm | -60°C to +260°C |
| HB9326 | M24x1.5 Insulated Hose NW12 150cm | -60°C to +260°C |
| HB9327 | M24x1.5 Insulated Hose NW12 200cm | -60°C to +260°C |
| HB9328 | M24x1.5 Insulated Hose NW12 300cm | -60°C to +260°C |

Insulated Hose with Metal Inner

| | | |
|--------|-----------------------------------|------------------|
| HB9274 | M24x1.5 Insulated Hose NW12 100cm | -100°C to +350°C |
| HB9275 | M24x1.5 Insulated Hose NW12 150cm | -100°C to +350°C |
| HB9276 | M24x1.5 Insulated Hose NW12 200cm | -100°C to +350°C |
| HB9277 | M24x1.5 Insulated Hose NW12 300cm | -100°C to +350°C |

Adapters

| | |
|---------|--|
| HB6724 | M24x1.5 Female to M16x1 Male Adapter |
| HB6945 | M24x1.5 Male to M16x1 Female Adapter |
| HB6723 | M24x1.5 Female to M30x1.5 Male Adapter |
| HB6195 | M16x1 90° Adapter |
| HB9256 | M24x1.5 90° Adapter |
| HB6089 | M16x1 Nut |
| HB12634 | M24x1.5 Nut |
| HB6086 | M16x1 Hose Connector NW8 |
| HB9471 | M24x1.5 Hose Connector NW12 |
| HB6091 | M16x1 Isolating Ball Valve -20°C...+140°C (max. 6 bar at +140°C) |
| HB9236 | M24x1.5 Isolating Ball Valve -10°C...+180°C (max. 6 bar at +180°C) |

Thermofluid

| | | |
|--------|---------------------------------|---------------------------------|
| HB6161 | SilOil M20.195/235.20, 5 Litre | -20°C to +195°C/235°C |
| HB6162 | SilOil M20.195/235.20, 10 Litre | -20°C to +195°C/235°C |
| HB6163 | SilOil M40.165/220.10, 5 Litre | -40°C to +165°C/220°C |
| HB6164 | SilOil M40.165/220.10, 10 Litre | -40°C to +165°C/220°C |
| HB6165 | SilOil M60.115/200.05, 5 Litre | -60°C to +115°C/200°C |
| HB6166 | SilOil M60.115/200.05, 10 Litre | -60°C to +115°C/200°C |
| HB6479 | DW-Therm M90.200.02, 10 Litre | -90°C to +200°C (Unistats only) |

Glassware Accessories

| | |
|----------|--|
| RR139005 | Condenser Liebig 250mm B29 + GL14 + fittings |
| RR139007 | Condenser Double Surface 200mm B29 + GL14 + fittings |
| RR139009 | Condenser Jacket Coil Rodaviss B29 + GL14 + fittings |
| RR139011 | Right Angle Adapter B29 + GL14 + PTFE fittings |
| RR139013 | 50ml Graduated Dropping Funnel Equalising Arm B24 |
| RR139015 | 100ml Graduated Dropping Funnel Equalising Arm B24 |
| RR139017 | 250ml Graduated Dropping Funnel Equalising Arm B24 |
| RR139019 | 500ml Graduated Dropping Funnel Equalising Arm B24 |
| RR139021 | 1000ml Graduated Dropping Funnel Equalising Arm B24 |
| RR139023 | Swan Neck Adapter Angled B24 to Vertical B24 |
| RR139025 | Gas Purge Adapter B24 + GL14 + fittings |
| RR139027 | Glass Cone Stopper B19 |
| RR139029 | Glass Cone Stopper B24 |
| RR139031 | Glass Cone Stopper B29 |
| RR139033 | Glass Cone Stopper B34 |
| RR139035 | Enlarging Adapter B24 to B29 |
| RR139037 | Enlarging Adapter B29 to B34 |
| RR139039 | Reducing Adapter B24 to B19 |
| RR139041 | Reducing Adapter B29 to B19 |
| RR139043 | Reducing Adapter B29 to B24 |
| RR139045 | Reducing Adapter B34 to B19 |
| RR139047 | Reducing Adapter B34 to B24 |
| RR139049 | Reducing Adapter B34 to B29 |
| RR139051 | Oil Bubbler Type 1 B24 + GL14 + fittings |
| RR139053 | Solid Additions Funnel B34 (with extended tube) |
| RR139057 | Valved Liquid Inlet Adapter B24 to GL14 |
| RR139063 | PTFE Hose Adapter B19 for 12mm ID Tubing |
| RR139067 | Boss Head |
| RR139069 | 3-Prong Clamp |
| RR139079 | PTFE Flexible Bellows B24 |
| RR139081 | PTFE Flexible Bellows B29 |
| RR139083 | PTFE Flexible Bellows B34 |
| RR139150 | Reflux Divider Head B29 + GL18 + PTFE Fitting |
| RR139152 | Reflux Divider Head B29 + GL18 + Temp Probe Port B14 |
| RR139190 | Reflux Divider Kit |
| RR139192 | Reflux Divider Kit with Vapour Temp Kit |
| RR139154 | 250ml Receiver Flask 2 x B24 Socket, + B24 Cone and Tap |
| RR139324 | 500ml Receiver Flask 3 x B24 Socket, + B24 Cone and Tap |
| RR139326 | 1000ml Receiver Flask 3 x B24 Socket, + B24 Cone and Tap |

PTFE Pt100 Temperature Probes and Adapters

| | |
|----------|--|
| RR140250 | Probe 8mm with LEMO Plug - 100ml, 250ml + 500ml Vessels |
| RR141000 | Probe 9mm with LEMO Plug - 1000ml, 2000ml + 3000ml Vessels |
| RR145000 | Probe 9mm with LEMO Plug - 5000ml Vessel |
| RR140010 | PTFE Temperature Probe Adapter - 8mm |
| RR140015 | PTFE Temperature Probe Adapter - 9mm |

Reaction Vessel Support Collar

| | |
|----------|-----------------------|
| RR121048 | Vessel Support Collar |
|----------|-----------------------|

Glass DN100 Vessel Lid

| | |
|----------|---|
| RR136000 | 5 Neck Glass Lid - 1 x B19, 2 x B24, 1 x B29, 1 x B34 Includes Rodaviss sealing caps |
|----------|---|

PTFE DN100 Vessel Lids

| | |
|----------|--|
| RR136100 | 5 Neck PTFE Lid with 2 Blanked Ports. 1 x B19, 2 x B24, 1 x B29, 1 x B34 Includes Rodaviss sealing caps |
| RR136110 | 7 Neck PTFE Lid with 7 Threaded Ports. 2 x ¼" NPT, 5 x ¾" NPT PTFE inserts not included - select from below |

PTFE Rodaviss Sockets, Compression Fittings and Blanking Plugs for PTFE Lids

| | |
|----------|--------------------------------------|
| RR136300 | Rodaviss B19 Socket Adapter (¾" NPT) |
| RR136301 | Rodaviss B24 Socket Adapter (¾" NPT) |
| RR136302 | Rodaviss B29 Socket Adapter (¾" NPT) |
| RR136303 | Rodaviss B34 Socket Adapter (¾" NPT) |
| RR136304 | Rodaviss B45 Socket Adapter (¾" NPT) |
| RR136314 | 3mm Bore Compression Fitting ¼" NPT |
| RR136315 | 6mm Bore Compression Fitting ¼" NPT |
| RR136316 | 8mm Bore Compression Fitting ¼" NPT |
| RR136317 | 12mm Bore Compression Fitting ¼" NPT |
| RR136318 | 14mm Bore Compression Fitting ¼" NPT |
| RR136319 | 16mm Bore Compression Fitting ¼" NPT |
| RR136320 | 19mm Bore Compression Fitting ¼" NPT |
| RR136327 | PTFE Blanking Plug ¼" NPT |
| RR136328 | PTFE Blanking Plug ¾" NPT |

Standard Reaction Vessels Only

| | |
|----------|-------------------------------|
| RR130250 | 250ml Single Jacketed Vessel |
| RR130255 | 250ml Vacuum Jacketed Vessel |
| RR130500 | 500ml Single Jacketed Vessel |
| RR130550 | 500ml Vacuum Jacketed Vessel |
| RR131000 | 1000ml Single Jacketed Vessel |
| RR131050 | 1000ml Vacuum Jacketed Vessel |
| RR132000 | 2000ml Single Jacketed Vessel |
| RR132050 | 2000ml Vacuum Jacketed Vessel |
| RR133000 | 3000ml Single Jacketed Vessel |
| RR133050 | 3000ml Vacuum Jacketed Vessel |
| RR135000 | 5000ml Single Jacketed Vessel |
| RR135050 | 5000ml Vacuum Jacketed Vessel |

PTFE Stirrer Shafts (for Standard Vessels)

| | |
|----------|---|
| RR150250 | Anchor PTFE Stirrer Shaft - 250ml vessels |
| RR150255 | Retreat Curve PTFE Stirrer Shaft - 250ml vessels |
| RR150260 | Turbine PTFE Stirrer Shaft - 250ml vessels |
| RR150500 | Anchor PTFE Stirrer Shaft - 500ml vessels |
| RR150505 | Retreat Curve PTFE Stirrer Shaft - 500ml vessels |
| RR150510 | Turbine PTFE Stirrer Shaft - 500ml vessels |
| RR151000 | Anchor PTFE Stirrer Shaft - 1000ml vessels |
| RR151005 | Retreat Curve PTFE Stirrer Shaft - 1000ml vessels |
| RR151010 | Turbine PTFE Stirrer Shaft - 1000ml vessels |
| RR152000 | Anchor PTFE Stirrer Shaft - 2000ml vessels |
| RR152005 | Retreat Curve PTFE Stirrer Shaft - 2000ml vessels |
| RR152010 | Turbine PTFE Stirrer Shaft - 2000ml vessels |
| RR153000 | Anchor PTFE Stirrer Shaft - 3000ml vessels |
| RR153005 | Retreat Curve PTFE Stirrer Shaft - 3000ml vessels |
| RR153010 | Turbine PTFE Stirrer Shaft - 3000ml vessels |
| RR155000 | Anchor PTFE Stirrer Shaft - 5000ml vessels |
| RR155005 | Retreat Curve PTFE Stirrer Shaft - 5000ml vessels |
| RR155010 | Turbine PTFE Stirrer Shaft - 5000ml vessels |

Process Reaction Vessels Only

| | |
|----------|---------------------------------------|
| RR130102 | 100ml Single Jacketed Process Vessel |
| RR130152 | 100ml Vacuum Jacketed Process Vessel |
| RR130252 | 250ml Single Jacketed Process Vessel |
| RR130257 | 250ml Vacuum Jacketed Process Vessel |
| RR130502 | 500ml Single Jacketed Process Vessel |
| RR130552 | 500ml Vacuum Jacketed Process Vessel |
| RR131002 | 1000ml Single Jacketed Process Vessel |
| RR131052 | 1000ml Vacuum Jacketed Process Vessel |
| RR132002 | 2000ml Single Jacketed Process Vessel |
| RR132052 | 2000ml Vacuum Jacketed Process Vessel |
| RR133002 | 3000ml Single Jacketed Process Vessel |
| RR133052 | 3000ml Vacuum Jacketed Process Vessel |
| RR135002 | 5000ml Single Jacketed Process Vessel |
| RR135052 | 5000ml Vacuum Jacketed Process Vessel |

PTFE Stirrer Shafts (for Process Vessels)

| | |
|----------|---|
| RR150102 | Anchor PTFE Stirrer Shaft - 100ml Process Vessels |
| RR150107 | Retreat Curve PTFE Stirrer Shaft - 100ml Process Vessels |
| RR150112 | Turbine PTFE Stirrer Shaft - 100ml Process Vessels |
| RR150252 | Anchor PTFE Stirrer Shaft - 250ml Process Vessels |
| RR150257 | Retreat Curve PTFE Stirrer Shaft - 250ml Process Vessels |
| RR150262 | Turbine PTFE Stirrer Shaft - 250ml Process Vessels |
| RR150502 | Anchor PTFE Stirrer Shaft - 500ml Process Vessels |
| RR150507 | Retreat Curve PTFE Stirrer Shaft - 500ml Process Vessels |
| RR150512 | Turbine PTFE Stirrer Shaft - 500ml Process Vessels |
| RR151002 | Anchor PTFE Stirrer Shaft - 1000ml Process Vessels |
| RR151007 | Retreat Curve PTFE Stirrer Shaft - 1000ml Process Vessels |
| RR151012 | Turbine PTFE Stirrer Shaft - 1000ml Process Vessels |
| RR152002 | Anchor PTFE Stirrer Shaft - 2000ml Process Vessels |
| RR152007 | Retreat Curve PTFE Stirrer Shaft - 2000ml Process Vessels |
| RR152012 | Turbine PTFE Stirrer Shaft - 2000ml Process Vessels |
| RR153002 | Anchor PTFE Stirrer Shaft - 3000ml Process Vessels |
| RR153007 | Retreat Curve PTFE Stirrer Shaft - 3000ml Process Vessels |
| RR153012 | Turbine PTFE Stirrer Shaft - 3000ml Process Vessels |
| RR155002 | Anchor PTFE Stirrer Shaft - 5000ml Process Vessels |
| RR155007 | Retreat Curve PTFE Stirrer Shaft - 5000ml Process Vessels |
| RR155012 | Turbine PTFE Stirrer Shaft - 5000ml Process Vessels |

AVA Lab Control Software - *take control of your chemistry*

Control multi-device jacketed reaction system

Multi-device reactions

- Control up to 4 reaction systems with up to 16 devices on one screen
- Create complex experiments with any number of steps in series or in parallel
- Pre-program multi-step recipe, with the flexibility to make and track on-the-fly adjustments
- Interlink devices and set feedback/control loops, end-point conditions and safety limits

No more manual data logging or manual errors

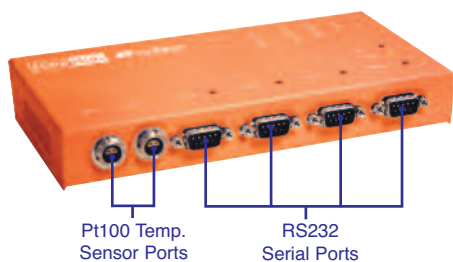
- Automatically record reaction parameters and log what you do, as you do it
- Repeat experiments accurately for reproducible and consistent results
- Create reports in a few clicks or export data as a CSV file for further analysis
- Share results between users to improve research and collaboration

Safe unattended chemistry

- Automate cooling during exothermic events
- Link devices such as balances and pumps for controlled, unattended reagent additions
- Define safety overrides and cut-off conditions
- Configure audio and visual alarms

Data Hub

Using the Data Hub, AVA can control and log multiple 3rd party devices with RS232 serial interface.



Data Hub Specifications

- 4 x RS232 ports
- 2 x Pt100 temperature sensor ports with LEMO connection
- 1 x Ethernet port
- 2 x Ethernet cables

AVA Software Kit includes:

- AVA Software
- Laptop controller
- 4 Port data hub
- 1 year AVA Care Support

AVA Care Support

- Free support for 1st year
- Free priority email and telephone support
- Free set up and application support
- Free software updates during support period, keeping software current

Download and try the software for FREE

Learn how AVA software works - try before you buy

- Simulate control of devices
- Set up apparatus and control experimental Schedules
- Share setups and schedules with other AVA users
- Analyse results and create reports for real or simulated data
- Find out more about AVA Level 1-3 on our website

Download
Free AVA
Demo
www.interchim.com



Level 4



Control and log reaction systems with multiple devices

Control a variety of devices

AVA software includes a library of pre-configured driver files allowing easy integration with a wide range of 3rd party devices.

Radleys also provide a 'New Driver Configuration Service' if required.



World leaders in innovative productivity tools for chemists

Radleys provides innovative chemistry equipment for safer, cleaner, greener and more productive chemical research.

We have been manufacturing scientific glassware and laboratory instruments for over 50 years and our customers include leading blue-chip industrial and academic research facilities around the world. Our areas of expertise are focused on equipment for chemical synthesis, process development, work-up and evaporation.

Visit www.interchim.com to see our full range of chemistry productivity tools.

© Radleys (R.B.Radley & Co Ltd) 2019



211 bis av JF Kennedy - BP1140
03103 Montluçon cedex - France
t: +33 4 70 03 88 55
Hot-Line: +33 4 70 03 73 01
f: +33 4 70 03 82 60
e: interfine@interchim.fr
e: germany@interchim.fr