

Prestained Protein Ladder

Cat. No. PM001-0500

Size: 500 µl

- Broad range: 15-175 kDa.
- Ready-to-use: supplied in a loading buffer for direct loading on gels.
- Easy to identify: includes the 20 and 75 kDa reference bands coupled with an orange dye.
- Sharp bands.

Description

Prestained Protein Ladder, is a mixture of purified proteins covalently coupled to two dyes, that resolves to 10 bands when electrophoresed. The covalent coupling of the dye to the proteins affects their electrophoretic behavior in SDS-PAGE gels relative to unstained proteins. However, they are suitable for approximate molecular weight determination when calibrated against unstained standards in the same system.

The reference bands of 20 and 75 kDa are particularly enhanced with orange color for easy identification.

Applications

- Monitoring of protein migration during SDS-polyacrylamide gel electrophoresis.
- Monitoring of protein transfer onto membranes during Western blotting.
- Sizing of proteins on SDS-polyacrylamide gels and Western blots.

Quality Control

Tested in SDS-polyacrylamide gel electrophoresis and Western blotting.

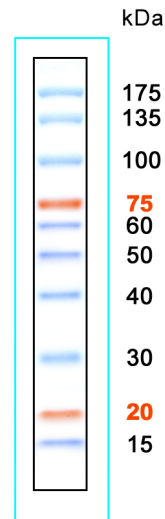
Storage

Stable at +4°C for 3 months

Store at -20°C for 24 months

Recommendations for Loading

1. Thaw the ladder either at room temperature or at 37-40°C for a few minutes to dissolve precipitated solids. **Do not boil.**
2. Mix thoroughly, to ensure that the solution is homogeneous.
3. Load the following volumes of the ladder on SDS-polyacrylamide gel:
 - 5 µl per well for mini-gels, 3 µl per well for blots;
 - 10 µl per well for large gels, 6 µl per well for blots.



4-20 % SDS-PAGE
(Tris-Glycine)

