

Protein Molecular Weight Markers

Products Description

Product name
cat.number
Pro-Stain Protein MW Markers, Blue/Violet stained (9-198 kD/9bands) MP2940, 500 µl (5 ~ 20 µl loading according to Gel Size)
Pro-View Protein MW Markers, for Western-Blots (16~215 kD/8bands) 1E7370, 250 µl (5 ~ 20 ml loading according to Gel Size)

Storage: Protein molecular weight markers should be stored at -20°C.
The shelf life of protein markers is six months from the receiving date.

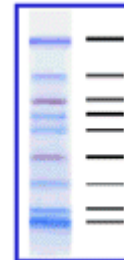
Introduction

Protein molecular weight markers are used to monitor the molecular weight of unknown proteins on SDS-PAGE.

PRO-STAIN

PRO-STAIN Protein Molecular Weight Markers for Broad Range is a mixture of purified proteins covalently coupled to a blue and violet dye that resolved to 9 bands between 9 and 198kDa when electrophoresed. The product contain high-concentration of Proteins, therefore very little amount is necessary of them. It designed for monitoring of protein separation during SDS-PAGE, verifying western blot transfer efficiency, perfect for CBB staining, silver staining (it is necessary to dilute to 1/100), and negative staining. Color remain the same even after blotting. It is supplied in gel loading buffer and is ready-to-use.

- No heating step before use
- Dual color prestained (Blue/Violet)
- Nine (9) kinds of prestained proteins
- Broad range (9 kDa ~ 198 kDa)
- Western blot, CBB staining, Silver staining, and Negative staining
- Ready-to-use



Proteins:

Myosin (198kD, Blue)
 β-Galactosidase (115kD, Blue)
 Bovine Serum Albumin (90.5kD, Violet)
 Glutamine Deshydrogenase (61.5kDa, Blue)
 Ovalbumin (46.2kD, Blue)
 Carbonic Anhydrase (37.2kD, Violet)
 Myoglobin (26kD, Blue)
 Lysozyme (18.5kD, Blue)
 Aprotinin (9kD, Blue)

Buffer:

3%_(w/v) SDS, 10mM DTT, 2mM EDTA-2Na,
 0.01%_(w/v) NaN₃, 10mM Tris-HCl (pH 6.8),
 33%_(v/v) Glycerol

Storage: -20° (one year) (M)

Application: Western blot, control of WB transfert by CBB staining, Silver staining, and Negative staining

Contact your local distributor

uptima@interchim.com

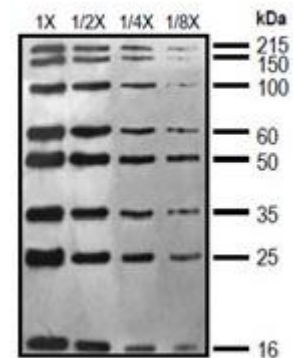
FT-MP2940

PRO-VIEW

PRO-VIEW Protein MW marker is designed for Western blot, being visualized by your usual immunostaining procedure.

- Broad Range : 16~215 KDa (8 bands)
- Ready and easy-to-use procedure (no need to boil)
- Direct marker visualization on western blots (x-ray film, membranes etc.)
- Accurate protein molecular weight estimation directly on western blots.
- Useful for optimizing western transfer, antibody intactness, and detection system.

8~20% SDS-PAGE Blot



ProView Western Protein Marker (for Broad Range) is a mixture of purified recombinant protein standards designed to bind immunoglobulins with high affinity in a denatured form, yielding 8 band between 16kDa and 215kDa when electrophoresed.

You can quickly and easily visualize discrete bands on your western blot only by a simple application of marker with your samples. You can use it in chemiluminescent or chromogenic detection methods of your choice. It's compatible with most immunodetection methods, including horseradish peroxidase or alkaline phosphatase systems. ProView Western Protein Marker can also be used for optimizing your western transfer condition, verification of antibody conjugated peroxidase intactness, and controlling the detection system.

ProView Western Protein Marker (for Broad Range) is supplied in gel loading buffer and is ready-to-use (no need to boil before use).

Proteins: recombinant proteins with 16, 25, 35, 50, 60, 100, 150 and 250KD MW.

Buffer: 1% SDS, 62.5mM Tris.HCl(pH6.8), 1% bme, 0.01% BPB, 35%(v:v) Glycerol

Storage: -20° (one year) ^(M)

CAUTIONS

- The marker band will not be observed on the CBB stained PAGE-gel. Because the amount of each protein was optimized to western-blot detection.
- Before applying in your samples, you must adjust appropriate loading quantity by serial dilution experiments. Load 5µl of serially diluted marker (1x,1/2x,1/4x,1/8x, and soon), and try western detection according to the same procedure as you do usually. Then determine best fitted concentration of the diluted marker for getting your best data image.

PROTOCOL

- 1.Let ProView Western Protein Marker adjust to room temperature before use.
After completely thawing, mix them thoroughly.
- 2.Load 5µL of the marker on an appropriate SDS-PAGE gel, and load samples.
- 3.Run the samples using the desired buffer system.
- 4.Transfer the proteins to a blotting membrane as described elsewhere.
- 5.Perform the blocking, primary ab incubation, and secondary ab incubation steps with the blot using a method of choice.
- 6.Visualize the proteins using a chemiluminescent or colorimetric detection system.
- 7.After detection, you should observe eight protein bands of the standard as shown on the previous page
- 8.Perform 8-20% SDS-PAGE Blot:
Apply 5µL on mini-gel and electrophoresed for 1hr at 15% SDS-PAGE gel.
After electrophoresis, transfer for 2hr at 80 volts.

TROUBLE SHOOTING GUIDE

Problems	Solutions
Weak or no signals	Check your detection system is functional. Check western transfer is completed.

Contact your local distributor

uptima@interchim.com

Uptima, powered by
 213 Avenue J.F. Kennedy - BP 1140
 03103 Montluçon Cedex - France
 Tél. 04 70 03 88 55 - Fax 04 70 03 82 60

FT-MP2940

Unusual dense band appeared	Uneven western transfer due to size difference, check western transfer conditions.
Highly dense or dispersed signals	Decrease marker loading volume up to 1/10 to 1/1,000. Dilute with 1x sample buffer.

Related / associated products and documents

- Acrylamide:bis-acrylamide 37.5:1, solution 40%, 864937
- GeBaGel 4-12% pre-cast gel, BI9710
- CooBlue FX Instant Protein Gel Stain, UPG4562A
- Lumitein fluorescent Protein Gel Stain, CJ5261

See [BioSciences Innovations catalogue](#) and [e-search tool](#).

Ordering information

Catalog size quantities and prices may be found at <http://www.interchim.com>.
Please inquire for higher quantities (availability, shipment conditions).

For any information, please ask : Uptima / Interchim; Hotline : +33(0)4 70 03 73 06

Disclaimer : Materials from Uptima are sold **for research use only**, and are not intended for food, drug, household, or cosmetic use.
Uptima is not liable for any damage resulting from handling or contact with this product.

Rev.N11E

Contact your local distributor

uptima@interchim.com

Uptima, powered by
 **interchim**
213 Avenue J.F. Kennedy - BP 1140
03103 Montluçon Cedex - France
Tél. 04 70 03 88 55 - Fax 04 70 03 82 60