



Rabbit polyclonal to Human Liver X receptor β

REF0020

Product Name. Rabbit polyclonal Anti-LXR

Description. IgG Anti Human LXR is developed in rabbit using recombinant Human LXR produced in plants. Purified IgG prepared by affinity chromatography on protein G. Purity >98%.

Immunogen.

HHHHHHSSGIEGRGRLLIKHMTPTGGSEAGSQSGEGEGVQ
LTAAQELMIQQLVAAQLQCNKRSFSDQPKVTPWPLGADP
QSRDARQQRFAHFTELAIISVQEIVDFAKQVPGFLQLGR
EDQIALLKASTIEIMLLETARRYNHETECITFLKDFTYS
KDDFHRAGLQVEFINPIFEFSRAMRRLGLDDAEYALLIA
INIFSADRPNVQEPGRVEALQQPYVEALLSYTRIKRPQD
QLRFPRMLMKLVSLRTLSSVHSEQVFALRLQDKKLPLLL
SEIWDVHE

Source. Rabbit.

Clonality. Polyclonal.

Formulation. Provided as 0.2 μ m sterile filtered solution in phosphate buffered saline. Lyophilized.

Packaging. ^a 100 μ g; ^b 1mg

Reconstitution. ^a 100 μ l; ^b 1 ml distilled water to a final concentration of ^{a,b} 1 mg/ml

Applications.

- **Western Blot:** to detect human 250 ng LXR by WB analysis this IgG can be used in a dilution of 1/500 - 1/1,000.
- **Neutralization:** No data available.

Where this antibody has not been tested for use in a particular technique this not necessarily excludes its use in such procedures.

Optimal dilution conditions should be determined by the final user.

Due to Agrenvec Immunogen production system, this IgG have no cross reactions with other mammalian proteins.

Bulk sizes are available upon request.

For R+D purposes only. Purchaser must determine the suitability of the product(s) for their particular use.

Storage/Stability. Store at -20°C. For long term storage freezes in working aliquots at -20°C. Repeated freezing and thawing is not recommended.

Data

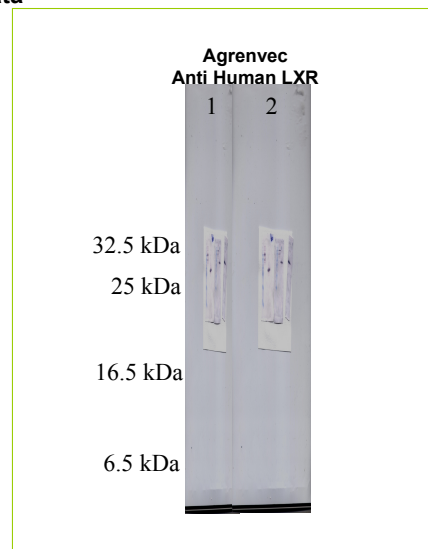


Fig. SDS-PAGE & Western Blot Rabbit IgG Anti-Human LXR.
The membrane was probed with LXR polyclonal antibody 1:1,000.
Lane 1.-MW marker.
Lane 2.-200 ng of rHuman LXR protein.