



## Rabbit polyclonal to Human BMP 7

**REF0017**

**Product Name.** Rabbit polyclonal Anti-Human BMP 7

**Description.** IgG Anti Human BMP 7 is developed in rabbit using recombinant Human BMP 7 produced in plants. Purified IgG prepared by affinity chromatography on protein G. Purity >98%.

**Immunogen.**

STGSKQRSQNRSKTPKNQEALRMANVAENSSSDQRQACKK  
HELYVSFRDLGWQDWIIAPEGYAAYYCEGECAPLNSYMNA  
TNHAIQTLVHFIPETVPKPCCAPTQLNAISVLYFDDSSNVIL  
KKYRNMVVRACGCH

**Source.** Rabbit.

**Clonality.** Polyclonal.

**Formulation.** Provided as 0.2 µm sterile filtered solution in phosphate buffered saline. Lyophilized.

**Packaging.** <sup>a</sup> 100 µg; <sup>b</sup> 1 mg

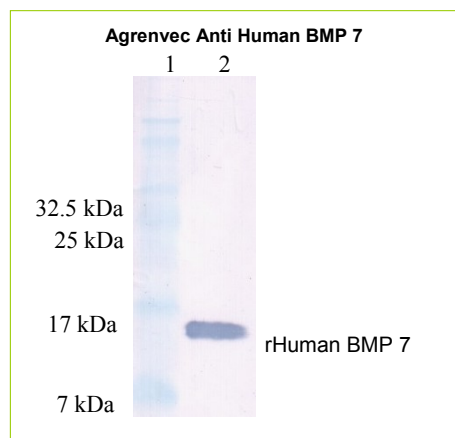
**Reconstitution.** <sup>a</sup> 100 µl; <sup>b</sup> 1 ml distilled water to a final concentration of <sup>a</sup> <sup>b</sup> 1 mg/ml

**Applications.**

- Western Blot: to detect human BMP 7 by WB analysis this IgG can be used in a dilution of 1/500.
- Neutralization: No data available.

**Storage/Stability.** Store at -20°C. For long term storage freezes in working aliquots at -20°C. Repeated freezing and thawing is not recommended.

**Data**



**Fig. SDS-PAGE & Western Blot Rabbit IgG Anti-Human BMP 7**  
The membrane was probed with IgG Agrenvec Anti-BMP 7 1:500.  
Lane 1.-MW marker.  
Lane 2.-300 ng of rHuman BMP 7 protein.

Where this antibody has not been tested for use in a particular technique this not necessarily excludes its use in such procedures.

Optimal dilution conditions should be determined by the final user.

*Due to Agrenvec Immunogen production system, this IgG have no cross reactions with other mammalian proteins.*

**Bulk sizes are available upon request.**

**For R+D purposes only. Purchaser must determine the suitability of the product(s) for their particular use.**