



Rabbit polyclonal to Human Activin A

RF0016

Product Name. Rabbit polyclonal Anti-Human Activin A

Description. IgG Anti Human Activin A is developed in rabbit using recombinant Human Activin A produced in plants. Purified IgG prepared by affinity chromatography on protein G. Purity >98%.

Immunogen.

GLECDGKVNICKKKQFFVSFKDIGWNDWIIAPSGYHANYCEGE
CPSHIAGTSGSSLSFSTVINHYRMGRGHSPFANLKSCCVPTKLR
PMSMLYYDDGQNIKKDIQNMIVEECGCS

Source. Rabbit.

Clonality. Polyclonal.

Formulation. Provided as 0.2 µm sterile filtered solution in phosphate buffered saline. Lyophilized.

Packaging. ^a 50 µg; ^b 1 mg

Reconstitution. ^a 100 µl; ^b 1 ml distilled water to a final concentration of ^a 0.5 mg/ml; ^b 1 mg/ml

Applications.

- **ELISA:** to detect Human Activin A by indirect ELISA a dilution of at least 1/1,000 of this antibody is required. This antibody, in conjunction with compatible secondary reagents (anti rabbit AP conjugated), allows the detection of 0.2-1 ng /well of Human Activin A.
- **Western Blot:** to detect human Activin A by WB analysis this IgG can be used in a dilution of 1/1,000.
- **Neutralization:** No data available.

Where this antibody has not been tested for use in a particular technique this not necessarily excludes its use in such procedures.

Optimal dilution conditions should be determined by the final user.

Due to Agrenvec Immunogen production system, this IgG have no cross reactions with other mammalian proteins.

Bulk sizes are available upon request.

For R+D purposes only. Purchaser must determine the suitability of the product(s) for their particular use.

Storage/Stability. Store at -20°C. For long term storage freezes in working aliquots at -20°C. Repeated freezing and thawing is not recommended.

Data

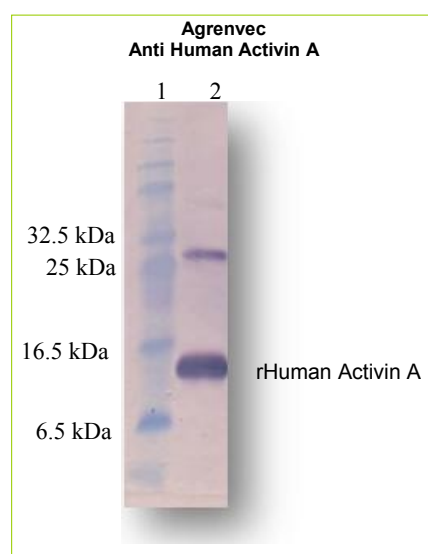


Fig. SDS-PAGE & Western Blot Rabbit IgG Anti-Human Activin A.
The membrane was probed with Agrenvec Activin A polyclonal antibody 1:1,000.
Lane 1.-MW marker.
Lane 2.-200 ng of rHuman Activin A protein.