



## Rabbit polyclonal to Human TGFβ-2

### REF0015

**Product Name.** Rabbit polyclonal Anti-Human TGFβ-2.

**Description.** IgG Anti Human TGFβ-2 is developed in rabbit using recombinant Human TGFβ-2 produced in plants. Purified IgG prepared by affinity chromatography on protein G. Purity >98%

### Immunogen.

ALDAAYCFRNVQDNCCLRPLYIDFKRDLGWKWIHEPK  
GYNANFCAGACPYLWSSDTQHSRVLSLYNTINPEASA  
SPCCVSQDLEPLTI LYYIGKTPKIEQLSNMIVKSCKCS

**Source.** Rabbit.

**Clonality.** Polyclonal.

**Formulation.** Provided as 0.2 µm sterile filtered solution in phosphate buffered saline. Lyophilized.

**Packaging.** <sup>a</sup> 50 µg; <sup>b</sup> 1 mg

**Reconstitution.** . <sup>a</sup> 100 µl; <sup>b</sup> 1 ml distilled water to a final concentration of <sup>a</sup> 0.5 mg/ml; <sup>b</sup> 1 mg/ml

### Applications.

- Western Blot: to detect human TGFβ-2 by WB analysis this IgG can be used in a dilution of 1/1000.
- Neutralization: No data available.

Where this antibody has not been tested for use in a particular technique this not necessarily excludes its use in such procedures.

Optimal dilution conditions should be determined by the final user.

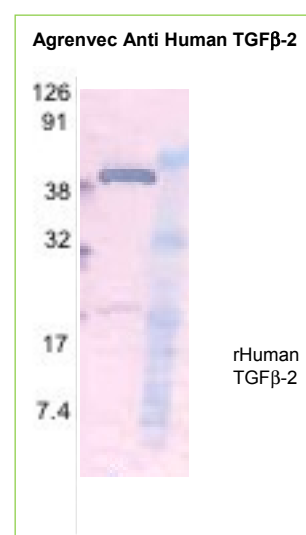
**Bulk sizes are available upon request.**

**For R+D purposes only. Purchaser must determine the suitability of the product(s) for their particular use.**

*Due to Agrenvec Immunogen production system, this IgG have no cross reactions with other mammalian proteins.*

**Storage/Stability.** Store at -20°C. For long term storage freezes in working aliquots at -20°C. Repeated freezing and thawing is not recommended.

### Data



**Fig.SDS-PAGE & Western Blot Rabbit IgG Anti-Human TGFβ-2.**  
The membrane was probed with Agrenvec IgG Anti-TGFβ-2 1:1000.  
Lane 1.- MW marker (kDa).  
Lane 2.- 100 ng of TGFβ-2 protein.