



**AGRENVEC**  
rProteins expressed in plants



**HO2140 Datasheet**

## Rabbit polyclonal to Human Interferon $\alpha$ 2a

**REF0013**

**Product Name.** Rabbit polyclonal Anti-Human Interferon  $\alpha$  2a.

**Description.** IgG Anti Human Interferon  $\alpha$  2a is developed in rabbit using recombinant Human Interferon  $\alpha$  2a expressed in plants. Purified IgG prepared by affinity chromatography on protein G. Purity >98%.

### Immunogen

CDLPQTHSLGSRRTMLLAQMRKISLFSCLKDRHDFGFPQEEFGNQ  
FQKAETIPVLHEMIQQIFNLFSTKDSSAAWDETLLDKFYTELYQQQND  
LEACVIQGVGVGTETPLMNEDSILAVRKYFQRITLYLKEKKYSPCAWEV  
VRAEIMRSFSLSTNLQESLSRKE

**Source.** Rabbit.

**Clonality.** Polyclonal.

**Formulation.** Provided as 0.2  $\mu$ m sterile filtered solution in phosphate buffered saline. Lyophilized.

**Packaging.** <sup>a</sup> 50  $\mu$ g; <sup>b</sup> 1 mg

**Reconstitution.** <sup>a</sup> 100  $\mu$ l; <sup>b</sup> 1 ml distilled water to a final concentration of <sup>a</sup> 0.5 mg/ml; <sup>b</sup> 1 mg/ml

### Applications.

- **ELISA:** to detect Human Interferon  $\alpha$  2a by indirect ELISA a dilution of at least 1/1,000 of this antibody is required. This antibody, in conjunction with compatible secondary reagents (anti rabbit AP conjugated), allows the detection of 0.2-1 ng /well of human Interferon  $\alpha$  2a.
- **Western Blot:** to detect human Interferon  $\alpha$  2a by WB analysis this antibody can be used in a dilution of 1/1,500.
- **Neutralization:** No data available.

Anti-human Interferon  $\alpha$  2a has not been assayed for cross-reactivity with Hu-IFN- $\beta$  or Hu-IFN- $\gamma$  or for cross-reactivity with interferon from other species.

Where this antibody has not been tested for use in a particular technique this not necessarily excludes its use in such procedures.

Optimal dilution conditions should be determined by the final user.

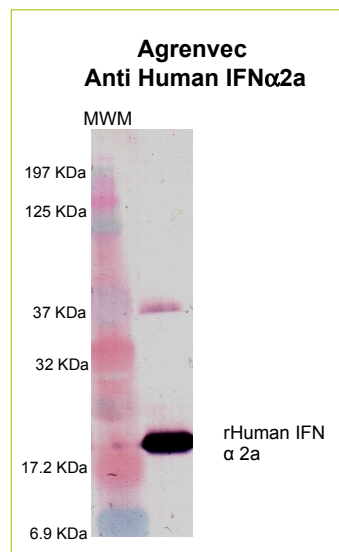
*Due to Agrenvec Immunogen production system, this IgG have no cross reactions with other mammalian proteins.*

**Bulk sizes are available upon request.**

**For R+D purposes only. Purchaser must determine the suitability of the product(s) for their particular use.**

**Storage/Stability.** Store at -20°C. For long term storage freezes in working aliquots at -20°C. Repeated freezing and thawing is not recommended.

### Data



**Fig. SDS-PAGE & Western Blot Rabbit IgG Anti-Human Interferon  $\alpha$  2a.**  
The membrane was probed with Agrenvec IgG Anti-IFN  $\alpha$  2a 1: 1,500.  
Left lane.- MW marker. (kDa)  
Right lane.- 300 ng of Human IFN  $\alpha$  2a protein expressed in *E.coli*.