

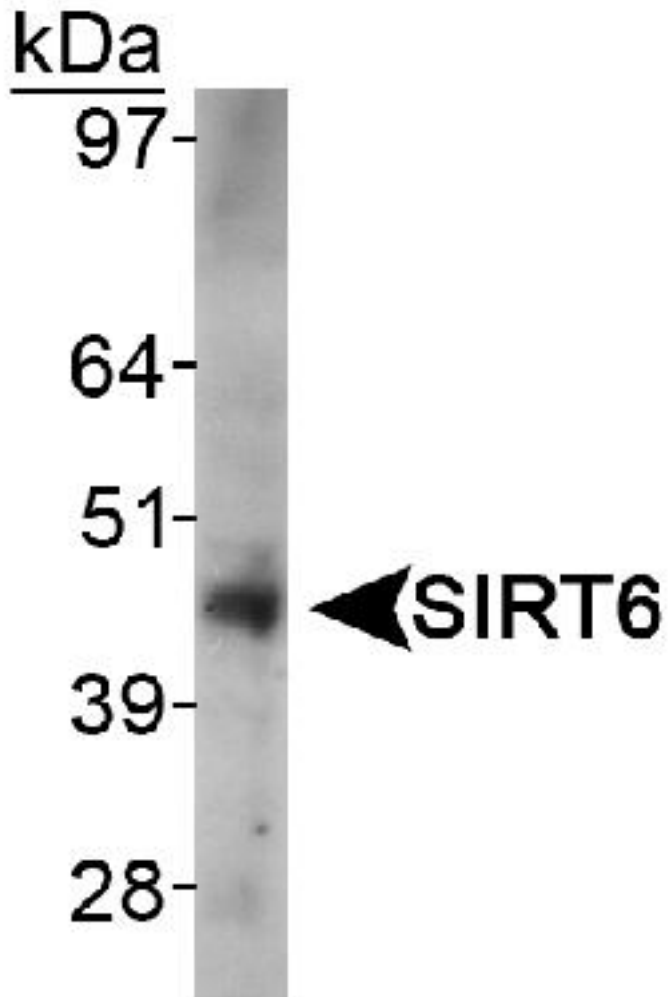
SIRT6 antibody

Rabbit Polyclonal antibody to SIRT6

Catalog Number **NB 100-2523**

- Background:** Sirtuins regulate epigenetic gene silencing. SIRT6 (Mono-ADP-ribosyltransferase sirtuin-6), a mouse Sir2 homolog, is a chromatin-associated nuclear ADP-ribosyltransferase protein. It appears to be involved in DNA repair and may also play a role in human ageing.
- Alternate Names:** Mono-ADP-ribosyltransferase sirtuin-6, SIR2-like protein 6, Silent information regulator 2-like protein 6
- Immunogen:** A synthetic peptide made to an internal region of the human SIRT6 protein (within residues 250-350). [Swiss-Prot Q8N6T7]
- Cellular Localization:** Nuclear
- Host:** Rabbit
- Species Reactivity:** Human. Other species have not been tested. The immunogen used for the production of this antibody shows 78% homology with the mouse protein and 71% homology with the rat protein.
- Uses and Dilutions:** This antibody is useful for Western blot analysis, where a band is seen at ~39 kDa. A higher MW band ~59 kDa may be seen with lower dilutions (ie: 2 ug/ml).
- Suggested starting dilutions are as follows:*
- Western Blot: 0.5-2.0 ug/ml.
- *Investigator should determine optimal working conditions and dilutions.
- Positive Control:** HeLa whole cell lysate [NB 800-PC1]
- Form:** 0.1 ml of affinity purified rabbit antisera.
- Concentration:** 1 mg/ml
- Storage Buffer:** Tris-citrate/phosphate (pH 7-8)
- Preservative:** 0.1% sodium azide
- Storage:** 2-8 degrees Celcius.
- Limitations:** This product is for research use only and is not approved for use in humans or in clinical diagnosis.
- General References:** 1. Michishita, E., et al. Evolutionarily conserved and nonconserved cellular localizations and functions of human SIRT proteins. Mol. Bio. Cell. 16: 4623-4635 (2005)

Image(s)



Detection of SIRT6 in HeLa whole cell lysate using NB 100-2523.