

## Crystallin AB antibody

Rabbit Polyclonal antibody to Crystallin AB

Catalog Number **NB 100-2520**

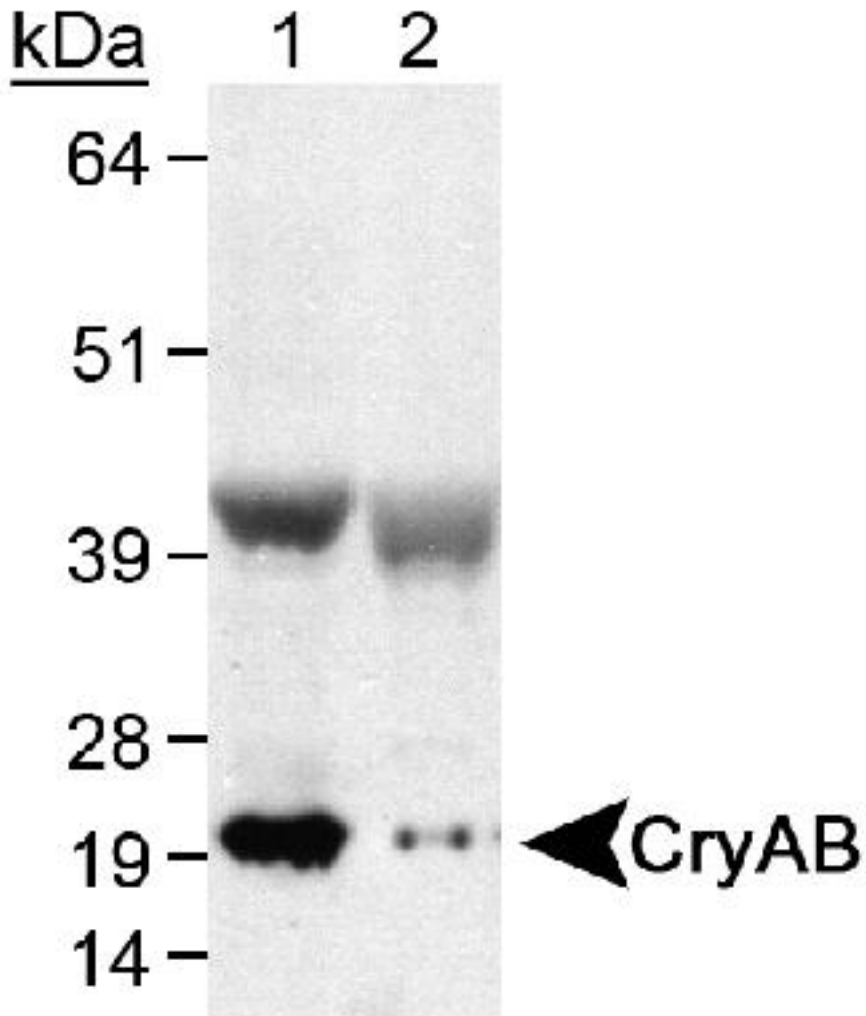
- Background:** Crystallin AB (CryAB) is a developmentally regulated small heat shock protein known to protect cells from stress damage. It may also play an important role in the Golgi reorganization during cell division. CryAB is known to be associated with a number of neurodegenerative pathologies such as Alzheimer disease and multiple sclerosis. As well, it has been found to be expressed in breast tumors of patients with shorter survival, suggesting that it may be a useful marker in identifying aggressive breast cancer.
- Alternate Names:** Alpha crystallin B chain antibody, CryAB antibody, Alpha (B)-crystallin antibody, Rosenthal fiber component antibody, Heat-shock protein beta-5 antibody, HspB5 antibody, CryA2 antibody, AACRYA antibody, Alpha crystallin B chain antibody, CRYA2 antibody, Crystallin alpha polypeptide 2 antibody, CTPP 2 antibody, CTPP2 antibody, Heat shock 20 kD like protein antibody, Heat shock protein beta 5 antibody, HSPB5 antibody, Rosenthal fiber component antibody
- Specificity:** This antibody is specific for crystallin AB protein.
- Immunogen:** A synthetic peptide made to a C-terminal region of the human Crystallin AB protein (within residues 100-175). [Swiss-Prot P02511]
- Host:** Rabbit
- Species Reactivity:** Human and mouse. Other species have not been tested. The immunogen used for the production of this antibody has 100% homology with rat, sheep, rabbit, monkey, hamster, cow, and pig proteins and 92% homology with mouse protein.
- Uses and Dilutions:** This antibody is useful for Western blot analysis, where a band is seen at ~20 kDa. There is also a band of greater intensity at ~40 kDa that may be an aggregated heteromeric complex.
- Suggested starting dilutions are as follows:\*
- Western Blot: 0.5-1.0 ug/ml.
- \*Investigator should determine optimal working conditions and dilutions.  
\*\*CryAB aggregates with homologous proteins, including CryAA and the small heat shock protein HSP28, to form large heteromeric complexes.
- Positive Control:** Human and mouse skeletal muscle lysate
- Form:** 0.1 ml of affinity purified rabbit antisera.
- Concentration:** 0.9 mg/ml
- Storage Buffer:** Tris-citrate/phosphate (pH 7-8)
- Preservative:** 0.1% sodium azide
- Storage:** 2-8 degrees Celcius.
- Limitations:** This product is for research use only and is not approved for use in humans or in clinical

diagnosis.

**General References:**

1. Gangalum, RK., et al. JCB. 279(42): 43374-43377 (2004)
2. Sanbe, A., et al. PNAS. 102(38): 13592-13597 (2005)
3. Liu, H., et al. JCB. 280(26): 25071-25078 (2005)

**Image(s)**



Detection of CryAB using NB 100-2520 (0.5ug/ml).<br>

Lane 1: Human skeletal muscle<br>

Lane 2: Mouse skeletal muscle