



BlueAQUA - Prestained Protein Ladder

15 MAR 2021

Catalog Number	Size	Range
PM019-0500	500 μ l	10 to 180 kDa

Storage Conditions

Stable for up to 2 weeks at 25°C.

Stable for up to 3 months at 4°C.

Stable for up to 24 months at -20°C.

Description

The BlueAQUA Prestained Protein Ladder is a combination of 11 pre-stained proteins with molecular weights from 10 to 180 kDa. The 11 recombinant proteins are covalently coupled with blue chromophore, and 2 reference bands at 25 kDa and 72 kDa serve as reference bands. The BlueAQUA Prestained Protein Ladder keeps track of the size and separation of proteins during SDS-polyacrylamide gel electrophoresis, approximating protein size and validating Western transfer efficiency on PVDF, nylon, or nitrocellulose membranes.

Kit Content(s)

BlueAQUA prestained protein ladder	500 μ l x 1 vial
------------------------------------	----------------------

Storage Buffer

Approximately 0.1~0.5 mg/ml of each protein in buffer (20 mM Trisphosphate pH 7.5 at 25°C), 2% SDS, 0.2 mM Dithiothreitol, 3.6 M Urea, and 15% (v/v) Glycerol.

Required materials but not provided

- Vertical Electrophoresis system
- Power supplies
- Vortex or equivalent
- Microcentrifuge

Reaction Setup

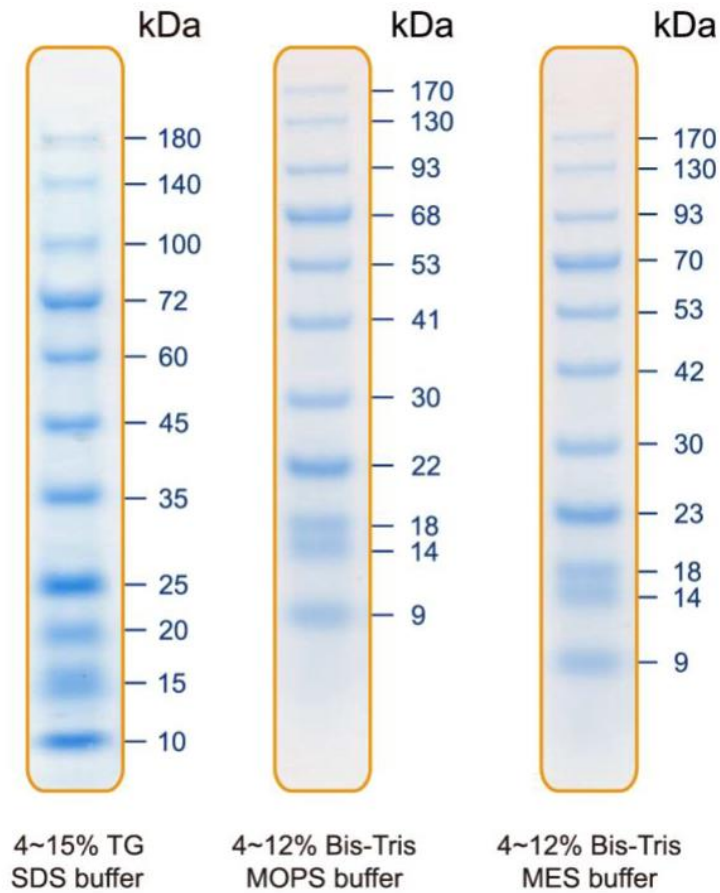
3 μ l or 5 μ l per loading for clear visualization during electrophoresis on 15-well or 10-well mini-gel, respectively. 2.5 μ l per well for general Western transferring.





Guide for Molecular Weight Estimation (kDa)

Refer to the BlueAQUA Prestained Protein Ladder patterns in various electrophoresis conditions:



Important notes

The molecular weight of each protein (kDa) was measured against an unstained protein ladder in every electrophoresis condition. Additional data should be considered for a more accurate adjustment.