

# Interchim Innovations

Interbiotech - BioScience Innovations

10402

## Cultrex® Basement Membrane Extract



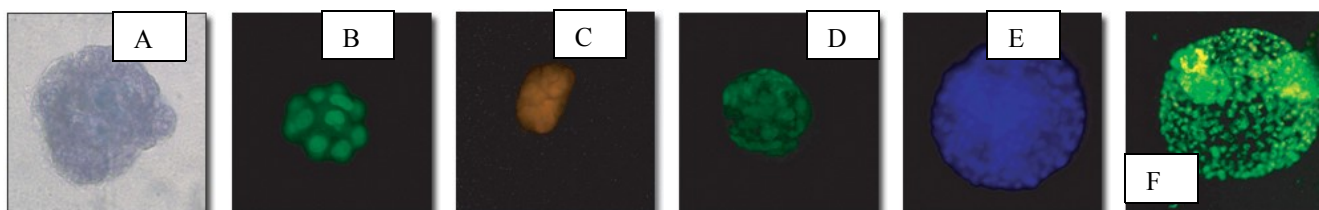
Cultrex Basement Membrane Extract is a soluble form of basement membrane purified from Engelbreth-tumor. The extract gels at 37°C to form a reconstituted basement membrane. The major components of the Basement Membrane Extract include laminin I, collagen IV, entactin, and heparin sulfate proteoglycan. It is ideal when one requires different thickness and concentrations (i.e. extract at <5 mg/ml for support of primary cell propagation; and at >5 mg/ml for cell propagation and differentiation studies).

### Applications

- promotion and maintenance of a differentiated phenotype in a variety of cell cultures including primary epithelial cells, endothelial cells, and smooth muscle cells.
- in vivo and in vitro angiogenesis assays, tube assay, ring assay,
- tumor cell invasion assays, 3D culture assays
- as a vehicle to augment the tumorigenicity of injected tumor cells in nude mice

Interchim BME product are:

- High quality purified basement membrane extract (original Cultrex BME)
- available now as a unique quality (PathClear™):  
**tested and cleared of 31 pathogens and viruses as well as bacteria and mycoplasma.**  
MAP test and LDEV-free analysis available
- available now as a unique quality (PathClear™):  
**tested and cleared of 31 pathogens and viruses as well as bacteria and mycoplasma.**  
MAP test and LDEV-free analysis available



Three-Dimensional Cellular Structures. Staining of MCF-10A cells after sixteen days in 3-D Culture Matrix™ RGF BME with: A) Cell Staining Kit (structural), B) SG staining (nuclear), and C) JC-1 mitochondrial potential staining of PC-3 cells after twelve days in 3-D Culture Matrix™ RGF BME with: D) Calcein AM (cell viability), E) CPA dye 1 (nuclear) and F) DePsipher™ mitochondrial potential staining .

Basement Membrane Extract	product number	alternative to Matrigel #
Cultrex® BME with Phenol Red	FX7000	356234
	FX7001	354234
Cultrex® BME without Phenol Red	FX7061	356237
Cultrex® BME reduced growth factor with Phenol Red	FX7030	356230
	FX7031	354230
Cultrex® BME reduced growth factor without Phenol Red	FX7091	356231
Cultrex® BME High Protein Concentration	BM6041	354248
Cultrex® PathClear™ BME with Phenol Red	JQ9181	N/A
Cultrex® PathClear™ BME without Phenol Red	JQ9191	N/A
Cultrex® PathClear™ BME reduced growth factor with Phenol Red	FX7035	N/A
Cultrex® PathClear™ reduced growth factor BME without Phenol Red		
Cultrex® PathClear™ HC20+™ BME (High Protein concentration BME)	JQ9160	N/A
Cultrex® 3D Culture Matrix™ BME	FX7270	

[Price and technical sheet on line](#)

# Angiogenesis

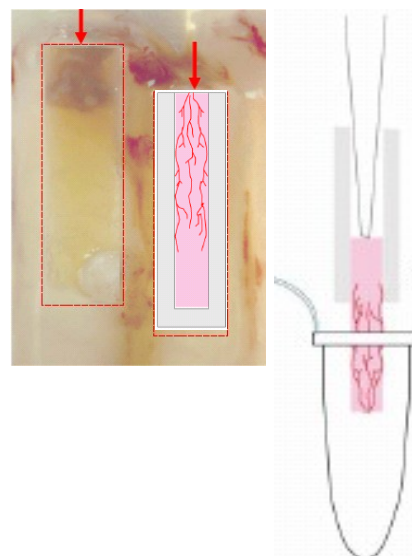
## Cultrex® DIVAA™ Activation Kit

designed for assessing angiogenesis activation. The DIVAA was invented to address the short-comings of the plug assay by **controlling the site for angiogenesis, increasing reproducibility, conserving test compounds, and supplying more statistical data** for quantitative analysis. The kit contains 48 angioreactors, pathogen-free BME, and enough growth factor for eight positive controls. BME provides the correct environment for vessel formation in response to chemoattractants. See [Presentation](#)

- **Quantitative Assay to Assess Angiogenesis In Vivo**
- Alternative for Plug Assay, Chick Chorioallantoic, Membrane (CAM) Assay, Neonatal Rat Retina Assay

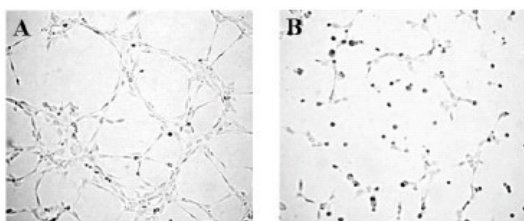
### Advantages

- Prevents absorption
- Directed Angiogenesis
- Fixed surface area for reaction
- Small size (20 µl)



## CAST™ HT Tube Formation Kit

Cultrex® Angiogenesis System HT Tube Formation Kit allows for the detection of inducers and inhibitors of endothelial cell tube formation. Suits 96-well format assays.



**Figure 1.** Human Umbilical Vein Endothelial Cells (HUVEC) were cultured on gelled RGF BME for four hours at 37°C and 5% CO<sub>2</sub> in Endothelial Growth Medium (EGM-2) in the absence (panel A) or presence (panel B) of 5 µM Sulforaphane.

For ordering:

<b>Cultrex® DIVAA™ Starter Kit</b> See <a href="#">Presentation</a> , <a href="#">Technical Sheet</a>	<b>#JZ4020</b>
<b>Cultrex® DIVAA™ Activation Kit</b> see highlight above and more <a href="#">Presentation</a> , <a href="#">Technical Sheet</a>	<b>#FX7380</b>
<b>Cultrex® DIVAA™ Inhibition Kit</b> see highlight above <a href="#">Technical Sheet</a>	<b>#JZ4000</b>
<b>Cultrex® PathClear™ HC20+™ BME</b> (High Protein Concentration BME)	<b>#JQ9160</b>
<b>CAST™ HT Tube Formation Kit</b> see presentation above	<b>#JQ9290</b>

## Related products

### – Cell Invasion/Migration Assay Kits

Cultrex® In Vitro Angiogen. Assay: Endothelial Cell Invasion Kit  
CultreCoat™ 24 well BME Coated Cell Invasion Assay Kit  
Cultrex® 24 well BME Cell Invasion Assay Kit  
Cultrex® 24 well Collagen I Cell Invasion Assay Kit  
Cultrex® 24 well Collagen IV Cell Invasion Assay Kit  
Cultrex® 24 well Laminin I Cell Invasion Assay Kit  
Cultrex® 24 Well Cell Migration Assay  
Cultrex® 96 well BME Cell Invasion Assay Kit  
Cultrex® 96 well Collagen I Cell Invasion Assay Kit  
Cultrex® 96 well Collagen IV Cell Invasion Assay Kit  
Cultrex® 96 well Laminin I Cell Invasion Assay Kit  
Cultrex® 96 well Cell Migration Assay Kit

### – Antibodies to Basement Membrane Proteins

Rat Collagen I Polyclonal Antibody  
Mouse Laminin I Polyclonal Antibody  
Bovine Fibronectin Polyclonal Antibody  
Bovine Vitronectin Polyclonal Antibody

### – 3D Culture Assays

Cultrex® 3D Culture Matrix™ BME  
Cultrex® 3D Culture Matrix™ Rat Collagen I  
Cultrex® 3D Culture Matrix™ Mouse Laminin I

### – Growth Factors

Vascular Endothelial Growth Factor (VEGF), Murine  
Fibroblast Growth Factor – 2 (FGF – 2, FGF basic)  
Epidermal Growth Factor (EGF), Human

### – Specialized Proteins

Cultrex® Rat Collagen I  
Cultrex® Bovine Collagen I  
Cultrex® Mouse Collagen IV  
Cultrex® Mouse Laminin I  
Cultrex® Bovine Fibronectin  
Cultrex® Bovine Vitronectin  
Cultrex® Poly-L-Lysine

## Related products – Cell Viability, Proliferation, Toxicity assays

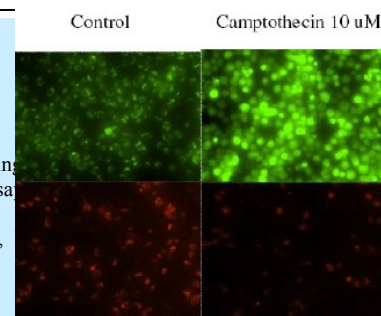
<b>MTT Cell Proliferation Assay</b>	<a href="#">FT-45547A</a> , 10x100tests	
<b>MTT powder</b>	<a href="#">FT-65939A</a> , 1g	
<b>UptiBlue™ Viable Cell Counting Reagent</b>	<a href="#">UP669412</a> , 25ml	UP669413, 100ml
Measure the membrane redox potentiel – superior alternative to MTT Assays		
<b>XTT Cell Proliferation Assay</b>	<a href="#">FX873A</a>	<a href="#">Price and technical sheet on line</a>
<b>TACST™ Hoechst Cell Proliferation Assay</b>	<a href="#">Q70110</a>	
<b>Cultrex® Cell Staining Kit</b>	<a href="#">FX7180</a> , 100ml	
<b>Cultrex® Cell Recovery Solution</b>	<a href="#">BP8891</a> , 100ml	
<b>Grantoxilux cytotoxicity assay (Fluo.)</b>	<a href="#">BP8891</a> , 50 tests	
Measure the GranzymeB (path of cell-mediated apoptosis)		
<b>Cytoxilux cytotoxicity assay (Fluo.)</b>	<a href="#">BP8881</a> , 50 tests	
Measure the caspase-6 (classic path of apoptosis)		
<b>Cultrex® Calcein-AM Cell Viability Kit</b>		

## Related products – Calcium flux study

<b>Fluo-3-AM</b>	<a href="#">FP-78932A</a> , 1mg	FP-78932C, 20x50µg
<b>Fluo-8 NW Calcium Assay Kit *Medium Removal</b>	<a href="#">CJ2560</a> , 10 plates*	CJ2561, 100 plates
<b>Fluo-8 NW Calcium Assay Kit *1% FBS Growth Medium</b>	<a href="#">CJ2550</a> , 10 plates*	CJ2550, 100 plates
* contains Fluo-8 NW, and buffers for performing analysis with 10 plates (96wells, or 384wells)		
<b>Fluo-8 – AM</b>	<a href="#">CP7501</a> , 5x50µg	<a href="#">CP7502</a> , 10x50µg
Over 1000 other fluorescent probes for cell biology studies are available		

## Related products – Apoptosis study

<b>Mitochondrial Membrane Potential Assay (JC-1 based)</b>	<a href="#">52314B</a> , kit 5mg	
<b>Mitochondrial Membrane Potential Assay (JC-10 based)</b>	<a href="#">CL0440</a> , kit 5mg	
a superior alternative to JC-1 in several applications; 520nm (J-monomeric)/570nm (J-aggregates)		
<b>TACS•XL® In Situ Apoptosis Detection Kits</b>	<a href="#">Q69660 (DAB)*</a>	
based on incorporation of bromodeoxyuridine (BrdU) at the 3' OH ends of the DNA fragments that are formed during		
by TdT is more efficient than either biotinylated or digoxigenin labeled nucleotides used in other TUNEL-based assays		
*Also available with the DAB, Blue labels		
*Also available in dedicated kits (CardioTACS, DermaTACS, NeuroTACS, TumorTACS, TiterTACS, FlowTACS,		
<b>TACST™ 2 TdT In Situ Apoptosis Detection Kits</b>	<a href="#">Q69470 (FITC)*</a>	
uses a proprietary cation optimization system and labeling buffer		
*Also available with Blue, DAB Labels		
<b>TACST™ Apoptotic DNA Laddering Kits</b>	<a href="#">Q69930 (Chemiluminescent)*</a>	
detect and estimate the level of internucleosomal DNA fragmentation that occurs during apoptosis.		
*Also available with <a href="#">Ethidium Bromide</a> , <a href="#">Isotopic</a> , <a href="#">Colorimetric</a> labeling)		



## Related products/documents

### [Products HighLights Overview](#)

Other filters: [MediaKap](#) for cell culture media (page E015), [CultureGard](#) for cell clarification, [Krosflo](#)® Tangential filtration modules and systems

## Information inquire

Reply by Fax : +33 (0) 4 70 03 82 60 or email at [interbiotech@interchim.com](mailto:interbiotech@interchim.com)

I wish to receive the complete documentation about: \_\_\_\_\_

Name: \_\_\_\_\_ 2<sup>nd</sup> name: \_\_\_\_\_ Position: \_\_\_\_\_

Company/Institute: \_\_\_\_\_ Service, Lab: \_\_\_\_\_

Address: \_\_\_\_\_

Zip code: \_\_\_\_\_ Town: \_\_\_\_\_

Tel \_\_\_\_\_ Fax \_\_\_\_\_ Email: \_\_\_\_\_

