

Interchim Innovations

Interbiotech - BioScience Innovations

S06E

■ e-Stain Protein Staining System

10-min Protein Gel Staining with ultrasensitivity and simplicity

The eStain L1 Protein Staining System stains rapidly and efficiently the electrophoresis protein gels. It combines three steps of traditional Coomassie blue staining method into one single step to greatly reduce the time required for protein staining.

Benefits

- **Fast:** stain/destain in 10 min or less
- **Automatic:** reagents are pumped in/out automatically
- **Sensitive:** sharply stained protein bands and sensitivity $\geq 12.5\text{ng}$
- **Efficient:** simultaneously stain/destain two mini gels
- **Reliable:** evenly stain and highly repeatable results



eStain L1 is a highly efficient protein PAGE gel staining system, which uses Coomassie Brilliant Blue and a patented protein staining technology. eStain L1 staining system integrates the traditional three steps of fixing-staining-destaining into one and can stain/destain two protein PAGE gels simultaneously in 10 minutes or less.

eStain L1 works with all types of precast as well as homemade PAGE gels. Compared with the conventional staining methods, gels stained by eStain L1 have crisp blue bands with minimum or no background. eStain L1 also offers superior sensitivity compared to conventional methods and can detect as low as 12.5 ng of protein.

Why choose eStain L1?: Featured benefits:

Shorten workflow, increases your productivity!

[Quicker and simpler staining procedure](#) | [Superior sensitivity \(\$\geq 12.5\text{ng}\$ protein\)](#) | [Excellent uniformity and repeatability](#)

Quicker and simpler staining procedure:

Table 1: eStain L1 saves hours to overnight compared to conventional staining methods

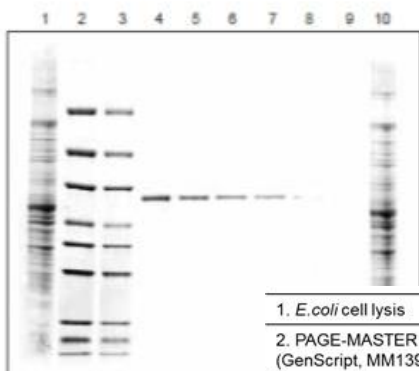
	Wash or Rinse Step	Stain Step	Destain or Rinse Step	Time saved with eStain™ L1
eStain L1	0 min	Electric Staining <10 min	0 min	-
SimplyBlue™ SafeSatin (Basic Protocol)	Rinse 15 min	Stain 1-3 hr	Wash 1-3 hr	2 hr, 15 min-6 hr, 15 min
Bio-Safe Coomassie Stain	Wash 15 min	Stain 1 hr	Rinse 30 min	1 hr, 45 min
Gelcode™ Blue Safe Protein Stain (Basic Protocol)	Wash 15 min	Stain 15 min-1 hr	Destain 1-2 hr	1 hr, 30 min - 3 hr, 15 min

Superior sensitivity ($\geq 12.5\text{ng}$ protein)

Gel: ExpressPlus PAGE Gel, 4-12%, 10 wells (#M41210)

Program: Stain

Time: 9 min 30 s



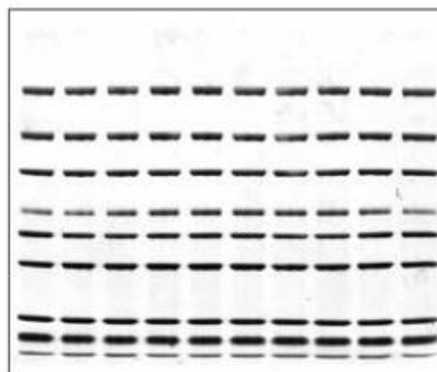
1. <i>E. coli</i> cell lysis	
2. PAGE-MASTER Protein Standard Plus, 5 ul (GenScript, MM1397-500)	
3. PAGE-MASTER Protein Standard Plus, 2.5 ul (GenScript, MM1397-500)	
4. BSA 200 ng	5. BSA 100 ng
6. BSA 50 ng	7. BSA 25 ng
8. BSA 12.5 ng	9. BSA 6.25 ng
10. <i>E. coli</i> cell lysis	

Excellent uniformity and repeatability

Gel: ExpressPlus PAGE Gel, 4-12%, 10 wells (#M41210)

Samples: PAGE-MASTER Protein Standard Plus, 5 ul (#MM1397-500)

Program: Stain **Time:** 9 min 30 s



eStain L1 Protein Staining documentation

Operational Instructions

Step 1. Add distilled water into the tray provided. When gel electrophoresis is complete, carefully remove the gel from the gel cassette and briefly rinse the gel with distilled water for 1 min



Step 2. Open the gel holder and place it on the table with the fabric side down. Carefully place the rinsed gel on the fabric side of the gel holder. Ensure that the upper part of the gel (with comb) point to the axis of the gel holder and is as close to the axis as possible

Step 3. Pre-wet a piece of filter paper (provided) with distilled water and place it on top of the gel



Step 4. Close the gel holder



Step 5. Choose a Channel and insert the gel holder into the channel.

Note : Please ensure that the fabric side of the gel holder is facing the user before inserting it into the Channel



Step 6. Press the corresponding channel to start the program. The channel timer starts to countdown



Step 7. The instrument beeps as the program countdown to 0



Step 8. The channel stops flashing and the screen returns to normal. Take out the gel holder and the stained gel. The staining process is complete.



For complete instructions and advanced programming, please refer to the [manual](#)

•Gel Staining System
eStain Protein Staining Device

L00657

[Prices and technical sheets on-line\(\)](#)

•Reagents consumables

eStain™ L1 Protein Staining Device
eStain™ L1C Protein Staining Device

L00659-1, 1 unit
L00753, 1 unit

•Instrument consumables

Tube (20m)

L00662-20

Tube (10m)

L0062-10

Liquide container (54L)

L00661-5

Liquid container 10L)

M00661-10

Small Two Pass Screw Cap (fit 5L and 10L containers)

L00663, 3u/pk

eStain Gel Holder

L00658, 12u/pk

Related products/documents

[Instruments](#) ^[BF100c]

[Lab Bench LabWare and Consumables](#) ^[BF022c]

[Products HighLights Overview](#)

[BioSciences innovation catalogue](#)

Information inquire

Reply by Fax : +33 (0) 4 70 03 82 60 or email at interbiotech@interchim.com

I wish to receive the complete documentation about: _____

Name: _____ 2nd name: _____ Position: _____

Company/Institute: _____ Service, Lab: _____

Address: _____

Zip code: _____ Town: _____

Tel _____ Fax _____ Email: _____
