

# SARS-CoV-2 (2019-nCoV) Nucleoprotein / NP Antibody, Rabbit MAb

Catalog Number: 40143-R019



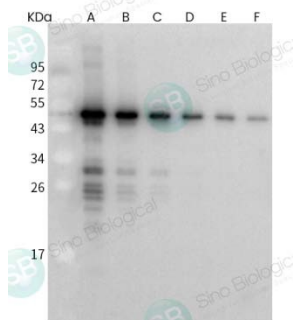
GENERAL INFORMATION	
<b>Ig Type:</b>	Rabbit IgG
<b>Clone ID:</b>	019
<b>Specificity:</b>	SARS-CoV-2 (2019-nCoV) Nucleoprotein / NP Protein Has cross-reactivity in ELISA and WB with SARS-CoV Nucleoprotein / NP Protein (Cat# 40143-V08B).
<b>Formulation:</b>	0.2 µm filtered solution in PBS
<b>Storage:</b>	This antibody can be stored at 2°C-8°C for one month without detectable loss of activity. Antibody products are stable for twelve months from date of receipt when stored at -20°C to -80°C. Preservative-Free.
APPLICATIONS	
<b>Applications:</b>	WB, ELISA, FCM, ICC/IF, IHC-P, IP  (Antibody's applications have not been validated with corresponding viruses. Optimal concentrations/dilutions should be determined by the end user.)
RECOMMENDED CONCENTRATION	
<b>Western Blot</b>	WB: 1:1000-1:5000
<b>ELISA</b>	ELISA: 1:5000-1:10000

**Please Note: Optimal concentrations/dilutions should be determined by the end user.**



# SARS-CoV-2 (2019-nCoV) Nucleoprotein / NP Antibody, Rabbit MAb

Catalog Number: 40143-R019

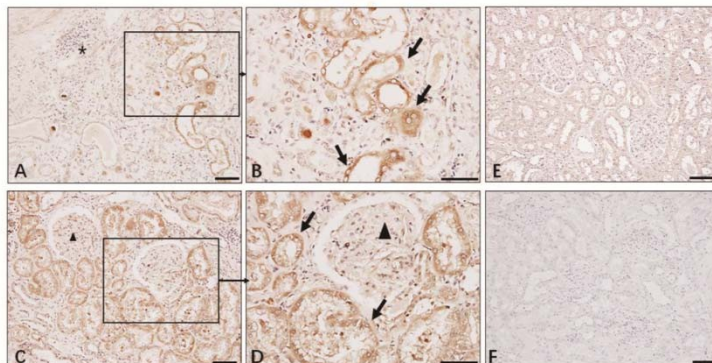


Anti-2019-nCoV  
NP rabbit monoclonal antibody at 1:1000 dilution.

Sample: 2019-nCoV NP Protein (Cat# 40588-V08B)  
Lane A: 30ng  
Lane B: 10ng  
Lane C: 5ng  
Lane D: 2ng  
Lane E: 1ng  
Lane F: 0.5ng

Secondary  
Goat Anti-Rabbit IgG (H+L)/HRP at 1/10000 dilution.

Developed using the ECL technique.  
Performed under reducing conditions.



Immunohistochemistry showed that SARS-CoV-2 NP antigen was accumulated in kidney tubules. The expression of viral NP antigen was detected in kidney tissues from COVID-19 patients undergoing postmortem examination (A ~ D). \* indicated infiltrated lymphocytes, arrow indicated positive tubules, ▲ glomerulus; E: Absence expression of viral NP protein in para-cancerous tissue of kidney; F: Sections incubated with rabbit IgG1 isotype control antibodies. Scale bar= 50 μM.

(Detection Antibody: SARS-CoV-2 NP Rabbit MAb, 1:100, Cat# 41143-R019, Sino Biological Inc.) (Images from medRxiv preprint doi: <https://doi.org/10.1101/2020.03.04.20031120>.)

**FOR RESEARCH USE ONLY. NOT FOR USE IN HUMANS.**