

Human LAG-3 / CD223 Protein, Llama IgG2b Fc Tag, low endotoxin

Catalog # LA3-H525c

For Research Use Only

Description

Source Human LAG-3, Llama IgG2b Fc Tag, low endotoxin (LA3-H525c) is expressed from human 293 cells (HEK293). It contains AA Leu 23 - Leu 450 (Accession # P18627-1). Predicted N-terminus: Leu 23

Predicted N-terminus Leu 23

Protein Structure

LAG-3(Leu 23 - Leu 450) P18627-1	LlamaFc(Glu1 - Ser243) AAX73259.1
-------------------------------------	--------------------------------------

Molecular Characterization This protein carries a llama IgG2b Fc tag at the C-terminus. The protein has a calculated MW of 74.0 kDa. The protein migrates as 90 kDa under reducing (R) condition (SDS-PAGE) due to glycosylation.

Endotoxin Less than 0.01 EU per µg by the LAL method.

Purity >95% as determined by SDS-PAGE.

Bioactivity Measured by its binding ability in a functional ELISA. Immobilized Human LAG-3, Llama IgG2b Fc Tag, low endotoxin (Cat. No. LA3-H525c) at 2 µg/mL (100 µL/well) can bind Anti-Human LAG3 MAb with a linear range of 0.2-4 ng/mL (QC tested).

Formulation and Storage

Formulation Lyophilized from 0.22 µm filtered solution in 50 mM Tris, 100 mM Glycine, 25 mM Arg, 150 mM NaCl, pH7.5. Normally trehalose is added as protectant before lyophilization.
Contact us for customized product form or formulation.

Reconstitution Please see Certificate of Analysis for specific instructions. For best performance, we strongly recommend you to follow the reconstitution protocol provided in the CoA.

Storage For long term storage, the product should be stored at lyophilized state at -20°C or lower. Please avoid repeated freeze-thaw cycles.

No activity loss was observed after storage at:

- 4-8°C for 12 months in lyophilized state;
- -80°C for 6 months under sterile conditions after reconstitution.

Background

Background Lymphocyte activation gene 3 protein (LAG3) is also known as CD antigen CD223 and protein FDC, which belongs to immunoglobulin (Ig) superfamily and contains 4 extracellular Ig-like domains. The LAG3 gene contains 8 exons. The sequence data, exon/intron organization, and chromosomal localization all indicate a close relationship of LAG3 to CD4. LAG3 /CD223 involved in lymphocyte activation. LAG3 /CD223 binds to HLA class-II antigens.

References (1) Triebel F., et al., 1990, J. Exp. Med. 171:1393-1405.
(2) Baixeras E., et al., 1992, J. Exp. Med. 176:327-337.

Please contact us at TechSupport@acrobiosystems.com, if you have any questions about this product.

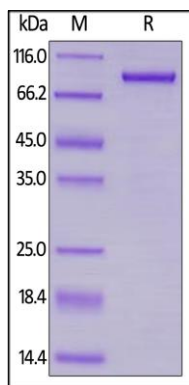
Human LAG-3 / CD223 Protein, Llama IgG2b Fc Tag, low endotoxin

Catalog # LA3-H525c

For Research Use Only

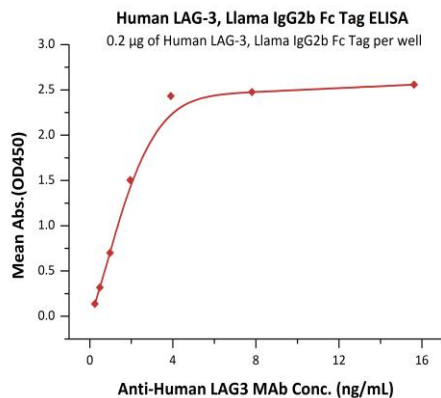
Assay Data

SDS-PAGE Data



Human LAG-3, Llama IgG2b Fc Tag, low endotoxin on SDS-PAGE under reducing (R) condition. The gel was stained overnight with Coomassie Blue. The purity of the protein is greater than 95%.

Bioactivity Data



Immobilized Human LAG-3, Llama IgG2b Fc Tag, low endotoxin (Cat. No. LA3-H525c) at 2 µg/mL (100 µL/well) can bind Anti-Human LAG3 MAb with a linear range of 0.2-4 ng/mL (QC tested).

Please note that there may be a cross-reaction between anti-human IgG Fc antibodies and llama IgG Fc tag, also between anti-llama IgG Fc antibodies and human IgG Fc tag.