

Human CD30 / TNFRSF8 Protein, Llama IgG2b Fc Tag, low endotoxin

Catalog # TN8-H5250

For Research Use Only

Description

Source Human CD30, Llama IgG2b Fc Tag, low endotoxin (TN8-H5250) is expressed from human 293 cells (HEK293). It contains AA Phe 19 - Lys 379 (Accession # NP_001234.2). Predicted N-terminus: Phe 19

Predicted N-terminus Phe 19

Protein Structure

CD30(Phe 19 - Lys 379)
NP_001234.2

LlamaFc(Glu1 - Ser243)
AAX73259.1

Molecular Characterization This protein carries a llama IgG2b Fc tag at the C-terminus. The protein has a calculated MW of 66.3 kDa. The protein migrates as 95-120 kDa under reducing (R) condition (SDS-PAGE) due to glycosylation.

Endotoxin Less than 0.01 EU per µg by the LAL method.

Purity >95% as determined by SDS-PAGE.

Bioactivity Measured by its binding ability in a functional ELISA. Immobilized Human CD30, Llama IgG2b Fc Tag, low endotoxin (Cat. No. TN8-H5250) at 0.5 µg/mL (100 µL/well) can bind Anti-CD30 Mab, Human IgG1 with a linear range of 0.1-1.6 ng/mL (Routinely tested). Measured by its binding ability in a functional ELISA. Immobilized Human CD30 Ligand, Mouse IgG2a Fc Tag, low endotoxin (Cat. No. CDL-H525b) at 0.5 µg/mL (100 µL/well) can bind Human CD30, Llama IgG2b Fc Tag, low endotoxin (Cat. No. TN8-H5250) with a linear range of 10-78 ng/mL (QC tested).

Formulation and Storage

Formulation Lyophilized from 0.22 µm filtered solution in 50 mM Tris, 100 mM Glycine, pH7.5. Normally trehalose is added as protectant before lyophilization.

Contact us for customized product form or formulation.

Reconstitution Please see Certificate of Analysis for specific instructions. For best performance, we strongly recommend you to follow the reconstitution protocol provided in the CoA.

Storage For long term storage, the product should be stored at lyophilized state at -20°C or lower. Please avoid repeated freeze-thaw cycles.

No activity loss was observed after storage at:

- 4-8°C for 12 months in lyophilized state;
- -70°C for 3 months under sterile conditions after reconstitution.

Background

Background Human CD30 is also known as TNFRSF8, is a cell membrane protein of the tumor necrosis factor receptor family and tumor marker. TNFRSF-8 is expressed by activated, but not by resting, T and B cells. Also, CD30 is expressed on classical Hodgkin Lymphoma cells together with CD15. CD30 is the receptor for TNFSF8/CD30L. CD30 can interact with TRAF2 and TRAF5, and mediate the signal transduction that leads to the activation of NF-kappa-B. TNFRSF8 may play a role in the regulation of cellular growth and transformation of activated lymphoblasts. TNFRSF8 is a positive regulator of apoptosis, and also has been shown to limit the proliferative potential of autoreactive CD8 effector T cells and protect the body against autoimmunity.

- References**
- (1) Gorczyca W., et al., 2003, Int. J. Oncol. 22 (2): 319-324.
 - (2) Aizawa S., et al., 1997, J. Biol. Chem. 272 (4): 2042-2045.
 - (3) Ansieau S., 1996, Proc. Natl. Acad. Sci. U.S.A. 93 (24): 14053-14058.
 - (4) Lee S.Y., et al., 1996, J. Exp. Med. 183:669-674.

Please contact us at TechSupport@acrobiosystems.com, if you have any questions about this product.

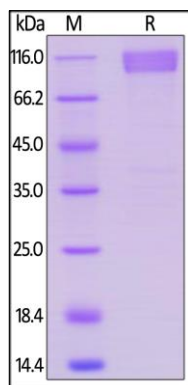
Human CD30 / TNFRSF8 Protein, Llama IgG2b Fc Tag, low endotoxin

Catalog # TN8-H5250

For Research Use Only

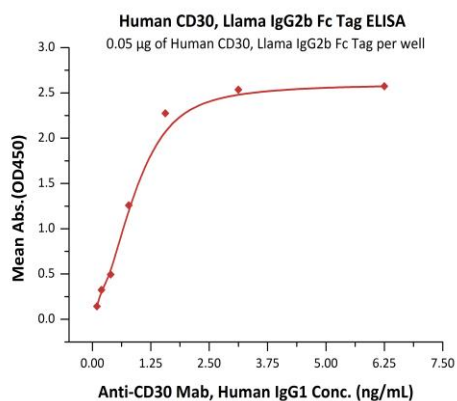
Assay Data

SDS-PAGE Data

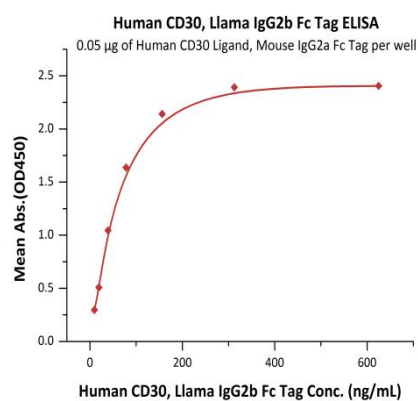


Human CD30, Llama IgG2b Fc Tag, low endotoxin on SDS-PAGE under reducing (R) condition. The gel was stained overnight with Coomassie Blue. The purity of the protein is greater than 95%.

Bioactivity Data-1



Bioactivity Data-2



Immobilized Human CD30, Llama IgG2b Fc Tag, low endotoxin (Cat. No. TN8-H5250) at 0.5 µg/mL (100 µL/well) can bind Anti-CD30 Mab, Human IgG1 with a linear range of 0.1-1.6 ng/mL (Routinely tested).

Immobilized Human CD30 Ligand, Mouse IgG2a Fc Tag, low endotoxin (Cat. No. CDL-H525b) at 0.5 µg/mL (100 µL/well) can bind Human CD30, Llama IgG2b Fc Tag, low endotoxin (Cat. No. TN8-H5250) with a linear range of 10-78 ng/mL (QC tested).

Please note that there may be a cross-reaction between anti-human IgG Fc antibodies and llama Ig Fc tag, also between anti-llama IgG Fc antibodies and human IgG Fc tag.