

Human BCMA / TNFRSF17 Protein, Llama IgG2b Fc Tag, low endotoxin

Catalog # BCA-H5259

For Research Use Only

Description

Source Human BCMA, Llama IgG2b Fc Tag (BCA-H5259) is expressed from human 293 cells (HEK293). It contains AA Met 1 - Ala 54 (Accession # Q02223-1). Predicted N-terminus: Met 1

Predicted N-terminus Met 1

Protein Structure

BCMA (Met 1 – Ala 54)
Q02223-1

Llama Fc (Glu 1 – Ser 243)
AAX73259.1

Molecular Characterization This protein carries a llama IgG2b Fc tag at the C-terminus. The protein has a calculated MW of 33.7 kDa. The protein migrates as 40-47 kDa under reducing (R) condition (SDS-PAGE) due to glycosylation.

Endotoxin Less than 0.01 EU per µg by the LAL method.

Purity >90% as determined by SDS-PAGE.

Bioactivity Measured by its binding ability in a functional ELISA. Immobilized Human BAFF, His Tag (Cat. No. BAF-H5248) at 5 µg/mL (100 µL/well) can bind Human BCMA, Llama IgG2b Fc Tag (Cat. No. BCA-H5259) with a linear range of 0.02-0.4 ng/mL (QC tested). Measured by its binding ability in a functional ELISA. Immobilized Human BCMA, Llama IgG2b Fc Tag (Cat. No. BCA-H5259) at 2 µg/mL (100 µL/well) can bind Anti-Human BCMA Mab with a linear range of 0.4-3 ng/mL (Routinely tested).

Formulation and Storage

Formulation Lyophilized from 0.22 µm filtered solution in 50 mM Tris, 100 mM Glycine, pH7.5. Normally trehalose is added as protectant before lyophilization.

Contact us for customized product form or formulation.

Reconstitution Please see Certificate of Analysis for specific instructions. For best performance, we strongly recommend you to follow the reconstitution protocol provided in the CoA.

Storage For long term storage, the product should be stored at lyophilized state at -20°C or lower. Please avoid repeated freeze-thaw cycles.

No activity loss was observed after storage at:

- 4-8°C for 12 months in lyophilized state;
- -70°C for 3 months under sterile conditions after reconstitution.

Background

Background Tumor necrosis factor receptor superfamily member 17 (TNFRSF17) is also known as B-cell maturation protein (BCMA), CD antigen CD269, which is a member of the TNF-receptor superfamily. TNFRSF17 contains one TNFR-Cys repeat. TNFRSF17 is expressed in mature B-cells, but not in T-cells or monocytes. TNFRSF17 is receptor for TNFSF13B/BLyS/BAFF and TNFSF13/APRIL. TNFRSF17 promotes B-cell survival and plays a role in the regulation of humoral immunity. TNFRSF17 can activate NF-kappa-B and JNK.

References (1) Hatzoglou A., et al., 2000, J. Immunol. 165:1322-1330.
(2) Gross J.A., et al., 2000, Nature 404:995-999.
(3) Yu G., et al., 2000, Nat. Immunol. 1:252-256.

Please contact us at TechSupport@acrobiosystems.com, if you have any questions about this product.

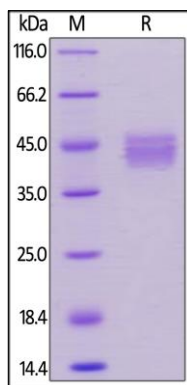
Human BCMA / TNFRSF17 Protein, Llama IgG2b Fc Tag, low endotoxin

Catalog # BCA-H5259

For Research Use Only

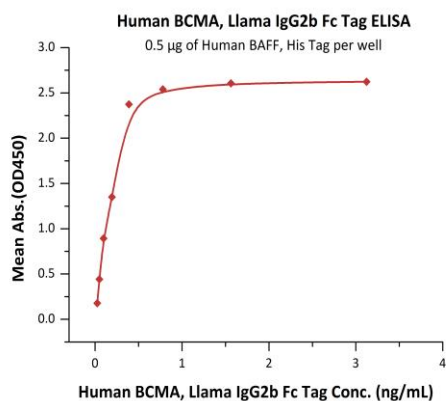
Assay Data

SDS-PAGE Data

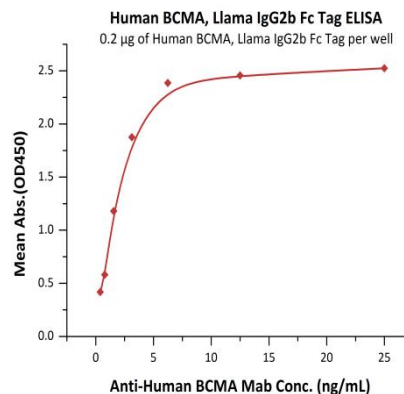


Human BCMA, Llama IgG2b Fc Tag on SDS-PAGE under reducing (R) condition. The gel was stained overnight with Coomassie Blue. The purity of the protein is greater than 90%.

Bioactivity Data-1



Bioactivity Data-2



Immobilized Human BAFF, His Tag (Cat. No. BAF-H5248) at 5 µg/mL (100 µL/well) can bind Human BCMA, Llama IgG2b Fc Tag (Cat. No. BCA-H5259) with a linear range of 0.02-0.4 ng/mL (QC tested).

Immobilized Human BCMA, Llama IgG2b Fc Tag (Cat. No. BCA-H5259) at 2 µg/mL (100 µL/well) can bind Anti-Human BCMA Mab with a linear range of 0.4-3 ng/mL (Routinely tested).

Please note that there may be a cross-reaction between anti-human IgG Fc antibodies and llama IgG Fc tag, also between anti-llama IgG Fc antibodies and human IgG Fc tag.