

# Fact Sheet

## Quick Coomassie Stain

THE 15 MINUTE SINGLE STEP STAIN - FASTER THAN LEADING COMPETITOR

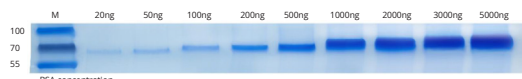
15 MIN NON-TOXIC 1 STEP

SHARP PROTEIN BANDS

USE 3 TIMES

SHELF LIFE 18 MTHS AT 2-25°C

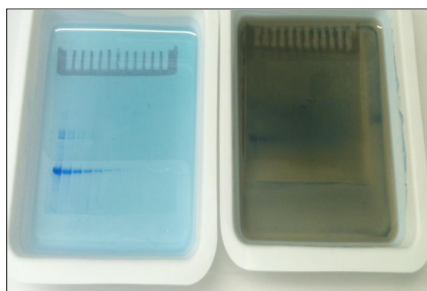
Developed and manufactured in the UK by Protein Ark, the Quick Coomassie protein stain offers unrivalled performance up to 50 times more sensitivity than other rapid stains.



Simply immerse the gel in stain (25 ml for standard mini gels) and protein bands appear after minutes. Most staining is complete within 15 minutes and fully stained after 1 hour. Store in DI water after the completion of staining. No destaining step needed, no organic solvents, no phosphoric acid, and no cloudy precipitates.

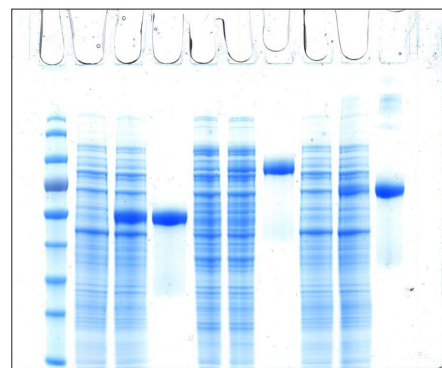
### Features

- **Rapid staining** - Protein bands appear after minutes - Fully stained after 1 hour.
- **Highly sensitive** - 5 - 25 ng bands resolved.
- **Accurate protein quantification** - Low background - Linear staining range.
- **Reusable** - Stain up to 3 gels without reduction in contrast
- **Storage** - Shelf Life 18 mths at 2-25°C



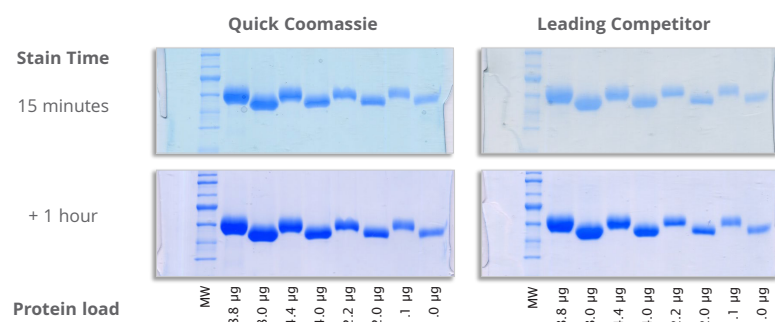
QC Stain

Leading Competitor



12% Nusep Tris-Gly gel stained with our QC Stain. Analysis of soluble bacterial lysate in the absence or presence of three different soluble proteins in comparison to the purified protein: Laminin protein fragment (lanes 2-4), Lactoferrin (lanes 5-7), and Bovine Serum Albumin (lanes 8-10).

## QC Performance



## Simple 1-Step Protocol

- Remove the gel from the cassette and place gel into container.
- Cover gel with 25 ml QC stain and leave for minimum 15 minutes or until all weak protein bands are fully developed.
- Store the gel in the QC stain overnight.

Then, either leave in QC stain or transfer to DI water for gel storage.

## Ordering Information



Product	Units	Order Code
1 Litre QC Stain	1 L	GEN-QC-STAIN-1L
3 Litre QC Stain	3 x 1 L	GEN-QC-STAIN-3L



Phone : 800.252.1280  
Fax : 419.740.6630

anatrace

customerservice@anatrace.com  
www.anatrace.com

calibre  
SCIENTIFIC