

# KF Streptococcal Agar

*For the selective isolation and enumeration of fecal enterococci by direct culture or by membrane-filtration*

## Product Description

|                         |                              |     |                 |    |
|-------------------------|------------------------------|-----|-----------------|----|
| <b>Name :</b>           | <b>KF Streptococcal Agar</b> |     |                 |    |
| <b>Catalog Number :</b> | A2WRQ0, 500 g                |     |                 |    |
| <b>Formula in g/l :</b> | Bacteriological agar         | 20  | Lactose         | 1  |
|                         | Maltose                      | 20  | Peptone mixture | 10 |
|                         | Sodium azide                 | 0,4 | Sodium chloride | 5  |
|                         | Sodium glycerophosphate      | 10  | Yeast extract   | 10 |

Typical formula g/L \* Adjusted and/or supplemented as required to meet performance criteria.

**Storage** 2-25°C.

## Directions for use

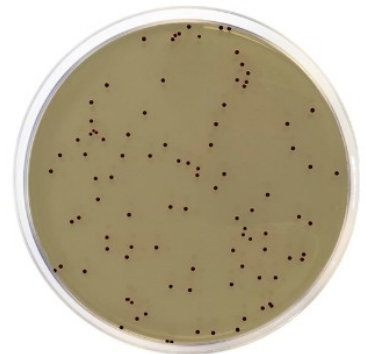
### Practical information

Applications  
Selective isolation

Categories  
Enterococci



Industry: Water / Food



### Principles and uses

KF Streptococcal Agar is a selective medium for the isolation and enumeration of fecal enterococci in water, foodstuffs and other materials, according to the formula developed by Kenner, Clark and Kabler.

It is used for the plate count of enterococci in water samples and for determining the presence of *Enterococcus faecalis* in milk and its derivatives, as well as in other foods. The isolation and enumeration of fecal enterococci is made according to APHA for the examination of water (1998) and foodstuffs (1992).

Peptone mixture provides nitrogen, vitamins, minerals and amino acids essential for growth. Yeast extract is a source of vitamins, particularly of the B-group. Maltose and Lactose are the fermentable carbohydrates as carbon and energy sources. Sodium glycerophosphate is a buffering agent. Sodium azide is a selective agent that inhibits Gram-negative bacteria. Sodium chloride supplies essential electrolytes for transport and osmotic balance. Bacteriological agar is the solidifying agent.

The addition of TTC 1% Supplement (2,3,5-trypheyltetrazolium-chloride) allows fecal enterococci to develop a red color as the result of the reduction of tetrazolium to formazan, an insoluble red pigment, by actively growing microbial cells.

FT-A2WRQ0

## Preparation

Suspend 76,4 grams of the medium in one liter of distilled water. Mix well and dissolve by heating with frequent agitation. Boil for one minute until complete dissolution. AVOID OVERHEATING. DO NOT AUTOCLAVE. Cool to 45-50 °C and aseptically add two vials of TTC 1% Supplement (Cat. A2WYB0). Homogenize gently and dispense into Petri dishes.

## Instructions for use

Pour plate method:

- Place selected dilution of sample in Petri Dish.
- Pour 15 ml of prepared medium at 45 °C into each plate.
- Thoroughly mix and allow agar to solidify.
- Incubate plates in inverted position at 35±2 °C for 46–48 hours.

Membrane filter technique:

- Filter suitable volume of sample through sterile membrane.
- Place membrane filter, inoculum side up, on solidified agar in Petri dish.
- Incubate inverted plates at 35±2 °C for 46-48 hours.

The red or pink colonies are counted as fecal enterococci, while colonies with orange, yellow, white or other colors are not counted. The number of fecal enterococci is calculated per 100 ml of water.

## Quality control

| <u>Solubility</u> | <u>Appearance</u> | <u>Color of the dehydrated medium</u> | <u>Color of the prepared medium</u> | <u>Final pH (25°C)</u> |
|-------------------|-------------------|---------------------------------------|-------------------------------------|------------------------|
| w/o rests         | Fine powder       | Beige                                 | Clear amber with a pink tint        | 7,2±0,2                |

## Microbiological test

Incubation conditions: (35±2 °C / 46-48 h ).

| <b>Microorganisms</b>        |            | <b>Specification</b> | <b>Characteristic reaction</b> |
|------------------------------|------------|----------------------|--------------------------------|
| <i>Klebsiella aerogenes</i>  | ATCC 13048 | Inhibited growth     |                                |
| <i>Enterococcus faecalis</i> | ATCC 19433 | Good growth          | Red colony                     |
| <i>Escherichia coli</i>      | ATCC 25922 | Inhibited growth     |                                |
| <i>Enterococcus faecalis</i> | ATCC 29212 | Good growth          | Red colony                     |

## References

Ramos Cordova, Mario. "Manual of Methods of Milk and Lactose Analysis". Edition of Author, Mexico, D. F., 1976. Kenner, Clark and Kabler, Applied Microbiol. 9:15. 1961.

Donnelly C.W., R.E. Bracket, D.Doores, W.H. Lee, and J. Lovett. 1992. Compendium of methods for the microbiological examination of foods, 3rd ed. American Public Health Association, Washington, D.C

## Ordering information

Catalog size quantities and prices may be found at <http://www.interchim.com>.

For any information, please ask : Uptima / Interchim; Hotline : +33(0)4 70 03 73 06

[Order on-line](#) or [Contact](#) your local distributor

**Disclaimer :** Materials from Uptima are sold **for research use only**, and are not intended for food, drug, household, or cosmetic uses.

Uptima is not liable for any damage resulting from handling or contact with this product.