

Prostaglandin E₂ EIA Kit - Monoclonal

Item No. 514010



TABLE OF CONTENTS

GENERAL INFORMATION	3 Materials Supplied
	4 Precautions
	4 If You Have Problems
	4 Storage and Stability
	5 Materials Needed but Not Supplied
INTRODUCTION	6 Background
	6 About This Assay
	8 Description of ACE™ Competitive EIAs
	9 Biochemistry of Acetylcholinesterase
	11 Definition of Key Terms
PRE-ASSAY PREPARATION	12 Buffer Preparation
	13 Sample Preparation
ASSAY PROTOCOL	19 Preparation of Assay-Specific Reagents
	21 Plate Set Up
	22 Performing the Assay
ANALYSIS	25 Calculations
	27 Performance Characteristics
RESOURCES	31 Troubleshooting
	32 Additional Reading
	32 References
	33 Related Products
	34 Warranty and Limitation of Remedy
	35 Plate Template
	36 Notes

GENERAL INFORMATION

Materials Supplied

Item Number	Item	96 wells Quantity/Size	480 wells Quantity/Size
414013	Prostaglandin E ₂ Monoclonal Antibody	1 vial/100 dtn	1 vial/500 dtn
414010	Prostaglandin E ₂ AChE Tracer	1 vial/100 dtn	1 vial/500 dtn
414014	Prostaglandin E ₂ EIA Standard	1 vial	1 vial
400060	EIA Buffer Concentrate (10X)	2 vials/10 ml	4 vials/10 ml
400062	Wash Buffer Concentrate (400X)	1 vial/5 ml	1 vial/12.5 ml
400035	Polysorbate 20	1 vial/3 ml	1 vial/3 ml
400008/400009	Goat Anti-Mouse IgG Coated Plate	1 plate	5 plates
400012	96-Well Cover Sheet	1 cover	5 covers
400050	Ellman's Reagent	3 vials/100 dtn	6 vials/250 dtn
400040	EIA Tracer Dye	1 vial	1 vial
400042	EIA Antiserum Dye	1 vial	1 vial

If any of the items listed above are damaged or missing, please contact our Customer Service department at (800) 364-9897 or (734) 975-3999. We cannot accept any returns without prior authorization.



WARNING: This product is for laboratory research use only: not for administration to humans. Not for human or veterinary diagnostic or therapeutic use.

Precautions

Please read these instructions carefully before beginning this assay.

The reagents in this kit have been tested and formulated to work exclusively with Cayman Chemical's ACE™ EIA Kits. This kit may not perform as described if any reagent or procedure is replaced or modified.

For research use only. Not for human or diagnostic use.

When compared to quantification by LC/MS or GC/MS, it is not uncommon for immunoassays to report higher analyte concentrations. While LC/MS or GC/MS analyses typically measure only a single compound, antibodies used in immunoassays sometimes recognize not only the target molecule, but also structurally related molecules, including biologically relevant metabolites. In many cases, measurement of both the parent molecule and metabolites is more representative of the overall biological response than is the measurement of a short-lived parent molecule. It is the responsibility of the researcher to understand the limits of both assay systems and to interpret their data accordingly.

If You Have Problems

Technical Service Contact Information

Phone: 888-526-5351 (USA and Canada only) or 734-975-3888
Fax: 734-971-3641
Email: techserv@caymanchem.com
Hours: M-F 8:00 AM to 5:30 PM EST

In order for our staff to assist you quickly and efficiently, please be ready to supply the lot number of the kit (found on the outside of the box).

Storage and Stability

This kit will perform as specified if stored as directed at -20°C and used before the expiration date indicated on the outside of the box.

Materials Needed But Not Supplied

1. A plate reader capable of measuring absorbance between 405-420 nm.
2. Adjustable pipettes and a repeat pipettor.
3. A source of 'UltraPure' water. Water used to prepare all EIA reagents and buffers must be deionized and free of trace organic contaminants ('UltraPure'). Use activated carbon filter cartridges or other organic scavengers. Glass distilled water (even if double distilled), HPLC-grade water, and sterile water (for injections) are not adequate for EIA. *NOTE: UltraPure water is available for purchase from Cayman (Item No. 400000).*
4. Materials used for **Sample Preparation** (see page 13).

INTRODUCTION

Background

Prostaglandin E₂ (PGE₂) is a primary product of arachidonic acid metabolism in many cells. Like most eicosanoids, it does not exist preformed in any cellular reservoir. When cells are activated or exogenous free arachidonate is supplied, PGE₂ is synthesized *de novo* and released into the extracellular space. *In vivo*, PGE₂ is rapidly converted to an inactive metabolite (13,14-dihydro-15-keto PGE₂) by the PG 15-dehydrogenase pathway.^{1,2} The half-life of PGE₂ in the circulatory system is approximately 30 seconds and normal plasma levels are 3-12 pg/ml.³

Because of the rapid metabolism of PGE₂, the determination of *in vivo* PGE₂ biosynthesis is often best accomplished by the measurement of PGE₂ metabolites. Our PGE Metabolite Assay Kit (Item No. 514531) converts all major PGE₂ metabolites into a single stable derivative which is easily measurable by EIA (see Figure 1, on page 7). Proper sample handling and preparation is the most important aspect of this assay. *NOTE: Please read the section of this booklet on sample preparation carefully before beginning.*

About This Assay

Cayman's PGE₂ EIA Kit - Monoclonal is a competitive assay that can be used for quantification of PGE₂ in urine, plasma, tissue culture supernatants, and other sample matrices. The EIA typically displays an IC₅₀ (50% B/B₀) of approximately 50 pg/ml and a detection limit (80% B/B₀) of approximately 15 pg/ml.

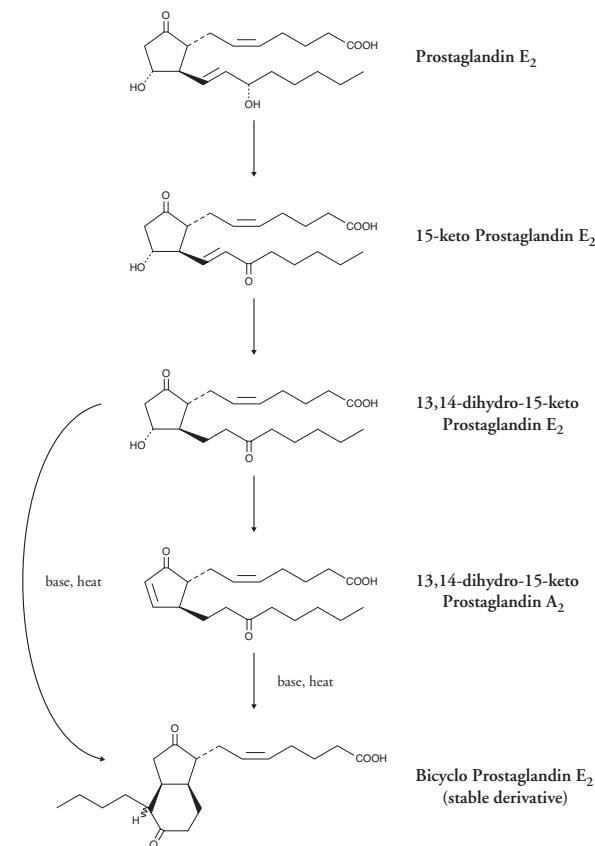


Figure 1. Metabolism of PGE₂

Description of ACE™ Competitive EIAs

This assay is based on the competition between PGE₂ and a PGE₂-acetylcholinesterase (AChE) conjugate (PGE₂ Tracer) for a limited amount of PGE₂ Monoclonal Antibody. Because the concentration of the PGE₂ Tracer is held constant while the concentration of PGE₂ varies, the amount of PGE₂ Tracer that is able to bind to the PGE₂ Monoclonal Antibody will be inversely proportional to the concentration of PGE₂ in the well. This antibody-PGE₂ complex binds to goat polyclonal anti-mouse IgG that has been previously attached to the well. The plate is washed to remove any unbound reagents and then Ellman's Reagent (which contains the substrate to AChE) is added to the well. The product of this enzymatic reaction has a distinct yellow color and absorbs strongly at 412 nm. The intensity of this color, determined spectrophotometrically, is proportional to the amount of PGE₂ Tracer bound to the well, which is inversely proportional to the amount of free PGE₂ present in the well during the incubation; or

$$\text{Absorbance} \propto [\text{Bound PGE}_2 \text{ Tracer}] \propto 1/[\text{PGE}_2]$$

A schematic of this process is shown in Figure 2, below.

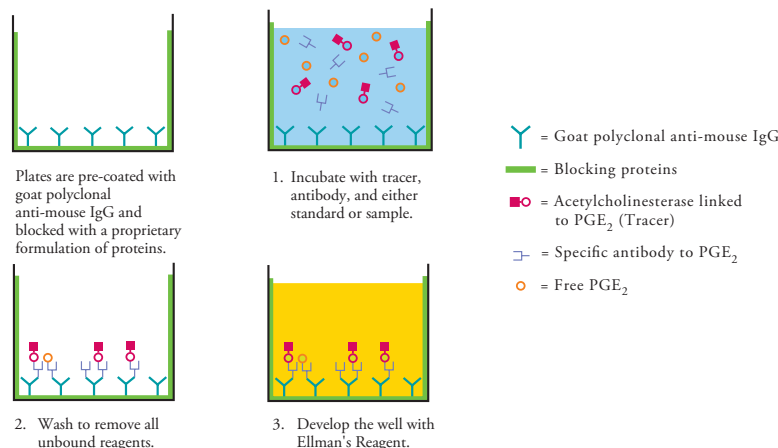


Figure 2. Schematic of the ACE™ EIA

Biochemistry of Acetylcholinesterase

The electric organ of the electric eel, *Electrophorus electricus*, contains an avid acetylcholinesterase (AChE) capable of massive catalytic turnover during the generation of its electrochemical discharges. The electric eel AChE has a clover leaf-shaped tertiary structure consisting of a triad of tetramers attached to a collagen-like structural fibril. This stable enzyme is capable of high turnover (64,000 s⁻¹) for the hydrolysis of acetylthiocholine.

A molecule of the analyte covalently attached to a molecule of AChE serves as the tracer in ACE™ enzyme immunoassays. Quantification of the tracer is achieved by measuring its AChE activity with Ellman's Reagent. This reagent consists of acetylthiocholine and 5,5'-dithio-*bis*-(2-nitrobenzoic acid). Hydrolysis of acetylthiocholine by AChE produces thiocholine (see Figure 3, on page 10). The non-enzymatic reaction of thiocholine with 5,5'-dithio-*bis*-(2-nitrobenzoic acid) produces 5-thio-2-nitrobenzoic acid, which has a strong absorbance at 412 nm ($\epsilon = 13,600$).

AChE has several advantages over other enzymes commonly used for enzyme immunoassays. Unlike horseradish peroxidase, AChE does not self-inactivate during turnover. This property of AChE also allows re-development of the assay if it is accidentally splashed or spilled. In addition, the enzyme is highly stable under the assay conditions, has a wide pH range (pH 5-10), and is not inhibited by common buffer salts or preservatives. Since AChE is stable during the development step, it is unnecessary to use a 'stop' reagent, and the plate may be read whenever it is convenient.

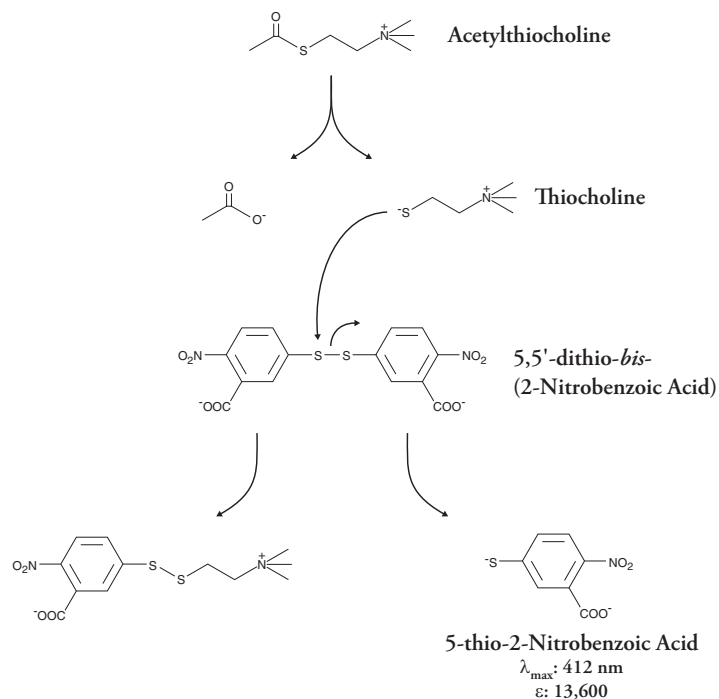


Figure 3. Reaction catalyzed by acetylcholinesterase

Definition of Key Terms

Blank: background absorbance caused by Ellman's Reagent. The blank absorbance should be subtracted from the absorbance readings of all the other wells.

Total Activity: total enzymatic activity of the AChE-linked tracer. This is analogous to the specific activity of a radioactive tracer.

NSB (Non-Specific Binding): non-immunological binding of the tracer to the well. Even in the absence of specific antibody a very small amount of tracer still binds to the well; the NSB is a measure of this low binding.

B_0 (Maximum Binding): maximum amount of the tracer that the antibody can bind in the absence of free analyte.

%B/ B_0 (%Bound/Maximum Bound): ratio of the absorbance of a particular sample or standard well to that of the maximum binding (B_0) well.

Standard Curve: a plot of the %B/ B_0 values *versus* concentration of a series of wells containing various known amounts of analyte.

Dtn: determination, where one dtn is the amount of reagent used per well.

PRE-ASSAY PREPARATION

NOTE: Water used to prepare all EIA reagents and buffers must be deionized and free of trace organic contaminants ('UltraPure'). Use activated carbon filter cartridges or other organic scavengers. Glass distilled water (even if double distilled), HPLC-grade water, and sterile water (for injections) are not adequate for EIA. UltraPure water may be purchased from Cayman (Item No. 400000).

Buffer Preparation

Store all diluted buffers at 4°C; they will be stable for about two months

1. EIA Buffer Preparation

Dilute the contents of one vial of EIA Buffer Concentrate (10X) (Item No. 400060) with 90 ml of UltraPure water. Be certain to rinse the vial to remove any salts that may have precipitated. *NOTE: It is normal for the concentrated buffer to contain crystalline salts after thawing. These will completely dissolve upon dilution with water.*

2. Wash Buffer Preparation

5 ml vial Wash Buffer Concentrate (400X) (96-well kit; Item No. 400062):
Dilute to a total volume of 2 liters with UltraPure water and add 1 ml of Polysorbate 20 (Item No. 400035).

OR

12.5 ml vial Wash Buffer Concentrate (400X) (480-well kit; Item No. 400062):
Dilute to a total volume of 5 liters with UltraPure water and add 2.5 ml of Polysorbate 20 (Item No. 400035).

Smaller volumes of Wash Buffer can be prepared by diluting the Wash Buffer Concentrate 1:400 and adding Polysorbate 20 (0.5 ml/liter of Wash Buffer).

NOTE: Polysorbate 20 is a viscous liquid and cannot be measured by a regular pipette. A positive displacement pipette or a syringe should be used to deliver small quantities accurately.

Sample Preparation

This assay has been validated for a wide range of samples including urine, plasma, and tissue culture media (see Figure 4, on page 14). Proper sample storage and preparation are essential for consistent and accurate results. Please read this section thoroughly before beginning the assay.

General Precautions

- All samples must be free of organic solvents prior to assay.
- Samples should be assayed immediately after collection; samples that cannot be assayed immediately should be stored at -80°C.
- Samples of mouse and rat origin may contain antibodies which interfere with the assay by binding to the goat anti-mouse plate. We recommend that all mouse and rat samples be purified prior to use in this assay.

Urine

Since interference in urine is infrequent, dilutions of 1:2 and greater show a direct linear correlation between PGE₂ immunoreactivity and PGE₂ concentration. However, the amount of PGE₂ in normal urine is very low in comparison with other potentially immunoreactive metabolites.² A more accurate index of PGE₂ biosynthesis and excretion can be obtained using our PGE Metabolite EIA Kit (Item No. 514531).

Plasma

Collect blood in vacutainers containing heparin, EDTA, or sodium citrate. Indomethacin should be added immediately after whole blood collection (sufficient to give a 10 µM final concentration). Indomethacin will prevent *ex vivo* formation of eicosanoids, which have the potential to interfere with this assay (although most eicosanoids do not appear to exhibit any cross-reactivity (see page 31)).

The amount of PGE₂ in normal plasma is very low in comparison with other potentially immunoreactive metabolites.² In addition, plasma is a complex matrix that contains many substances that can interfere with this assay and therefore sample purification is recommended. By purifying a large volume of sample (5-10 ml), the PGE₂ content can be concentrated into as little as 0.5 ml of EIA Buffer. This will bring the PGE₂ concentration into the readable range of the standard curve. A more accurate index of PGE₂ biosynthesis in plasma can be obtained using our PGE Metabolite EIA Kit (Item No. 514531).

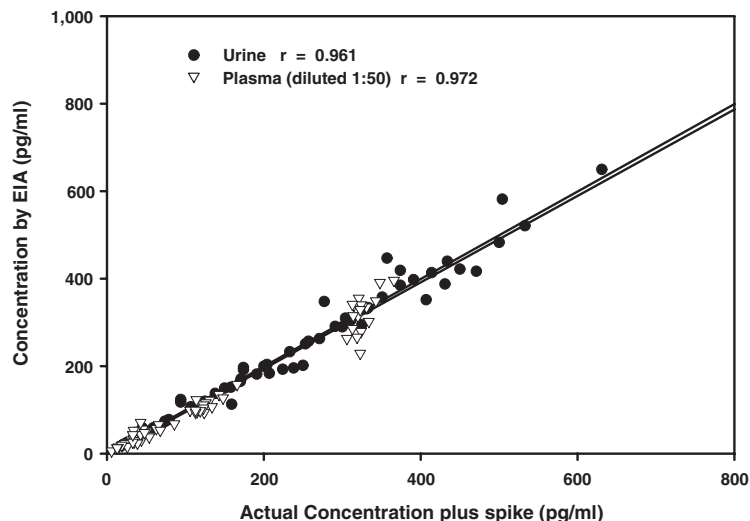


Figure 4. Validation curves for this PGE₂ assay

Culture Medium Samples

Cell culture supernatants may be assayed directly without purification. If the PGE₂ concentration in the medium is high enough to dilute the sample 10-fold with EIA Buffer, the assay can be performed without any modifications. When assaying less concentrated samples (where samples cannot be diluted with EIA Buffer), dilute the standard curve in the same culture medium as that used in the experiment. This will ensure that the matrix for the standards is comparable to the samples. We recommend that a standard curve be run first to ensure that the assay will perform in a particular culture medium.

Tissue Samples

Snap-freeze tissues in liquid nitrogen immediately upon collection and then store at -80°C. Add 5 ml homogenization buffer (0.1 M phosphate, pH 7.4, containing 1 mM EDTA and 10 µM indomethacin) to 1 g of tissue. Homogenize the sample with either a Polytron-type homogenizer or a sonicator. Proceed to the purification section below. Alternatively, frozen samples can be pulverized in the presence of ethanol for extraction of PGE₂.⁴

Tissue Homogenization using the Precellys 24 Homogenizer

Snap-freeze tissues in liquid nitrogen immediately upon collection and store at -80°C. Add 1 ml homogenization buffer (0.1 M phosphate buffer, pH 7.4, containing 1 mM EDTA and 10 µM indomethacin) per 100 mg of tissue. Homogenize the sample with the Precellys 24 using the appropriate settings (see Table 1). Spin the tissue homogenates at 8,000 x g for 10 minutes. Collect supernatant and assay as described below. Samples will need to be diluted appropriately for the assay. Tissue samples should be normalized using a protein assay. Cayman's Protein Determination Kit (Item No. 704002) may be used to normalize protein samples.

Organ	Speed (rpm)	Cycle Length (seconds)	Beads
Lung	5,200	20	CK28 Large Ceramic (Item No. 10011151)
Brain	5,500	20	CK28 Large Ceramic (Item No. 10011151)
Liver	5,200	15	CK28 Large Ceramic (Item No. 10011151)
Kidney	5,200	20	CK14 Small Ceramic (Item No. 10011152)
Heart	5,200	30	CK14 Small Ceramic (Item No. 10011152)

Table 1. Precellys settings

Testing for Interference

Plasma, serum, as well as other heterogeneous mixtures such as CSF often contain contaminants which can interfere in the assay. It is best to check for interference to evaluate the need for sample purification before embarking on a large number of sample measurements. To test for interference, dilute one or two test samples to obtain at least two different dilutions of each sample between 10 and 250 pg/ml (*i.e.*, between 20-80% B/B₀). If the two different dilutions of the sample show good correlation (differ by 20% or less) in the final calculated PGE₂ concentration, purification is not required. If you do not see good correlation of the different dilutions, purification is advised.

SPE (C-18) Purification Protocol

The following protocol is a suggestion only. You may choose a different protocol based on your own requirements, sample type, and expertise. If desired, recovery may be tracked by spiking samples with tritium-labeled PGE₂ ([³H]-PGE₂) and follow the spiked-sample recovery calculations in the **Analysis** section on page 26. Otherwise, omit steps 2 and 11.

Materials Needed

1. Tritium-labeled PGE₂ (optional)
2. 1 M acetate buffer, deionized water, ethanol, methanol, and ethyl acetate
3. 500 mg SPE Cartridges (C-18) (Item No. 400020)

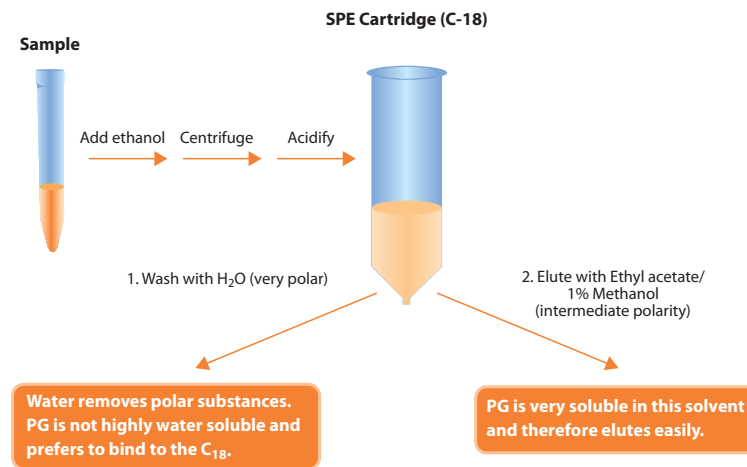


Figure 5. Schematic of PGE₂ Purification by SPE (C-18)

1. Aliquot a known amount of each sample into a clean test tube (500 μ l is recommended). If your samples need to be concentrated, a larger volume should be used (e.g., a 5 ml sample will be concentrated by a factor of 10, a 10 ml sample will be concentrated by a factor of 20, etc.).
2. Add 10,000 cpm of tritium-labeled PGE₂ ([³H]-PGE₂). Use a high specific activity tracer to minimize the amount of radioactive PGE₂ as the EIA will be able to detect the added PGE₂.
3. *Precipitation of proteins using ethanol is optional and may not be needed if samples are clean enough to flow through the SPE Cartridge (C-18). Body fluids such as plasma and urine can typically be applied directly to the SPE Cartridge (C-18) after the acidification step (step 4) below.* To precipitate proteins, add ethanol (approximately four times the sample volume) to each tube. Vortex to mix thoroughly. Incubate samples at 4°C for five minutes, then centrifuge a 3,000 x g for 10 minutes to remove precipitated proteins. Transfer the supernatant to a clean test tube. Evaporate the ethanol under nitrogen.
4. Acidify the sample to ~pH 4.0 by the addition of 1 M acetate buffer (or citrate buffer). (Standardize the pH adjustment using the sample matrix prior to proceeding with a large number of samples). If the samples are cloudy or contain precipitate, either filter or centrifuge to remove the precipitate. Particulate matter in the sample may clog the SPE Cartridge (C-18).
5. Prepare SPE (C-18) columns by rinsing with 5 ml methanol followed by 5 ml deionized water. Do not allow the SPE Cartridge (C-18) to dry.
6. Apply the sample to the SPE Cartridge (C-18) and allow the sample to completely enter the packing material.
7. Wash the column with 5 ml deionized water. Discard the wash.
8. Elute the PGE₂ from the column with 5 ml ethyl acetate containing 1% methanol. Higher recovery and better reproducibility may be obtained if the sample is applied and eluted by gravity. The wash steps may be performed under vacuum or pressure.
9. Evaporate the ethyl acetate to dryness under a stream of nitrogen. It is very important that all of the organic solvent be removed as even small quantities will adversely affect the EIA.
10. To resuspend the sample, add 500 μ l EIA Buffer. Vortex. It is common for insoluble precipitate to remain in the sample after addition of EIA Buffer; this will not affect the assay. This sample is now ready for use in the EIA.
11. Use 50 μ l of the resuspended sample for scintillation counting.

ASSAY PROTOCOL

Preparation of Assay-Specific Reagents

Prostaglandin E₂ EIA Standard

Reconstitute the contents of the PGE₂ EIA Standard (Item No. 414014) with 1.0 ml of EIA Buffer. The concentration of this solution (the bulk standard) will be 10 ng/ml. Stored at 4°C; this standard will be stable for up to 4 weeks.

NOTE: If assaying culture medium samples that have not been diluted with EIA Buffer, culture medium should be used in place of EIA Buffer for dilution of the standard curve.

To prepare the standard for use in EIA: Obtain eight clean test tubes and number them #1 through #8. Aliquot 900 μ l EIA Buffer to tube #1 and 500 μ l EIA Buffer to tubes #2-8. Transfer 100 μ l of the bulk standard (10 ng/ml) to tube #1 and mix thoroughly. The concentration of this standard, the first point on the standard curve, will be 1 ng/ml (1,000 pg/ml). Serially dilute the standard by removing 500 μ l from tube #1 and placing in tube #2; mix thoroughly. Next, remove 500 μ l from tube #2 and place it into tube #3; mix thoroughly. Repeat this process for tubes #4-8. These diluted standards should not be stored for more than 24 hours.

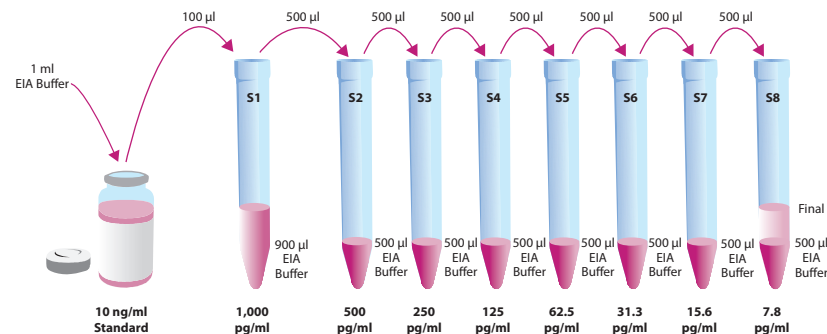


Figure 6. Preparation of the PGE₂ standards

Prostaglandin E₂ AChE Tracer

Reconstitute the PGE₂ AChE Tracer as follows:

100 dtn PGE₂ AChE Tracer (96-well kit; Item No. 414010): Reconstitute with 6 ml EIA Buffer.

OR

500 dtn PGE₂ AChE Tracer (480-well kit; Item No. 414010): Reconstitute with 30 ml EIA Buffer.

Store the reconstituted PGE₂ AChE Tracer at 4°C (*do not freeze!*) and use within four weeks. A 20% surplus of tracer has been included to account for any incidental losses.

Tracer Dye Instructions (optional)

This dye may be added to the tracer, if desired, to aid in visualization of tracer-containing wells. Add the dye to the reconstituted tracer at a final dilution of 1:100 (add 60 µl of dye to 6 ml tracer or add 300 µl of dye to 30 ml of tracer).

Prostaglandin E₂ Monoclonal Antibody

Reconstitute the PGE₂ Monoclonal Antibody as follows:

100 dtn PGE₂ Monoclonal Antibody (96-well kit; Item No. 414013): Reconstitute with 6 ml EIA Buffer.

OR

500 dtn PGE₂ Monoclonal Antibody (480-well kit; Item No. 414013): Reconstitute with 30 ml EIA Buffer.

Store the reconstituted PGE₂ Monoclonal Antibody at 4°C. It will be stable for at least four weeks. A 20% surplus of antibody has been included to account for any incidental losses.

Antiserum Dye Instructions (optional)

This dye may be added to the antibody, if desired, to aid in visualization of antibody-containing wells. Add the dye to the reconstituted antibody at a final dilution of 1:100 (add 60 µl of dye to 6 ml antibody or add 300 µl of dye to 30 ml of antibody).

Plate Set Up

The 96-well plate(s) included with this kit is supplied ready to use. It is not necessary to rinse the plate(s) prior to adding the reagents. *NOTE: If you do not need to use all the strips at once, place the unused strips back in the plate packet and store at 4°C. Be sure the packet is sealed with the desiccant inside.*

Each plate or set of strips must contain a minimum of two blanks (Blk), two non-specific binding wells (NSB), two maximum binding wells (B₀), and an eight point standard curve run in duplicate. *NOTE: Each assay must contain this minimum configuration in order to ensure accurate and reproducible results.* Each sample should be assayed at two dilutions and each dilution should be assayed in duplicate. For statistical purposes, we recommend assaying samples in triplicate.

A suggested plate format is shown in Figure 7, below. The user may vary the location and type of wells present as necessary for each particular experiment. The plate format provided below has been designed to allow for easy data analysis using a convenient spreadsheet offered by Cayman (see page 25, for more details). We suggest you record the contents of each well on the template sheet provided (see page 35).

	1	2	3	4	5	6	7	8	9	10	11	12
A	Blk	S1	S1	1	1	1	9	9	9	17	17	17
B	Blk	S2	S2	2	2	2	10	10	10	18	18	18
C	NSB	S3	S3	3	3	3	11	11	11	19	19	19
D	NSB	S4	S4	4	4	4	12	12	12	20	20	20
E	B ₀	S5	S5	5	5	5	13	13	13	21	21	21
F	B ₀	S6	S6	6	6	6	14	14	14	22	22	22
G	B ₀	S7	S7	7	7	7	15	15	15	23	23	23
H	TA	S8	S8	8	8	8	16	16	16	24	24	24

Blk - Blank
TA - Total Activity
NSB - Non-Specific Binding
B₀ - Maximum Binding
S1-S8 - Standards 1-8
1-24 - Samples

Figure 7. Sample plate format

Performing the Assay

Pipetting Hints

- Use different tips to pipette each reagent.
- Before pipetting each reagent, equilibrate the pipette tip in that reagent (*i.e.*, slowly fill the tip and gently expel the contents, repeat several times).
- Do not expose the pipette tip to the reagent(s) already in the well.

Addition of the Reagents

1. EIA Buffer

Add 100 µl EIA Buffer to Non-Specific Binding (NSB) wells. Add 50 µl EIA Buffer to Maximum Binding (B₀) wells. If culture medium was used to dilute the standard curve, substitute 50 µl of culture medium for EIA Buffer in the NSB and B₀ wells (*i.e.*, add 50 µl culture medium to NSB and B₀ wells and 50 µl EIA Buffer to NSB wells).

2. Prostaglandin E₂ EIA Standard

Add 50 µl from tube #8 to both of the lowest standard wells (S8). Add 50 µl from tube #7 to each of the next two standard wells (S7). Continue with this procedure until all the standards are aliquoted. The same pipette tip should be used to aliquot all the standards. Before pipetting each standard, be sure to equilibrate the pipette tip in that standard.

3. Samples

Add 50 µl of sample per well. Each sample should be assayed at a minimum of two dilutions. Each dilution should be assayed in duplicate (triplicate recommended).

4. Prostaglandin E₂ AChE Tracer

Add 50 µl to each well *except* the Total Activity (TA) and the Blank (Blk) wells.

5. Prostaglandin E₂ Monoclonal Antibody

Add 50 µl to each well *except* the Total Activity (TA), the Non-Specific Binding (NSB), and the Blank (Blk) wells.

Well	EIA Buffer	Standard/ Sample	Tracer	Antibody
Blk	-	-	-	-
TA	-	-	5 µl (at devl. step)	-
NSB	100 µl	-	50 µl	-
B ₀	50 µl	-	50 µl	50 µl
Std/Sample	-	50 µl	50 µl	50 µl

Table 2. Pipetting summary

Incubation of the Plate

Cover each plate with plastic film (Item No. 400012) and incubate 18 hours at 4°C.

Development of the Plate

1. Reconstitute Ellman’s Reagent immediately before use (20 ml of reagent is sufficient to develop 100 wells):

100 dtn vial Ellman’s Reagent (96-well kit; Item No. 400050): Reconstitute with 20 ml of UltraPure water.

OR

250 dtn vial Ellman’s Reagent (480-well kit; Item No. 400050): Reconstitute with 50 ml of UltraPure water.

NOTE: Reconstituted Ellman’s Reagent is unstable and should be used the same day it is prepared; protect the Ellman’s Reagent from light when not in use. Extra vials of the reagent have been provided should a plate need to be re-developed or multiple assays run on different days.

2. Empty the wells and rinse five times with Wash Buffer.
3. Add 200 μ l of Ellman's Reagent to each well.
4. Add 5 μ l of tracer to the Total Activity wells.
5. Cover the plate with plastic film. Optimum development is obtained by using an orbital shaker equipped with a large, flat cover to allow the plate(s) to develop in the dark. This assay typically develops (*i.e.*, B_0 wells ≥ 0.3 A.U. (blank subtracted)) in 60-90 minutes.

Reading the Plate

1. Wipe the bottom of the plate with a clean tissue to remove fingerprints, dirt, etc.
2. Remove the plate cover being careful to keep Ellman's Reagent from splashing on the cover. *NOTE: Any loss of Ellman's Reagent will affect the absorbance readings. If Ellman's Reagent is present on the cover, use a pipette to transfer the Ellman's Reagent into the well. If too much Ellman's Reagent has splashed on the cover to easily redistribute back into the wells, wash the plate three times with wash buffer and repeat the development with fresh Ellman's Reagent.*
3. Read the plate at a wavelength between 405 and 420 nm. The absorbance may be checked periodically until the B_0 wells have reached a minimum of 0.3 A.U. (blank subtracted). The plate should be read when the absorbance of the B_0 wells are in the range of 0.3-1.0 A.U. (blank subtracted). If the absorbance of the wells exceeds 1.5, wash the plate, add fresh Ellman's Reagent and let it develop again.

ANALYSIS

Many plate readers come with data reduction software that plot data automatically. Alternatively a spreadsheet program can be used. The data should be plotted as either $\%B/B_0$ versus log concentration using a four-parameter logistic fit or as logit B/B_0 versus log concentration using a linear fit. *NOTE: Cayman has a computer spreadsheet available for data analysis. Please contact Technical Service or visit our website (www.caymanchem.com/analysis/eia) to obtain a free copy of this convenient data analysis tool.*

Calculations

Preparation of the Data

The following procedure is recommended for preparation of the data prior to graphical analysis.

NOTE: If the plate reader has not subtracted the absorbance readings of the blank wells from the absorbance readings of the rest of the plate, be sure to do that now.

1. Average the absorbance readings from the NSB wells.
2. Average the absorbance readings from the B_0 wells.
3. Subtract the NSB average from the B_0 average. This is the corrected B_0 or corrected maximum binding.
4. Calculate the B/B_0 (Sample or Standard Bound/Maximum Bound) for the remaining wells. To do this, subtract the average NSB absorbance from the S1 absorbance and divide by the corrected B_0 (from Step 3). Repeat for S2-S8 and all sample wells. (To obtain $\%B/B_0$ for a logistic four-parameter fit, multiply these values by 100.)

NOTE: The total activity (TA) values are not used in the standard curve calculations. Rather, they are used as a diagnostic tool; the corrected B_0 divided by the actual TA (10X measured absorbance) will give the % Bound. This value should closely approximate the % Bound that can be calculated from the Sample Data (see page 27). Erratic absorbance values and a low (or no) % Bound could indicate the presence of organic solvents in the buffer or other technical problems (see page 31 for Troubleshooting).

Plot the Standard Curve

Plot %B/B₀ for standards S1-S8 *versus* PGE₂ concentration using linear (y) and log (x) axes and perform a 4-parameter logistic fit.

Alternative Plot - The data can also be linerized using a logit transformation. The equation for this conversion is shown below. *NOTE: Do not use %B/B₀ in this calculation.*

logit (B/B₀) = ln [B/B₀/(1 - B/B₀)]

Plot the data as logit (B/B₀) *versus* log concentrations and perform a linear regression fit.

Determine the Sample Concentration

Calculate the B/B₀ (or %B/B₀) value for each sample. Determine the concentration of each sample using the equation obtained from the standard curve plot. *NOTE: Remember to account for any concentration or dilution of the sample prior to the addition to the well.* Samples with %B/B₀ values greater than 80% or less than 20% should be re-assayed as they generally fall out of the linear range of the standard curve. A 20% or greater disparity between the apparent concentration of two different dilutions of the same sample indicates interference which could be eliminated by purification.

Spiked-Sample Recovery Calculation

Recovery Factor = $\frac{10 \times \text{cpm of sample}}{[^3\text{H}]\text{-PGE}_2 \text{ added to sample (cpm)}}$

PGE₂ (pg) in purified sample =

$\left[\frac{\text{Value from EIA (pg/ml)}}{\text{Recovery Factor}} \right] \times 0.5 \text{ ml} - \text{added } [^3\text{H}]\text{-PGE}_2 \text{ (pg)}$

Total PGE₂ in sample (pg/ml) =

$\frac{\text{PGE}_2 \text{ (pg) in purified sample}}{\text{Volume of sample used for purification (ml)}}$

Performance Characteristics

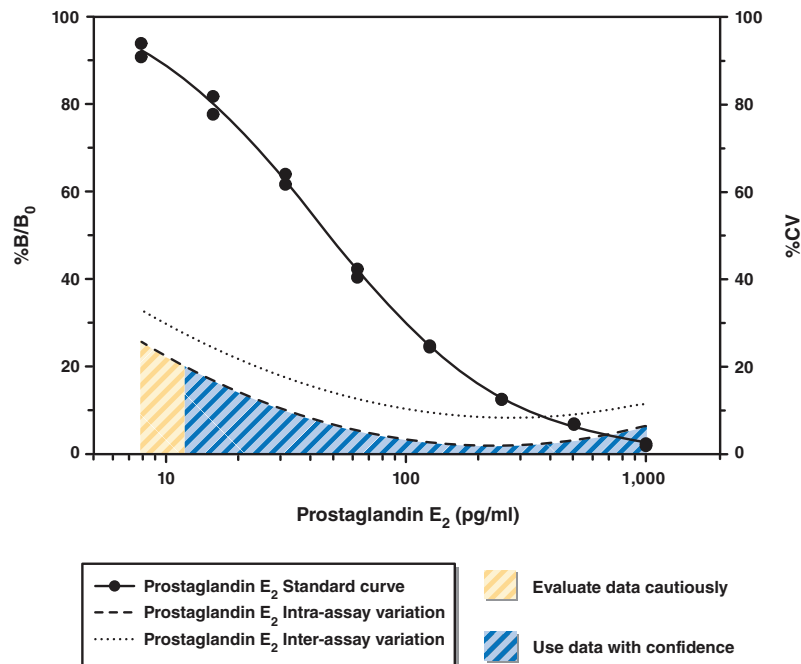
Sample Data

The standard curve presented here is an example of the data typically produced with this kit; however, your results will not be identical to these. You must run a new standard curve. Do not use the data below to determine the values of your samples. Your results could differ substantially.

	Raw Data		Average		Corrected	
Total Activity	0.689	0.692	0.691			
NSB	0.004	0.002	0.003			
B ₀	0.871	0.830				
	0.856	0.821	0.845		0.842	

Dose (pg/ml)	Raw Data		Corrected		%B/B ₀	
1,000	0.021	0.017	0.018	0.014	2.1	1.7
500	0.058	0.060	0.055	0.057	6.5	6.8
250	0.106	0.107	0.103	0.104	12.2	12.4
125	0.207	0.210	0.204	0.207	24.2	24.6
62.5	0.358	0.342	0.355	0.339	42.2	40.3
31.3	0.541	0.521	0.538	0.518	63.9	61.5
15.6	0.691	0.656	0.688	0.653	81.7	77.6
7.8	0.793	0.767	0.790	0.764	93.8	90.7

Table 3. Typical results



Precision:

The intra- and inter-assay CVs have been determined at multiple points on the standard curve. These data are summarized in the graph on page 28 and in the table below.

Dose (pg/ml)	%CV* Intra-assay variation	%CV* Inter-assay variation
1,000	4.2	12.4
500	3.9	6.4
250	3.8	7.8
125	3.7	11.6
62.5	6.6	15.5
31.3	7.8	15.0
15.6	10.1	20.9
7.8	30.4	35.0

Table 4. Intra- and inter-assay variation

*%CV represents the variation in concentration (not absorbance) as determined using a reference standard curve.

Specificity:

Compound	Cross Reactivity	Compound	Cross Reactivity
Prostaglandin E ₂	100%	tetranor-PGEM	<0.01%
Prostaglandin E ₂ Ethanolamide	100%	tetranor-PGFM	<0.01%
Prostaglandin E ₂ -1-glyceryl ester	100%	Prostaglandin A ₁	<0.01%
Prostaglandin E ₃	43%	8- <i>iso</i> Prostaglandin A ₂	<0.01%
Prostaglandin E ₁	18.7%	Prostaglandin A ₃	<0.01%
8- <i>iso</i> Prostaglandin E ₂	2.5%	Prostaglandin B ₁	<0.01%
Sulprostone	1.25%	Prostaglandin B ₂	<0.01%
6-keto Prostaglandin F _{1α}	1%	Prostaglandin D ₂	<0.01%
8- <i>iso</i> Prostaglandin F _{2α}	0.25%	11-deoxy Prostaglandin E ₂	<0.01%
Prostaglandin A ₂	0.04%	16,16-dimethyl Prostaglandin E ₂	<0.01%
13,14-dihydro-15-keto Prostaglandin E ₂	0.02%	19(R)-hydroxy Prostaglandin E ₂	<0.01%
Arachidonic Acid	<0.01%	20-hydroxy Prostaglandin E ₂	<0.01%
Arachidonoyl Ethanolamide	<0.01%	15-keto Prostaglandin E ₂	<0.01%
O-Arachidonoyl Ethanolamide	<0.01%	Prostaglandin F _{1α}	<0.01%
Butaprost	<0.01%	Prostaglandin F _{2α}	<0.01%
Conjugated Linoleic Acid (10E,12Z)	<0.01%	13,14-dihydro-15-keto Prostaglandin F _{2α}	<0.01%
8(S),15(S)-DiHETE	<0.01%	Prostaglandin F _{3α}	<0.01%
Leukotriene B ₄	<0.01%	Prostaglandin J ₂	<0.01%
Misoprostol	<0.01%	15-deoxy-Δ ^{12,14} -Prostaglandin J ₂	<0.01%
Misoprostol (free acid)	<0.01%	Thromboxane B ₂	<0.01%

Table 5. Specificity of the PGE₂ Monoclonal Antibody

RESOURCES

Troubleshooting

Problem	Possible Causes	Recommended Solutions
Erratic values; dispersion of duplicates	A. Trace organic contaminants in the water source B. Poor pipetting/technique	A. Replace activated carbon filter or change source of UltraPure water
High NSB (>0.035)	A. Poor washing B. Exposure of NSB wells to specific antibody	A. Rewash plate and redevelop
Very low B ₀	A. Trace organic contaminants in the water source B. Plate requires additional development time C. Dilution error in preparing reagents	A. Replace activated carbon filter or change source of UltraPure water B. Return plate to shaker and re-read later
Low sensitivity (shift in dose response curve)	Standard is degraded	Replace standard
Analyses of two dilutions of a biological sample do not agree (<i>i.e.</i> , more than 20% difference)	Interfering substances are present	Purify sample prior to analysis by EIA ⁵
Only Total Activity (TA) wells develop	Trace organic contaminants in the water source	Replace activated carbon filter or change source of UltraPure water

Additional Reading

Go to www.caymanchem.com/514010/references for a list of publications citing the use of Cayman's PGE₂ EIA Kit.

References

1. Granström, E., Hamberg, M., Hansson, G., *et al.* Chemical instability of 15-keto-13,14-dihydro-PGE₂: The reason for low assay reliability. *Prostaglandins* **19**, 933-945 (1980).
2. Hamberg, M. and Samuelsson, B. On the metabolism of prostaglandins E₁ and E₂ in man. *J. Biol. Chem.* **246**, 6713-6721 (1971).
3. Fitzpatrick, F.A., Aguirre, R., Pike J.E., *et al.* The stability of 13,14-dihydro-15-keto-PGE₂. *Prostaglandins* **19**, 917-931 (1980).
4. Ujihara, M., Urade, Y., Eguchi, N., *et al.* Prostaglandin D₂ formation and characterization of its synthetases in various tissues of adult rats. *Arch. Biochem. Biophys.* **260**, 521-531 (1988).
5. Maxey, K.M., Maddipati, K.R. and Birkmeier, J. Interference in enzyme immunoassays. *J. Clin. Immunoassay* **15**, 116-120 (1992).

Related Products

C-Reactive Protein (human) EIA Kit - Item No. 10011236
Luminex® Prostaglandin E₂ Kit - Item No. 10007501
Precellys® Ceramic Beads Kit (1.4 mm) - Item No. 10011152
Precellys® Ceramic Beads Kit (2.8 mm) - Item No. 10011151
Precellys® Reinforced Ceramic Beads Kit - Item No. 16859
Prostaglandin E Metabolite EIA Kit - Item No. 514531
Prostaglandin E₂ - Item No. 14010
Prostaglandin E₂ Express EIA Kit - Item No. 500141
Prostaglandin E₂ FPIA Kit - Green - Item No. 500501
Prostaglandin E₂ FPIA Kit - Red - Item No. 10004517
Prostaglandin Screening EIA Kit - Item No. 514012
Protein Determination Kit - Item No. 704002
SPE Cartridges (C-18) - Item No. 400020
UltraPure Water - Item No. 400000

Warranty and Limitation of Remedy

Cayman Chemical Company makes **no warranty or guarantee** of any kind, whether written or oral, expressed or implied, including without limitation, any warranty of fitness for a particular purpose, suitability and merchantability, which extends beyond the description of the chemicals hereof. Cayman **warrants only** to the original customer that the material will meet our specifications at the time of delivery. Cayman will carry out its delivery obligations with due care and skill. Thus, in no event will Cayman have **any obligation or liability**, whether in tort (including negligence) or in contract, for any direct, indirect, incidental or consequential damages, even if Cayman is informed about their possible existence. This limitation of liability does not apply in the case of intentional acts or negligence of Cayman, its directors or its employees.

Buyer's **exclusive remedy** and Cayman's sole liability hereunder shall be limited to a refund of the purchase price, or at Cayman's option, the replacement, at no cost to Buyer, of all material that does not meet our specifications.

Said refund or replacement is conditioned on Buyer giving written notice to Cayman within thirty (30) days after arrival of the material at its destination. Failure of Buyer to give said notice within thirty (30) days shall constitute a waiver by Buyer of all claims hereunder with respect to said material.

For further details, please refer to our Warranty and Limitation of Remedy located on our website and in our catalog.

12								
11								
10								
9								
8								
7								
6								
5								
4								
3								
2								
1								
	A	B	C	D	E	F	G	H

NOTES

This document is copyrighted. All rights are reserved. This document may not, in whole or part, be copied, photocopied, reproduced, translated, or reduced to any electronic medium or machine-readable form without prior consent, in writing, from Cayman Chemical Company.

©05/07/2013, Cayman Chemical Company, Ann Arbor, MI, All rights reserved. Printed in U.S.A.