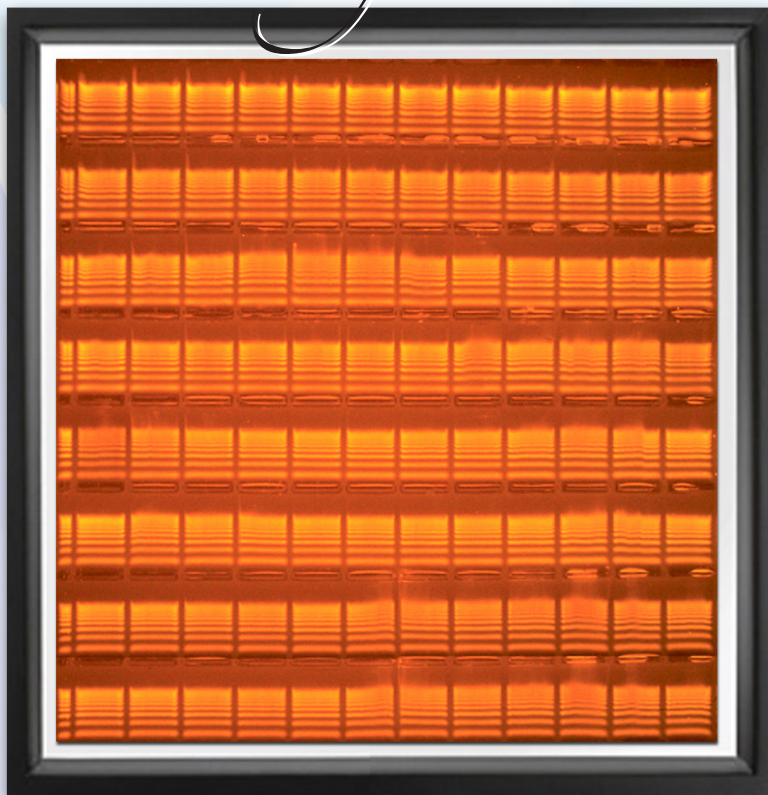
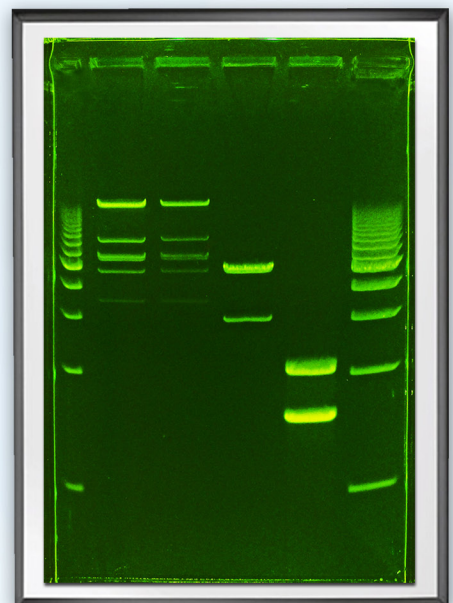


RunOne™ PreCast Gel Catalog

gels worth framing...

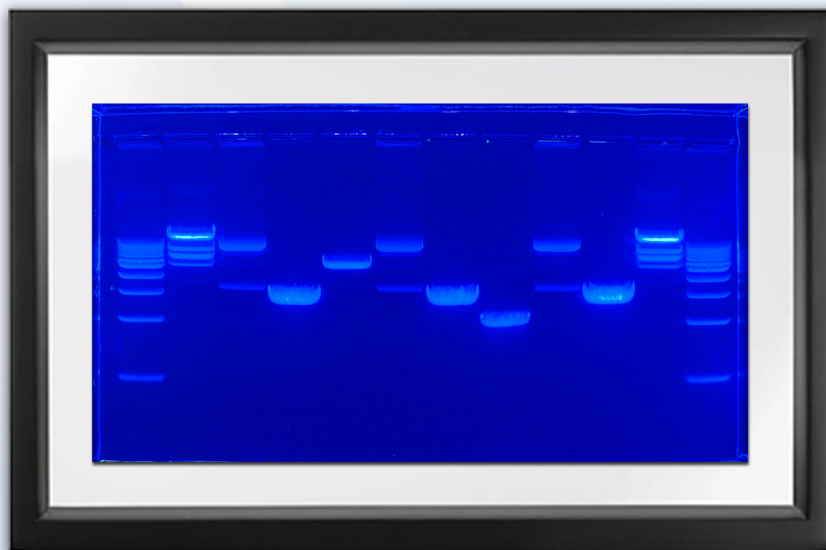


EtBr Gel on
UltraViolet
UV Filter
8(12+1) well
2010



GreenGel on
PrepOne
Long pass filter
5+1 well
2012

GreenGel on
PrepOne
Naked
12+1 well
2012



www.interchim.com



211 bis Avenue Kennedy - BP 1140
03103 Montluçon - France
33 (0) 4 70 03 88 55
Fax 33 (0) 4 70 03 82 60
e-mail interchim@interchim.com

Agence Paris - Normandie
33 (0) 1 41 32 34 40
Fax 33 (0) 1 47 91 23 90
e-mail interchim.paris@interchim.com

General Information

Gel Compatibility

RunOne™ Pre-Cast Gels do not require a specific gel apparatus. They will work in a gel box which has a platform of sufficient size. We recommend using the RunOne Electrophoresis System, as we have optimized all run parameters on this system.

What buffer to choose

Buffer Capacity

TBE has a higher buffer capacity than TAE. The buffer capacity for TAE is relatively low and can become exhausted over long runs.

Temperature

TBE tends to run cooler than TAE. For example, when TBE is compared to TAE in the RunOne Electrophoresis System, the TBE buffer is 5-10°C cooler over a 40 minute run at 100V.

Resolution

The resolving power of TAE and TBE are nearly identical with the exception of supercoiled DNA which is better resolved in TAE than in TBE.

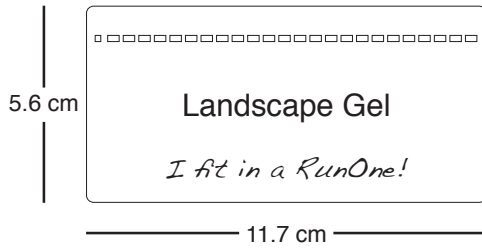
Run Times

Double stranded linear DNA migrates about 10% faster through TAE than TBE, but because TBE runs cooler, the bands are sharper and straighter.

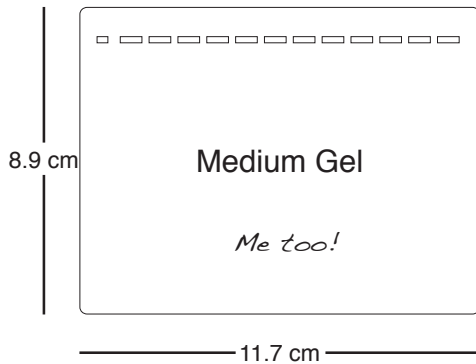
Shelf Life

- 3% and lower percentage Agarose gels with EtBr - 7 months at room temperature
- 4% Agarose gels with EtBr - 3 months at room temperature
- All GreenGels - 3 months at room temperature
- Agarose gels with no stain - 1 year at room temperature
- Polyacrylamide gels have a shelf life of 6 months at 4°C

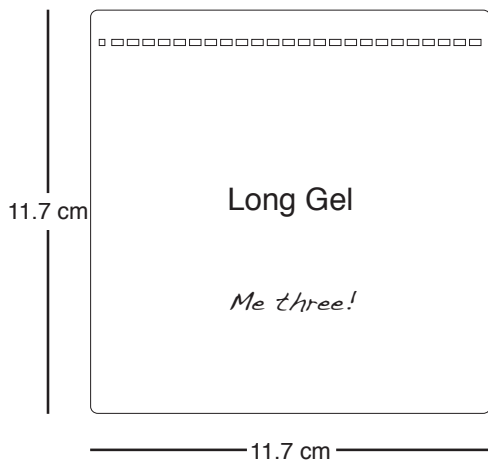
Contents & Sizes



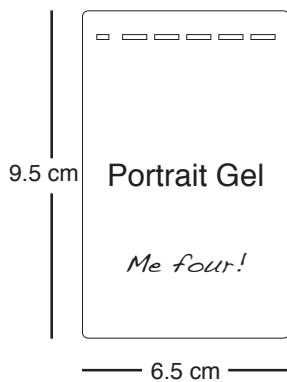
pgs. 13, 14, 16, 18,
19, 20, 25, 26, 28,
30, 31, 32, 35, 46,
47



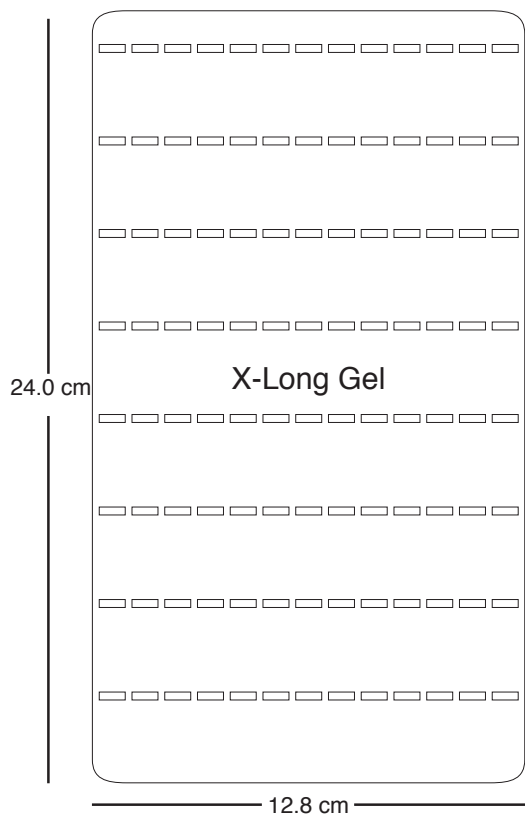
pgs. 9, 10, 11, 12,
14, 15, 26, 31, 45,
47, 50, 51



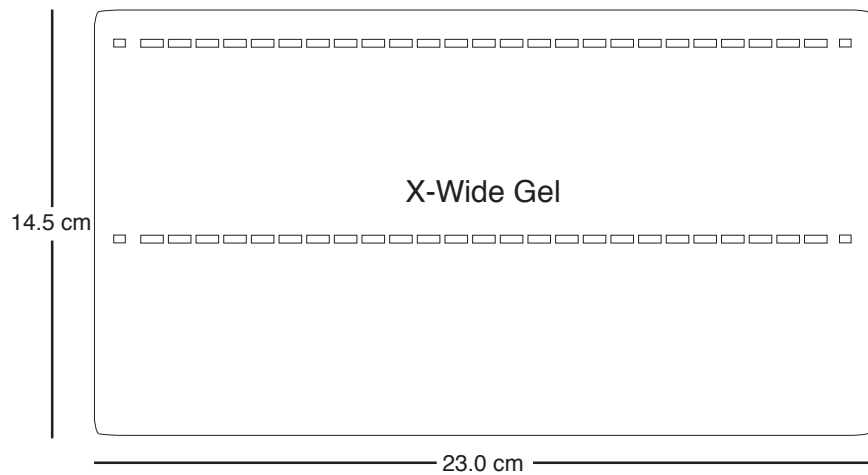
pgs. 9, 10, 13, 15,
18, 19, 20, 21, 22,
23, 25, 26, 30, 31,
32, 33, 35, 36, 37,
39, 40, 41, 42, 45,
46, 47, 48



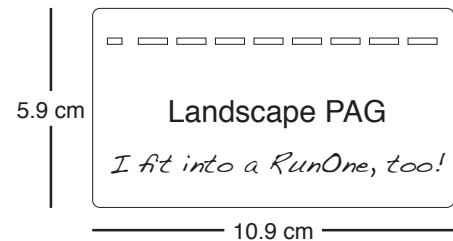
pgs. 9, 11, 12, 14,
17, 25, 27, 29, 45,
46, 49, 50



pgs. 20, 21, 22, 33, 34, 41




pgs. 34, 38, 43




pg. 52



January

| Sunday | Monday | Tuesday | Wednesday | Thursday | Friday | Saturday |
|--------|--------|--|-----------|----------|--------|----------|
| | | 1  | 2 | 3 | 4 | 5 |
| 6 | 7 | 8 | 9 | 10 | 11 | 12 |
| 13 | 14 | 15 | 16 | 17 | 18 | 19 |
| 20 | 21 | 22 | 23 | 24 | 25 | 26 |
| 27 | 28 | 29 | 30 | 31 | | |


February

| Sunday | Monday | Tuesday | Wednesday | Thursday | Friday | Saturday |
|---------------------------------------|--------|---------|-----------|--|--------|----------|
| | | | | | 1 | 2 |
| 3 | 4 | 5 | 6 | 7 | 8 | 9 |
| 10 | 11 | 12 | 13 | 14 Harvard GTP  | 15 | 16 |
| 17 | 18 | 19 | 20 | 21 | 22 | 23 |
| 24 ASM Biodefense - Washington, DC | 25 | 26 | 27 | 28 | | |


March

| Sunday | Monday | Tuesday | Wednesday | Thursday | Friday | Saturday |
|---|--------|---------|-----------|----------|--------|----------|
| | | | | | 1 | 2 |
| 3 | 4 | 5 | 6 | 7 | 8 | 9 |
| 10 | 11 | 12 | 13 | 14 | 15 | 16 |
| 17  | 18 | 19 | 20 | 21 | 22 | 23 |
| 24/31  | 25 | 26 | 27 | 28 | 29 | 30 |

April

| Sunday | Monday | Tuesday | Wednesday | Thursday | Friday | Saturday |
|---|---|---------|-----------|----------|--------|----------|
| | 1 | 2 | 3 | 4 | 5 | 6 |
| 7 AACR - Washington, DC | 8 | 9 | 10 | 11 | 12 | 13 |
| 4 | 15 | 16 | 17 | 18 | 19 | 20 |
| 21 Experimental Biology - Boston, MA | 22  | 23 | 24 | 25 | 26 | 27 |
| 28 | 29 | 30 | | | | |

May


| Sunday | Monday | Tuesday | Wednesday | Thursday | Friday | Saturday |
|-------------------------|---|---------|---------------------------------------|-----------------------------|--------|---------------------|
| | | | 1 | 2 | 3 | 4 AAI - Honolulu |
| 5 AAI - Honolulu, HI | 6 | 7 | 8 NCI Tent Show Biotech - Tokyo | 9 Frederick, MD Japan | 10 | 11 |
| 12 | 13 | 14 | 15 | 16 | 17 | 18 |
| 19 | 20 | 21 | 22 | 23 | 24 | 25 |
| 26 | 27  | 28 | 29 | 30 | 31 | |

June

| Sunday | Monday | Tuesday | Wednesday | Thursday | Friday | Saturday |
|-------------------|--------|---------|-----------|----------|--------|----------|
| | | | | | | 1 |
| 2 | 3 | 4 | 5 | 6 | 7 | 8 |
| 9 ESHG - Paris | 10 | 11 | 12 | 13 | 14 | 15 |
| 16 | 17 | 18 | 19 | 20 | 21 | 22 |
| 23/30 | 24 | 25 | 26 | 27 | 28 | 29 |

Notes:

July

| Sunday | Monday | Tuesday | Wednesday | Thursday | Friday | Saturday |
|--------|--------|---------|-----------|---|--------|----------|
| | 1 | 2 | 3 | 4  | 5 | 6 |
| 7 | 8 | 9 | 10 | 11 | 12 | 13 |
| 4 | 15 | 16 | 17 | 18 | 19 | 20 |
| 21 | 22 | 23 | 24 | 25 | 26 | 27 |
| 28 | 29 | 30 | 31 | | | |

August

| Sunday | Monday | Tuesday | Wednesday | Thursday | Friday | Saturday |
|--------|--------|---------|-----------|----------|--------|----------|
| | | | | 1 | 2 | 3 |
| 4 | 5 | 6 | 7 | 8 | 9 | 10 |
| 11 | 12 | 13 | 14 | 15 | 16 | 17 |
| 18 | 19 | 20 | 21 | 22 | 23 | 24 |
| 25 | 26 | 27 | 28 | 29 | 30 | 31 |

September

| Sunday | Monday | Tuesday | Wednesday | Thursday | Friday | Saturday |
|--------|--------|---------|--------------------------|----------|--------|----------|
| 1 | 2 | 3 | 4 | 5 | 6 | 7 |
| 8 | 9 | 10 | 11 ICAAC - Denver, CO | 12 | 13 | 14 |
| 15 | 16 | 17 | 18 | 19 | 20 | 21 |
| 22 | 23 | 24 | 25 | 26 | 27 | 28 |
| 29 | 30 | | | | | |


October

| Sunday | Monday | Tuesday | Wednesday | Thursday | Friday | Saturday |
|--------|--------|---------|-------------------------|--|--------------------|----------|
| | | 1 | 2 | 3 | 4 | 5 |
| 6 | 7 | 8 | 9 | 10 NIH Tent Show | 11 Bethesda, MD | 12 |
| 13 | 14 | 15 | 16 | 17 | 18 | 19 |
| 20 | 21 | 22 | 23 ASHG - Boston, MA | 24 | 25 | 26 |
| 27 | 28 | 29 | 30 | 31  | | |

November

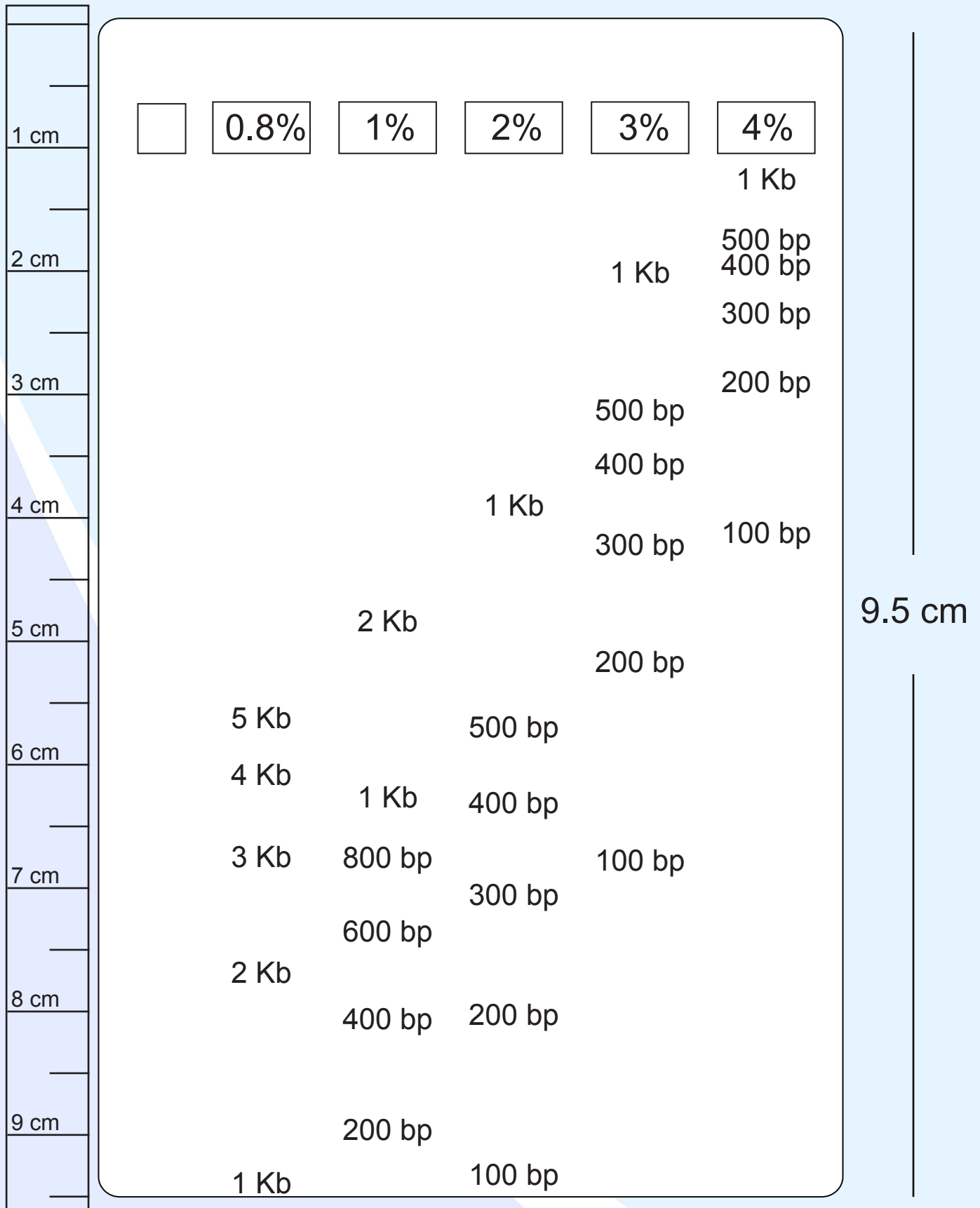
| Sunday | Monday | Tuesday | Wednesday | Thursday | Friday | Saturday |
|--------------------------|--------|---------|-------------------------|--|--------|----------|
| | | | | | 1 | 2 |
| 3 | 4 | 5 | 6 | 7 | 8 | 9 |
| 10 | 11 | 12 | 13 AMP - Phoenix, AZ | 14 | 15 | 16 |
| SFN - San Diego, CA | | | | | | |
| 17 ASHI - Chicago, IL | 18 | 19 | 20 | 21 | 22 | 23 |
| 24 | 25 | 26 | 27 | 28  | 29 | 30 |

December

| Sunday | Monday | Tuesday | Wednesday | Thursday | Friday | Saturday |
|--------|--------|---------|--|----------|--------|----------|
| 1 | 2 | 3 | 4 | 5 | 6 | 7 |
| 8 | 9 | 10 | 11 | 12 | 13 | 14 |
| 15 | 16 | 17 | 18 | 19 | 20 | 21 |
| 22 | 23 | 24 | 25  | 26 | 27 | 28 |
| 29 | 30 | 31 | | | | |

Notes:

RESOLUTION

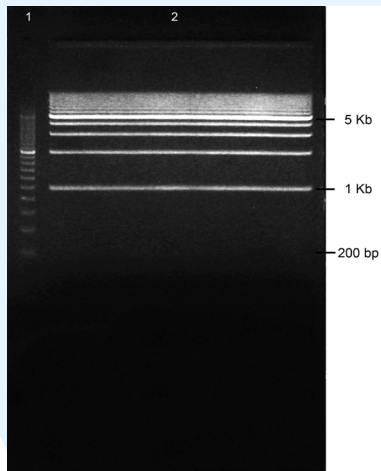


RunOne Precast TAE Gels

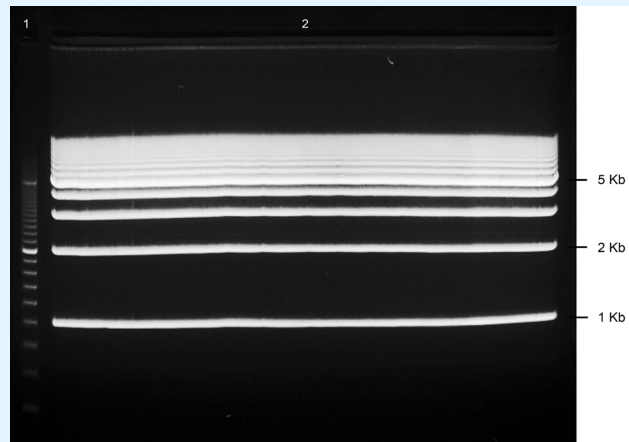


- MultiChannel compatible gels

RunOne TAE Gels - 1 well



GE-5135
Run at 100V (8.33cm/V) for 60 min
Lane 1: SmartMark 200 bp ladder
Lane 2: SmartMark 1 Kb ladder



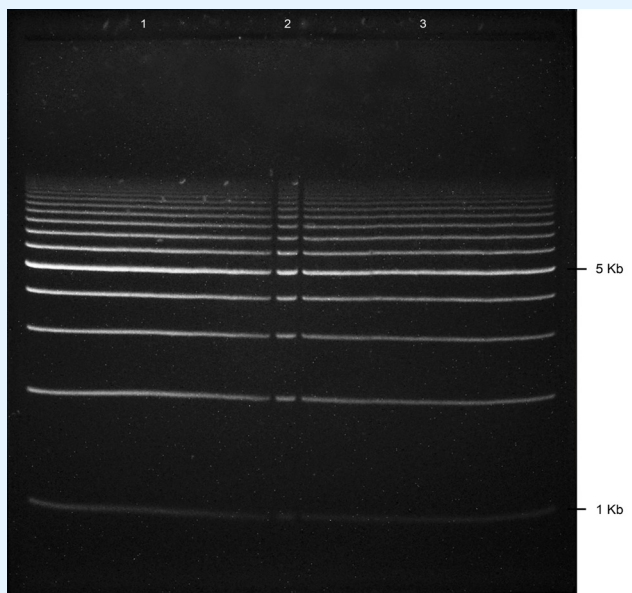
GE-5122
Run at 100V (8.33cm/V) for 85 min
Lane 1: SmartMark 200 bp ladder
Lane 2: SmartMark 1 Kb ladder

PreCast Gel Format - 1+1 well

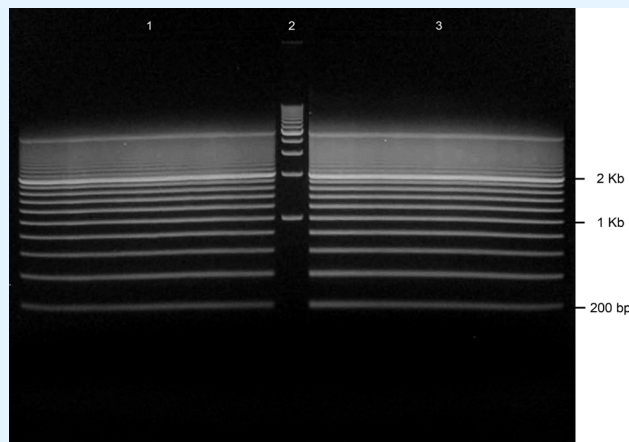
| Catalog # | Description | Load Volume | Running Distance | Qty |
|-----------|--|-------------|------------------|-------|
| GE-5161 | 0.8% Agarose TAE w/EtBr Long Prep Gel, 1+1 well* | 600 µl | 11.2 cm | 5 ea |
| GE-5210 | 1% Agarose TAE w/EtBr Long Prep Gel, 1+1 well* | 600 µl | 11.2 cm | 5 ea |
| GE-5131 | 0.8% Agarose TAE w/EtBr Portrait Prep Gel, 1+1 well* | 300 µl | 8.7 cm | 10 ea |
| GE-5135 | 1% Agarose TAE w/EtBr Portrait Prep Gel, 1+1 well* | 300 µl | 8.7 cm | 10 ea |
| GE-5139 | 3% Agarose TAE w/EtBr Portrait Prep Gel, 1+1 well* | 300 µl | 8.7 cm | 10 ea |
| GE-5121 | 0.8% Agarose TAE w/EtBr Medium Prep Gel, 1+1 well* | 600 µl | 8.2 cm | 5 ea |
| GE-5122 | 1% Agarose TAE w/EtBr Medium Prep Gel, 1+1 well* | 600 µl | 8.2 cm | 5 ea |

* 1.5 mm wells

RunOne TAE Gels - 2 wells



GE-5200
Run at 100V (8.33cm/V) for 120 min
Lane 1-3: SmartMark 1 Kb ladder



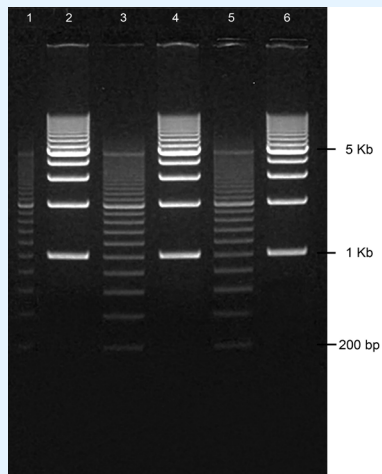
GE-5176
Run at 100V (8.33cm/V) for 86 min
Lane 1 & 3: SmartMark 200 bp ladder
Lane 2: SmartMark 1 Kb ladder

PreCast Gel Format - 2+1 well

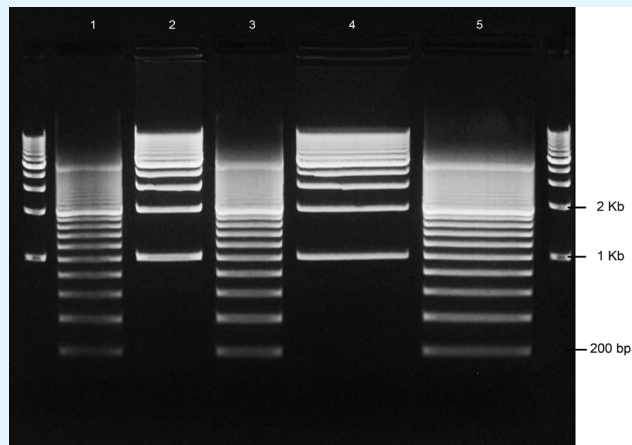
| Catalog # | Description | Load Volume | Running Distance | Qty |
|-----------|--|-------------|------------------|------|
| GE-5200 | 1% Agarose TAE w/ EtBr Long Prep Gel, 2+1 well* | 300 µl | 11.2 cm | 5 ea |
| GE-5201 | 0.8% Agarose TAE w/ EtBr Long Prep Gel, 2+1 well* | 300 µl | 11.2 cm | 5 ea |
| GE-5202 | 2% Agarose TAE w/ EtBr Long Prep Gel, 2+1 well* | 300 µl | 11.2 cm | 5 ea |
| GE-5207 | 4% Agarose TAE w/ EtBr Long Prep Gel, 2+1 well* | 300 µl | 11.2 cm | 5 ea |
| GE-5176 | 0.8% Agarose TAE w/EtBr Medium Prep Gel, 2+1 well* | 300 µl | 8.2 cm | 5 ea |
| GE-5177 | 1% Agarose TAE w/EtBr Medium Prep Gel, 2+1 well* | 300 µl | 8.2 cm | 5 ea |

* 1.5 mm wells

RunOne TAE Gels - 5 wells



GE-5100
Run at 100V (8.33cm/V) for 58 min
Lane 1, 3 & 5: SmartMark 200 bp ladder
Lane 2, 4 & 6: SmartMark 1 Kb ladder



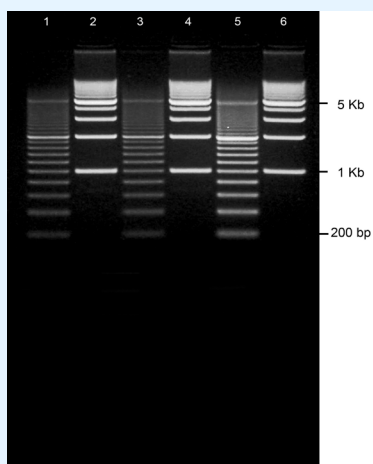
GE-3690
Run at 100V (8.33cm/V) for 82 min
Lane 1, 3 & 5: SmartMark 200 bp ladder
Lane 2, 4: SmartMark 1 Kb ladder

PreCast Gel Format - 5+1 and 5+2 well

| Catalog # | Description | Load Volume | Running Distance | Qty |
|-----------|--|-------------|------------------|-------|
| GE-5100 | 1% Agarose TAE w/EtBr Portrait Prep Gel, 5+1 well* | 70 µl | 8.7 cm | 10 ea |
| GE-5101 | 0.8% Agarose TAE w/EtBr Portrait Prep Gel, 5+1 well* | 70 µl | 8.7 cm | 10 ea |
| GE-5102 | 2% Agarose TAE w/EtBr Portrait Prep Gel, 5+1 well* | 70 µl | 8.7 cm | 10 ea |
| GE-5103 | 3% Agarose TAE w/EtBr Portrait Prep Gel, 5+1 well* | 70 µl | 8.7 cm | 10 ea |
| GE-5104 | 1.5% Agarose TAE w/EtBr Portrait Prep Gel, 5+1 well* - Note: All 5+1 well gels are 9 mm thick | 70 µl | 8.7 cm | 10 ea |
| GE-3690 | 1% Agarose TAE w/EtBr Medium Prep Gel, 5+2 well* | 75&112 µl | 8.2 cm | 5 ea |
| GE-3691 | 0.8% Agarose TAE w/EtBr Medium Prep Gel, 5+2 well* | 75&112 µl | 8.2 cm | 5 ea |
| GE-3692 | 2% Agarose TAE w/EtBr Medium Prep Gel, 5+2 well* | 75&112 µl | 8.2 cm | 5 ea |
| GE-3697 | 4% Agarose TAE w/EtBr Medium Prep Gel, 5+2 well* | 75&112 µl | 8.2 cm | 5 ea |

* 1.5 mm wells

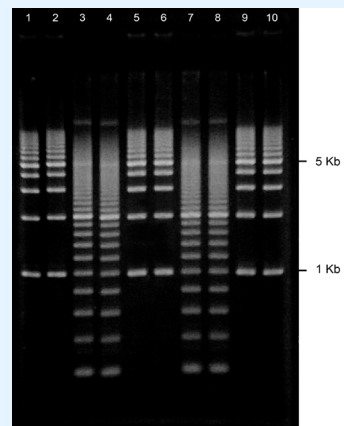
RunOne TAE Gels - 6 wells



GE-3780
Run at 100V (8.33cm/V) for 38 min
Lane 1, 3 & 5: SmartMark 200 bp ladder
Lane 2, 4 & 6: SmartMark 1 Kb ladder

PreCast Gel Format - 6 well

| Catalog # | Description | Load | Running | |
|-----------|--|--------|----------|-------|
| | | Volume | Distance | Qty |
| GE-3780 | 1% Agarose TAE w/EtBr Portrait Gel, 6 well | 30 µl | 8.7 cm | 10 ea |
| GE-3781 | 0.8% Agarose TAE w/EtBr Portrait Gel, 6 well | 30 µl | 8.7 cm | 10 ea |
| GE-5181 | 0.8% Agarose TAE Medium Prep Gel, 6 well** | 300 µl | 8.2 cm | 5 ea |



GE-3870
Run at 100V (8.33cm/V) for 65 min
Lane 1, 2, 5, 6, 9 & 10: SmartMark 1 Kb ladder
Lane 3, 4, 7 & 8: SmartMark 200 bp ladder

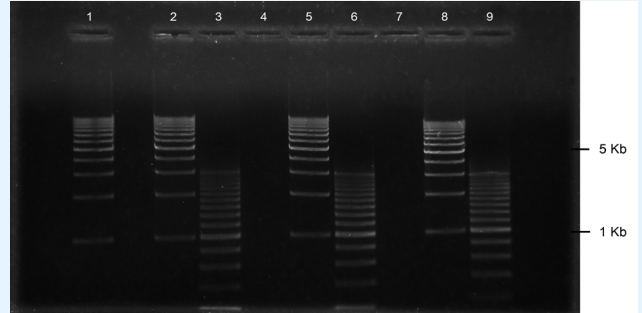
PreCast Gel Format - 10 well

| Catalog # | Description | Load | Running | |
|-----------|---|--------|----------|-------|
| | | Volume | Distance | Qty |
| GE-3870 | 1% Agarose TAE w/EtBr Portrait Gel, 10 well | 15 µl | 8.7 cm | 10 ea |
| GE-3871 | 0.8% Agarose TAE w/EtBr Portrait Gel, 10 well | 15 µl | 8.7 cm | 10 ea |
| GE-3872 | 2% Agarose TAE w/EtBr Portrait Gel, 10 well | 15 µl | 8.7 cm | 10 ea |

**2.4 mm wells

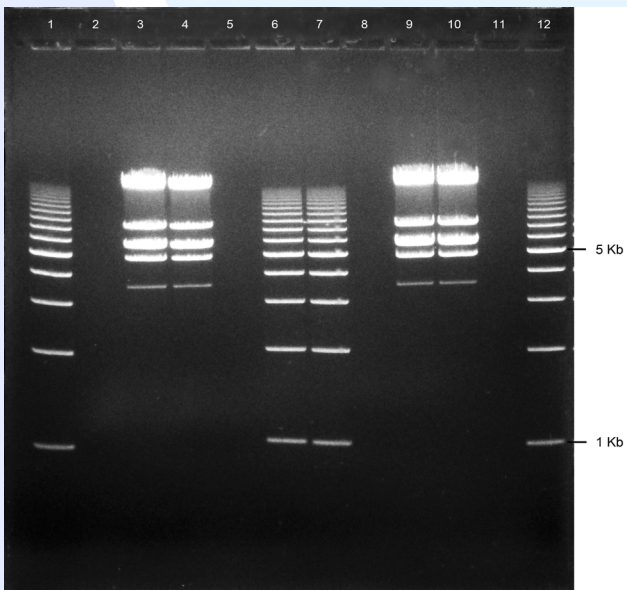
RunOne TAE Gels - 8 & 12 wells

GE-3560
Run at 100V (8.33cm/V) for 30 min
Lane 1, 2, 5 & 8: SmartMark 1 Kb ladder
Lane 3, 6 & 9: SmartMark 200 bp ladder



PreCast Gel Format - 8+1 well

| Catalog # | Description | Load | Running | |
|-----------|---|--------|----------|-------|
| | | Volume | Distance | Qty |
| GE-3920 | 1% Agarose TAE w/EtBr, Long gel, 8+1 well | 30 µl | 11.2 cm | 5 ea |
| GE-3560 | 1% Agarose TAE w/EtBr Landscape Gel, 8+1 well | 30 µl | 5.0 cm | 10 ea |

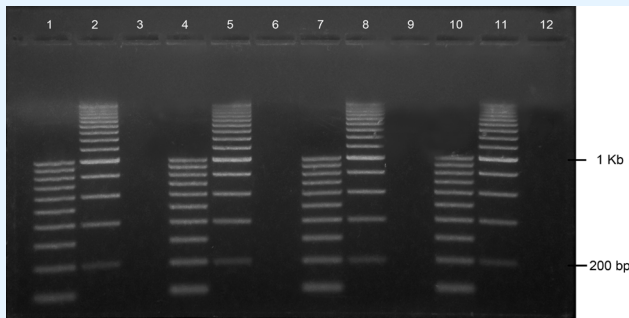


GE-3720
Run at 100V (8.33cm/V) for 110 min
Lane 1, 6, 7 & 12: SmartMark 1 Kb ladder
Lane 3, 4, 9 & 10: Lambda DNA/EcoRI cut

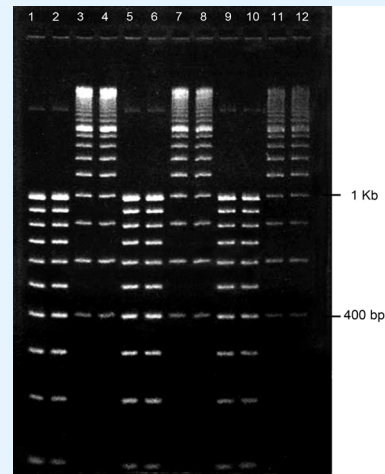
PreCast Gel Format - 12+1 well

| Catalog # | Description | Load | Running | |
|-----------|---|--------|----------|------|
| | | Volume | Distance | Qty |
| GE-3720 | 1% Agarose TAE w/EtBr Long Gel, 12+1 well | 30 µl | 11.2 cm | 5 ea |
| GE-3722 | 2% Agarose TAE w/EtBr Long Gel, 12+1 well | 30 µl | 11.2 cm | 5 ea |
| GE-3723 | 3% Agarose TAE w/EtBr Long Gel, 12+1 well | 30 µl | 11.2 cm | 5 ea |
| GE-3727 | 4% Agarose TAE w/EtBr Long Gel, 12+1 well | 30 µl | 11.2 cm | 5 ea |

RunOne TAE Gels - 12 wells



GE-3602
Run at 100V (8.33cm/V) for 40 min
Lane 1, 4, 7 & 10: SmartMark 100 bp ladder
Lane 2, 5, 8 & 11: SmartMark 200 bp ladder

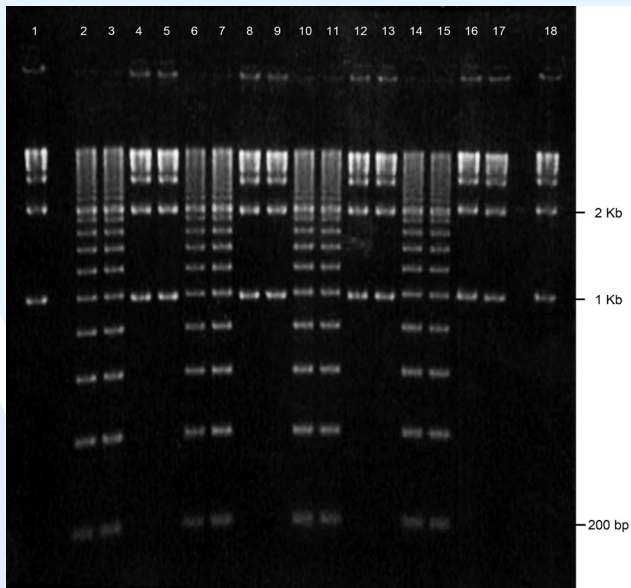


GE-4202 (equivalent to GE-3702)
Run at 100V (8.33cm/V) for 80 min
Lane 1, 2, 5, 6, 9 & 10: SmartMark 100 bp ladder
Lane 3, 4, 7, 8, 11 & 12: SmartMark 200 bp ladder

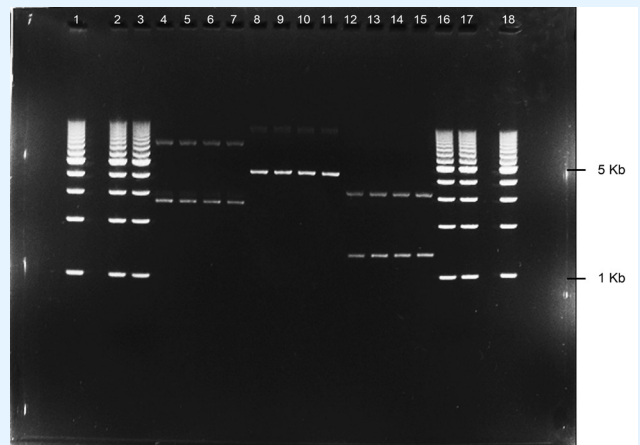
PreCast Gel Format - 12+1 well & 12 well

| Catalog # | Description | Load | Running | Qty |
|-----------|--|--------|----------|-------|
| | | Volume | Distance | |
| GE-3760 | 1% Agarose TAE w/EtBr Medium Gel, 12+1 well | 30 µl | 8.2 cm | 5 ea |
| GE-3767 | 4% Agarose TAE w/EtBr Medium Gel, 12+1 well | 30 µl | 8.2 cm | 5 ea |
| GE-3600 | 1% Agarose TAE w/EtBr Landscape Gel, 12+1 well | 30 µl | 5.0 cm | 10 ea |
| GE-3601 | 0.8% Agarose TAE w/EtBr Landscape Gel, 12+1 well | 30 µl | 5.0 cm | 10 ea |
| GE-3602 | 2% Agarose TAE w/EtBr Landscape Gel, 12+1 well | 30 µl | 5.0 cm | 10 ea |
| GE-3603 | 3% Agarose TAE w/EtBr Landscape Gel, 12+1 well | 30 µl | 5.0 cm | 10 ea |
| GE-3607 | 4% Agarose TAE w/EtBr Landscape Gel, 12+1 well | 30 µl | 5.0 cm | 10 ea |
| GE-3700 | 1% Agarose TAE w/EtBr Portrait Gel, 12 well | 11 µl | 8.7 cm | 10 ea |
| GE-3701 | 0.8% Agarose TAE w/EtBr Portrait Gel, 12 well | 11 µl | 8.7 cm | 10 ea |
| GE-3702 | 2% Agarose TAE w/EtBr Portrait Gel, 12 well | 11 µl | 8.7 cm | 10 ea |
| GE-3703 | 3% Agarose TAE w/EtBr Portrait Gel, 12 well | 11 µl | 8.7 cm | 10 ea |
| GE-3707 | 4% Agarose TAE w/EtBr Portrait Gel, 12 well | 11 µl | 8.7 cm | 10 ea |

RunOne TAE Gels - 16 wells



GE-3770
Run at 100V (8.33cm/V) for 45 min
Lane 1, 4, 5, 8, 9, 12, 13, 16, 17 & 18: SmartMark 1 Kb ladder
Lane 2, 3, 6, 7, 10, 11, 14 & 15: SmartMark 200 bp ladder

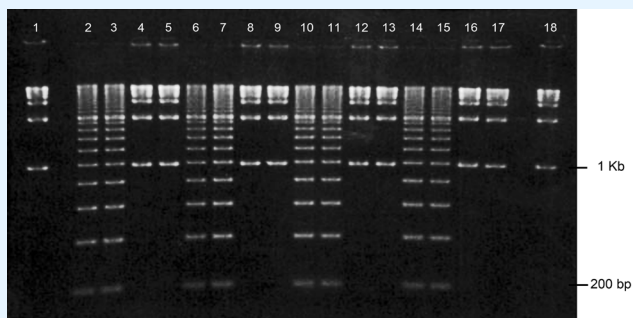


GG5331 (equivalent to GE-5331)
Run at 100V (8.33cm/V) for 60 min
Lane 1-3 & 16-18: SmartMark 1 Kb ladder
Lane 4-7: 15 ng Supercoiled DNA Sample# 1
Lane 8-11: 15 ng Supercoiled DNA Sample# 2
Lane 12-15: 15 ng Supercoiled DNA Sample# 3

PreCast Gel Format - 16+2 well

| Catalog # | Description | Load Volume | Running Distance | Qty |
|-----------|---|-------------|------------------|------|
| GE-3770 | 1% Agarose TAE w/EtBr Long Gel, 16+2 well | 11 µl | 11.2 cm | 5 ea |
| GE-3772 | 2% Agarose TAE w/EtBr Long Gel, 16+2 well | 11 µl | 11.2 cm | 5 ea |
| GE-3777 | 4% Agarose TAE w/EtBr Long Gel, 16+2 well | 11 µl | 11.2 cm | 5 ea |
| GE-5330 | 1% Agarose TAE w/EtBr Medium Gel, 16+2 well | 11 µl | 8.2 cm | 5 ea |
| GE-5331 | 0.8% Agarose TAE w/EtBr Medium Gel, 16+2 well | 11 µl | 8.2 cm | 5 ea |

RunOne TAE Gels - 16 wells

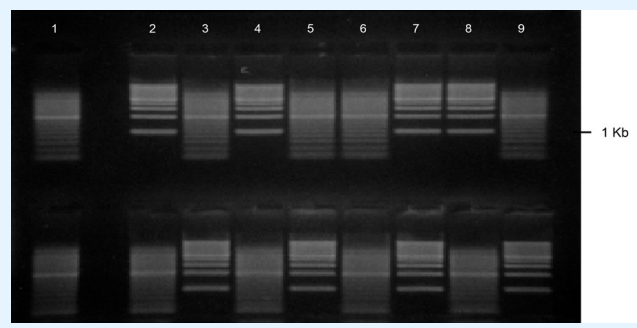


GE-4542 (equivalent to GE-3542)
 Run at 100V (8.33cm/V) for 45 min
 Lane 1, 4, 5, 8, 9, 12, 13, 16, 17 & 18: SmartMark 1 Kb ladder
 Lane 2, 3, 6, 7, 10, 11, 14 & 15: SmartMark 200 bp ladder

PreCast Gel Format - 16+2 well

| Catalog # | Description | Load | Running | |
|-----------|--|--------|----------|-------|
| | | Volume | Distance | Qty |
| GE-3540 | 1% Agarose TAE w/EtBr Landscape Gel, 16+2 well | 11 µl | 5.0 cm | 10 ea |
| GE-3541 | 0.8% Agarose TAE w/EtBr Landscape Gel, 16+2 well | 11 µl | 5.0 cm | 10 ea |
| GE-3542 | 2% Agarose TAE w/EtBr Landscape Gel, 16+2 well | 11 µl | 5.0 cm | 10 ea |
| GE-3543 | 3% Agarose TAE w/EtBr Landscape Gel, 16+2 well | 11 µl | 5.0 cm | 10 ea |
| GE-3547 | 4% Agarose TAE w/EtBr Landscape Gel, 16+2 well | 11 µl | 5.0 cm | 10 ea |

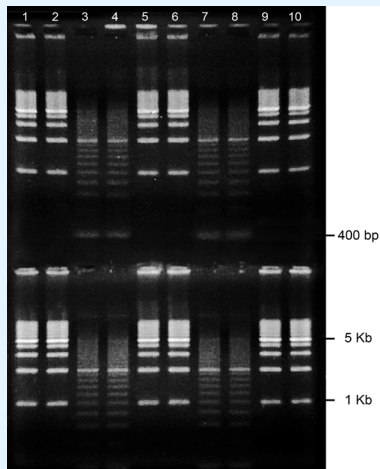
GE-3020 (equivalent to GE-3520)
 Run at 100V (8.33cm/V) for 20 min
 Lane 1, 3, 5, 6 & 9 (Top): SmartMark 200 bp ladder
 Lane 2, 4, 7 & 8 (Top): SmartMark 1 Kb ladder



PreCast Gel Format - 2(8+1) well

| Catalog # | Description | Load | Running | |
|-----------|--|--------|----------|-------|
| | | Volume | Distance | Qty |
| GE-3520 | 1% Agarose TAE w/EtBr Landscape Gel, 2(8+1) well | 30 µl | 2.5 cm | 10 ea |
| GE-3522 | 2% Agarose TAE w/EtBr Landscape Gel, 2(8+1) well | 30 µl | 2.5 cm | 10 ea |
| GE-3523 | 3% Agarose TAE w/EtBr Landscape Gel, 2(8+1) well | 30 µl | 2.5 cm | 10 ea |
| GE-3527 | 4% Agarose TAE w/EtBr Landscape Gel, 2(8+1) well | 30 µl | 2.5 cm | 10 ea |

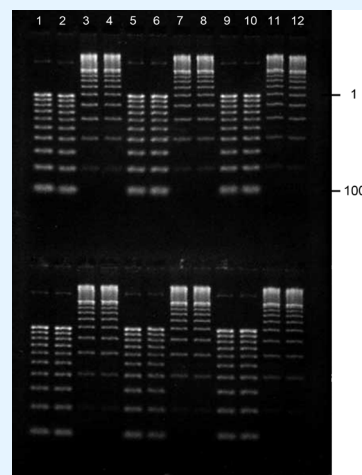
RunOne TAE Gels - 20 & 24 wells



GE-4380 (equivalent to GE-3880)
Run at 100V (8.33cm/V) for 35 min
Lane 1, 2, 5, 6, 9 & 10: SmartMark 1 Kb ladder
Lane 3, 4, 7 & 8: SmartMark 200 bp ladder

PreCast Gel Format - 2(10) well

| Catalog # | Description | Load | Running | Qty |
|-----------|--|------------|----------|-------|
| | | Volume | Distance | |
| GE-3880 | 1% Agarose TAE w/EtBr Portrait Gel, 2(10) well | 15 μ l | 4.5 cm | 10 ea |
| GE-3882 | 2% Agarose TAE w/EtBr Portrait Gel, 2(10) well | 15 μ l | 4.5 cm | 10 ea |



GE-4212 (equivalent to GE-3712)
Run at 100V (8.33cm/V) for 45 min
Lane 1, 2, 5, 6, 9 & 10: SmartMark 100 bp ladder
Lane 3, 4, 7, 8, 11 & 12: SmartMark 200 bp ladder

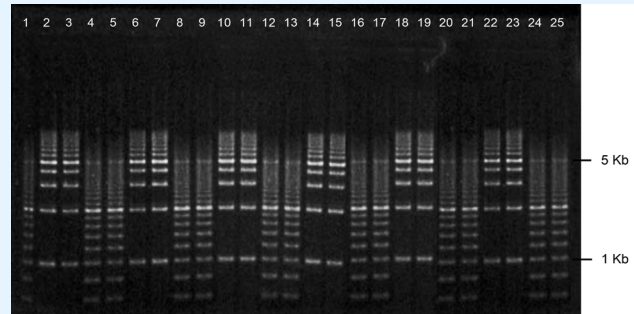
PreCast Gel Format - 2(12) well

| Catalog # | Description | Load | Running | Qty |
|-----------|--|------------|----------|-------|
| | | Volume | Distance | |
| GE-3710 | 1% Agarose TAE w/EtBr Portrait Gel, 2(12) well | 11 μ l | 4.5 cm | 10 ea |
| GE-3712 | 2% Agarose TAE w/EtBr Portrait Gel, 2(12) well | 11 μ l | 4.5 cm | 10 ea |

RunOne TAE Gels - 24 wells

GE-4752 (equivalent to GE-3752)
 Run at 100V (8.33cm/V) for 45 min
 Lane 1, 4, 5, 8, 9, 12, 13,
 16, 17, 20, 21, 24 & 25: SmartMark 200 bp ladder

 Lane 2, 3, 6, 7, 10, 11, 14,
 15, 18, 19, 22 & 23: SmartMark 1 Kb ladder

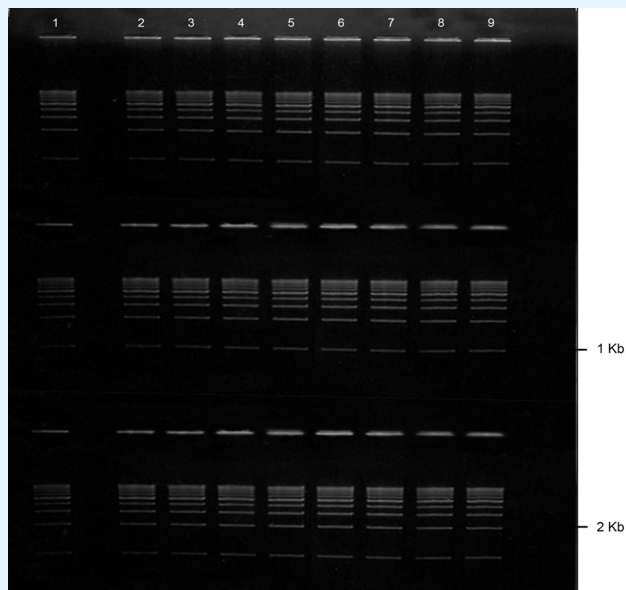


PreCast Gel Format - 2(12+1) & 24+1 well

| Catalog # | Description | Load Volume | Running Distance | Qty |
|-----------|--|-------------|------------------|-------|
| GE-3730 | 1% Agarose TAE w/EtBr Long Gel, 2(12+1) well | 30 µl | 5.5 cm | 5 ea |
| GE-3731 | 0.8% Agarose TAE w/EtBr Long Gel, 2(12+1) well | 30 µl | 5.5 cm | 5 ea |
| GE-3732 | 2% Agarose TAE w/EtBr Long Gel, 2(12+1) well | 30 µl | 5.5 cm | 5 ea |
| GE-3733 | 3% Agarose TAE w/EtBr Long Gel, 2(12+1) well | 30 µl | 5.5 cm | 5 ea |
| GE-3737 | 4% Agarose TAE w/EtBr Long Gel, 2(12+1) well | 30 µl | 5.5 cm | 5 ea |
| GE-3750 | 1% Agarose TAE w/EtBr Landscape Gel, 24+1 well | 11 µl | 5.0 cm | 10 ea |
| GE-3752 | 2% Agarose TAE w/EtBr Landscape Gel, 24+1 well | 11 µl | 5.0 cm | 10 ea |
| GE-3753 | 3% Agarose TAE w/EtBr Landscape Gel, 24+1 well | 11 µl | 5.0 cm | 10 ea |
| GE-3757 | 4% Agarose TAE w/EtBr Landscape Gel, 24+1 well | 11 µl | 5.0 cm | 10 ea |

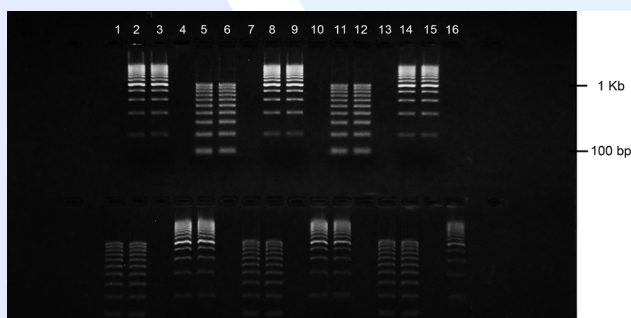
RunOne TAE Gels - 24 & 32 wells

GE-5613 (equivalent to GE-3613)
Run at 100V (8.33cm/V) for 46 min
Lane 1-9: SmartMark 1 Kb ladder



PreCast Gel Format - 3(8+1) well

| Catalog # | Description | Load Volume | Running Distance | Qty |
|-----------|---|-------------|------------------|------|
| GE-3610 | 1% Agarose TAE w/EtBr Long Gel, 3(8+1) well | 30 μ l | 3.6 cm | 5 ea |
| GE-3612 | 2% Agarose TAE w/EtBr Long Gel, 3(8+1) well | 30 μ l | 3.6 cm | 5 ea |
| GE-3613 | 3% Agarose TAE w/EtBr Long Gel, 3(8+1) well | 30 μ l | 3.6 cm | 5 ea |

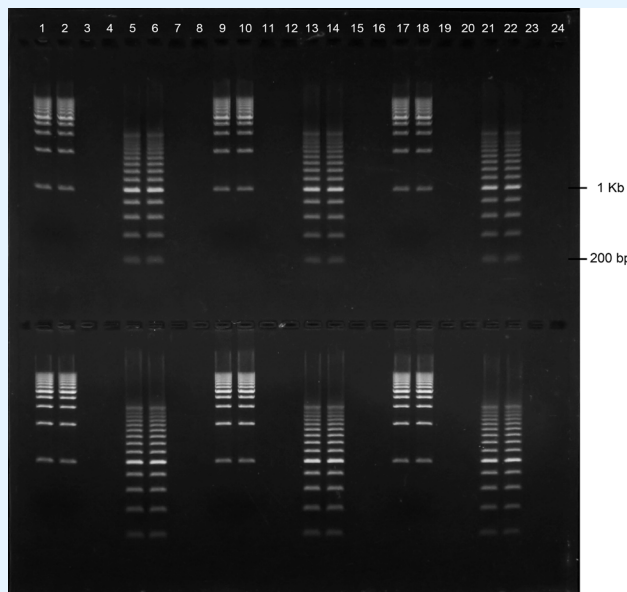


GE-4552 (equivalent to GE-3552)
Run at 100V (8.33cm/V) for 20 min
Lane 2, 3, 8, 9, 14 & 15 (Top): SmartMark 200 bp ladder
Lane 5, 6, 11 & 12 (Top): SmartMark 100 bp ladder

PreCast Gel Format - 2(16+2) well

| Catalog # | Description | Load Volume | Running Distance | Qty |
|-----------|---|-------------|------------------|-------|
| GE-3510 | 1% Agarose TAE w/EtBr Long Gel, 2(16+2) well | 11 μ l | 5.5 cm | 5 ea |
| GE-3512 | 2% Agarose TAE w/EtBr Long Gel, 2(16+2) well | 11 μ l | 5.5 cm | 5 ea |
| GE-3550 | 1% Agarose TAE w/EtBr Landscape Gel, 2(16+2) well | 11 μ l | 2.5 cm | 10 ea |
| GE-3552 | 2% Agarose TAE w/EtBr Landscape Gel, 2(16+2) well | 11 μ l | 2.5 cm | 10 ea |

RunOne TAE Gels - 48 wells



GE-4630 (equivalent to GE-3630)
Run at 100V (8.33cm/V) for 60 min
Lane 1, 2, 9, 10, 17 & 18: SmartMark 1 Kb ladder

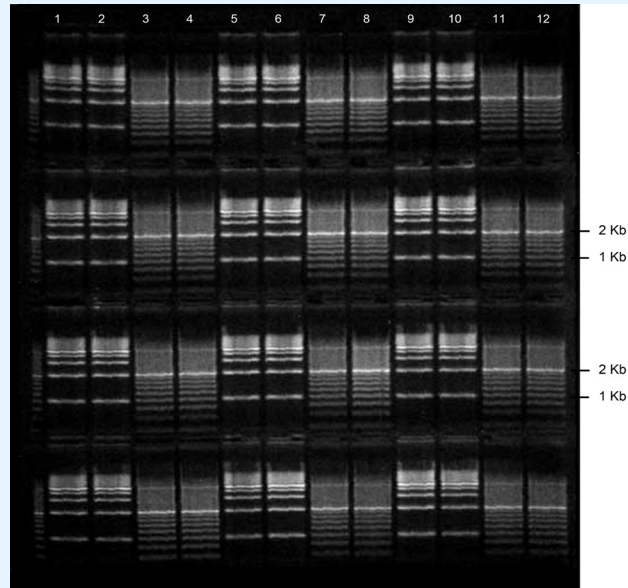
Lane 5, 6, 13, 14, 21 & 22: SmartMark 200 bp ladder

PreCast Gel Format - 2(24+2) & 2(24+1) well

| Catalog # | Description | Load Volume | Running Distance | Qty |
|-----------|---|-------------|------------------|-------|
| GE-3810 | 1% Agarose TAE w/EtBr X-Long Gel, 2(24+2) well* | 15 µl | 11.2 cm | 5 ea |
| GE-3812 | 2% Agarose TAE w/EtBr X-Long Gel, 2(24+2) well* | 15 µl | 11.2 cm | 5 ea |
| GE-3817 | 4% Agarose TAE w/EtBr X-Long Gel, 2(24+2) well* | 15 µl | 11.2 cm | 5 ea |
| GE-3630 | 1% Agarose TAE w/EtBr Long Gel, 2(24+1) well | 11 µl | 5.5 cm | 5 ea |
| GE-3632 | 2% Agarose TAE w/EtBr Long Gel, 2(24+1) well | 11 µl | 5.5 cm | 5 ea |
| GE-3633 | 3% Agarose TAE w/EtBr Long Gel, 2(24+1) well | 11 µl | 5.5 cm | 5 ea |
| GE-3637 | 4% Agarose TAE w/EtBr Long Gel, 2(24+1) well | 11 µl | 5.5 cm | 5 ea |
| GE-5152 | 2% Agarose TAE w/EtBr Long Gel, 2(24+1) well* | 15 µl | 5.5 cm | 5 ea |
| GE-3743 | 3% Agarose TAE w/EtBr Landscape Gel, 2(24+1) well | 11 µl | 2.5 cm | 10 ea |
| GE-3744 | 1.5% Agarose TAE w/EtBr Landscape Gel, 2(24+1) well | 11 µl | 2.5 cm | 10 ea |

* 1.5 mm wells

RunOne TAE Gels - 48 wells



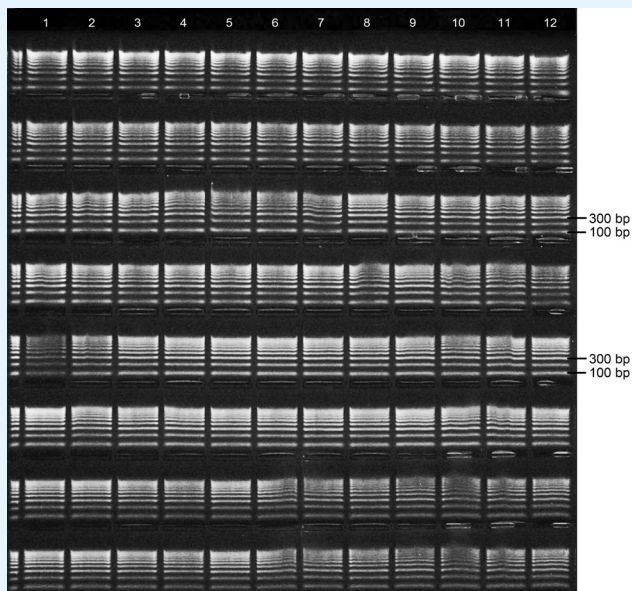
GE-3160 (equivalent to GE-3660)
 Run at 100V (8.33cm/V) for 20 min
 Lane 1, 2, 5, 6, 9 & 10: SmartMark 1 Kb ladder
 Lane 3, 4, 7, 8, 11 & 12: SmartMark 200 bp ladder

PreCast Gel Format - 4(12+1) well

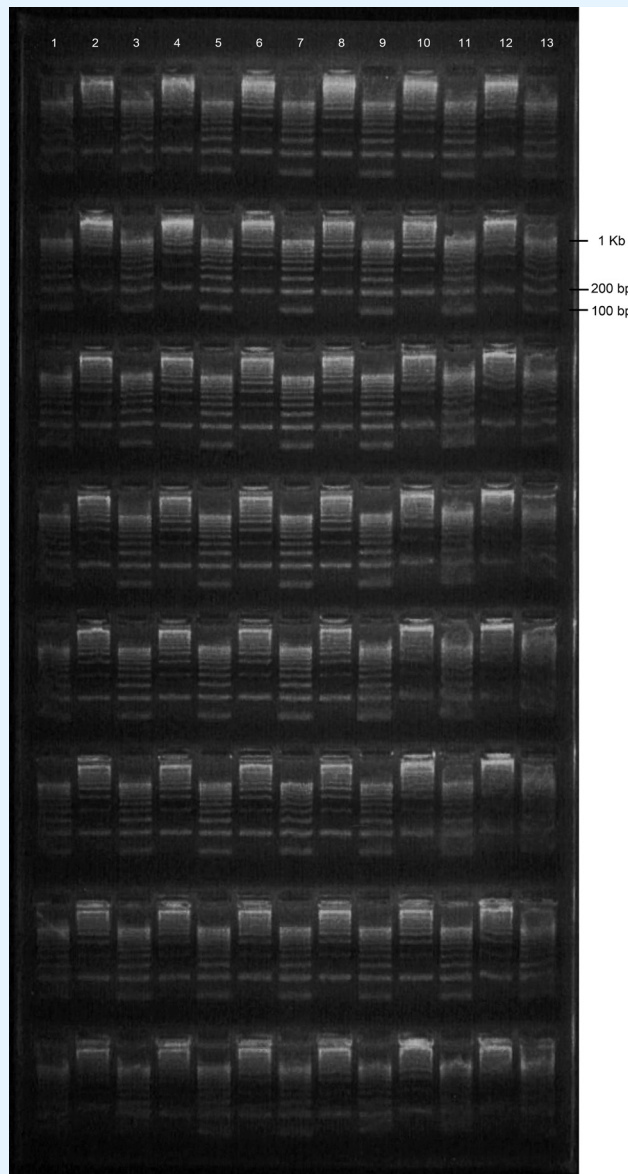
| Catalog # | Description | Load | Running | Qty |
|-----------|---|--------|----------|------|
| | | Volume | Distance | |
| GE-3850 | 1% Agarose TAE w/EtBr X-Long Gel, 4(12+1) well* | 35 µl | 5.5 cm | 5 ea |
| GE-3852 | 2% Agarose TAE w/EtBr X-Long Gel, 4(12+1) well* | 35 µl | 5.5 cm | 5 ea |
| GE-3857 | 4% Agarose TAE w/EtBr X-Long Gel, 4(12+1) well* | 35 µl | 5.5 cm | 5 ea |
| GE-3660 | 1% Agarose TAE w/EtBr Long Gel, 4(12+1) well | 30 µl | 2.7 cm | 5 ea |
| GE-3662 | 2% Agarose TAE w/EtBr Long Gel, 4(12+1) well | 30 µl | 2.7 cm | 5 ea |
| GE-3663 | 3% Agarose TAE w/EtBr Long Gel, 4(12+1) well | 30 µl | 2.7 cm | 5 ea |
| GE-3667 | 4% Agarose TAE w/EtBr Long Gel, 4(12+1) well | 30 µl | 2.7 cm | 5 ea |

* 1.5 mm wells

RunOne TAE Gels - 96 wells



GE-4672 (equivalent to GE-3672)
Run at 100V (8.33cm/V) for 27 min
Lane 1-13: SmartMark 100 bp ladder



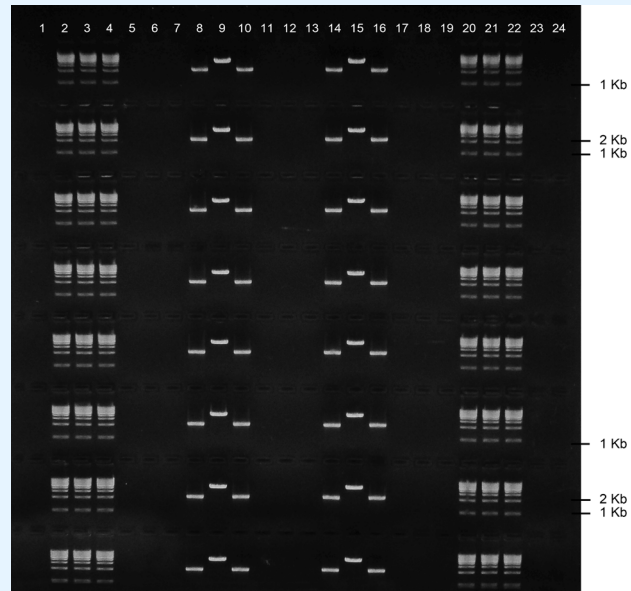
GE-3367 (equivalent to GE-3867)
Run at 200V (8.33cm/V) for 20 min
Lane 1, 3, 5, 7, 9, 11 & 13: SmartMark 100 bp ladder
Lane 2, 4, 6, 8, 10 & 12: SmartMark 200 bp ladder

PreCast Gel Format - 8(12+1) well

| Catalog # | Description | Load | Running | Qty |
|-----------|---|--------|----------|------|
| | | Volume | Distance | |
| GE-3862 | 2% Agarose TAE w/EtBr X-Long Gel, 8(12+1) well* | 35 µl | 2.7 cm | 5 ea |
| GE-3867 | 4% Agarose TAE w/EtBr X-Long Gel, 8(12+1) well* | 35 µl | 2.7 cm | 5 ea |
| GE-3670 | 1% Agarose TAE w/EtBr Long Gel, 8(12+1) well | 30 µl | 1.3 cm | 5 ea |
| GE-3672 | 2% Agarose TAE w/EtBr Long Gel, 8(12+1) well | 30 µl | 1.3 cm | 5 ea |

* 1.5 mm wells

RunOne TAE Gels - 192 wells



GE-4680 (equivalent to GE-3680)
 Run at 100V (8.33cm/V) for 20 min
 Lane 2-4 & 20-22: SmartMark 1 Kb ladder
 Lane 8, 10, 14 & 16: 2112 bp PCR Product
 Lane 9 & 15: 5 Kb PCR Product

PreCast Gel Format - 8(24+1) well

| Catalog # | Description | Load | Running | Qty |
|-----------|--|--------|----------|------|
| | | Volume | Distance | |
| GE-3680 | 1% Agarose TAE w/EtBr Long Gel, 8(24+1) well | 11 µl | 1.3 cm | 5 ea |
| GE-3682 | 2% Agarose TAE w/EtBr Long Gel, 8(24+1) well | 11 µl | 1.3 cm | 5 ea |

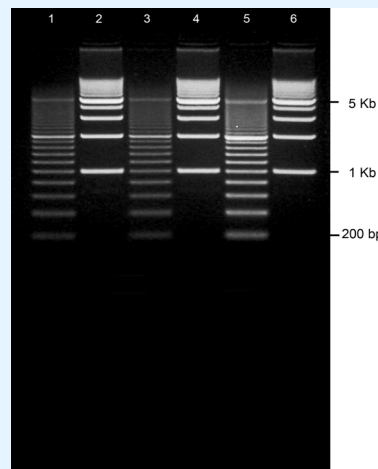
RunOne Precast TBE Gels



- MultiChannel compatible gels

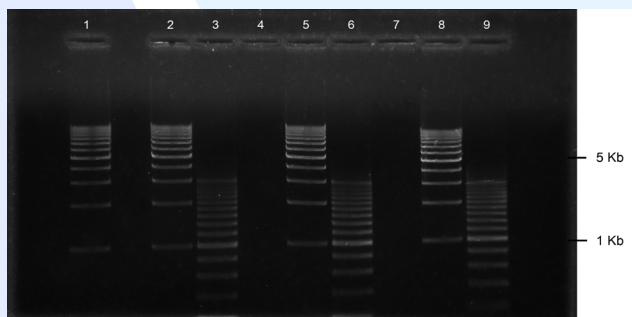
RunOne TBE Gels - 6 & 8 wells

GE-3780 (equivalent to GE-4780)
Run at 100V (8.33cm/V) for 38 min
Lane 1, 3 & 5: SmartMark 200 bp ladder
Lane 2, 4 & 6: SmartMark 1 Kb ladder



PreCast Gel Format - 6 well

| Catalog # | Description | Load | Running | Qty |
|-----------|--|--------|----------|-------|
| | | Volume | Distance | |
| GE-4780 | 1% Agarose TBE w/EtBr Portrait Gel, 6 well | 30 µl | 8.7 cm | 10 ea |
| GE-4782 | 2% Agarose TBE w/EtBr Portrait Gel, 6 well | 30 µl | 8.7 cm | 10 ea |
| GE-4783 | 3% Agarose TBE w/EtBr Portrait Gel, 6 well | 30 µl | 8.7 cm | 10 ea |



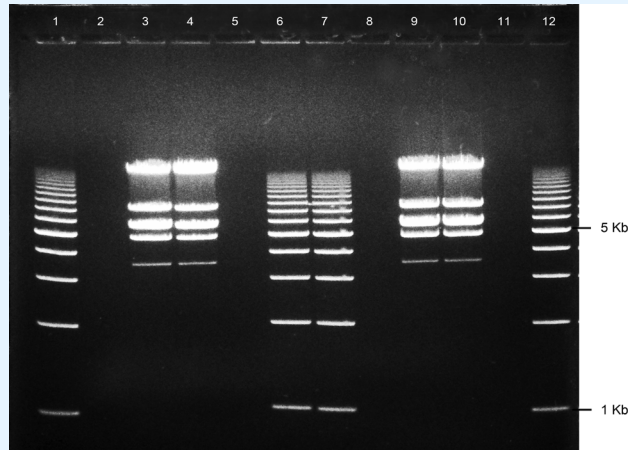
GE-3560 (equivalent to GE-4560)
Run at 100V (8.33cm/V) for 30 min
Lane 1, 2, 5 & 8: SmartMark 1 Kb ladder
Lane 3, 6 & 9: SmartMark 200 bp ladder

PreCast Gel Format - 8+1 well



| Catalog # | Description | Load | Running | Qty |
|-----------|---|--------|----------|-------|
| | | Volume | Distance | |
| GE-4560 | 1% Agarose TBE w/EtBr Landscape Gel, 8+1 well | 30 µl | 5.0 cm | 10 ea |
| GE-4562 | 2% Agarose TBE w/EtBr Landscape Gel, 8+1 well | 30 µl | 5.0 cm | 10 ea |
| GE-4563 | 3% Agarose TBE w/EtBr Landscape Gel, 8+1 well | 30 µl | 5.0 cm | 10 ea |
| GE-4567 | 4% Agarose TBE w/EtBr Landscape Gel, 8+1 well | 30 µl | 5.0 cm | 10 ea |

RunOne TBE Gels - 12 wells

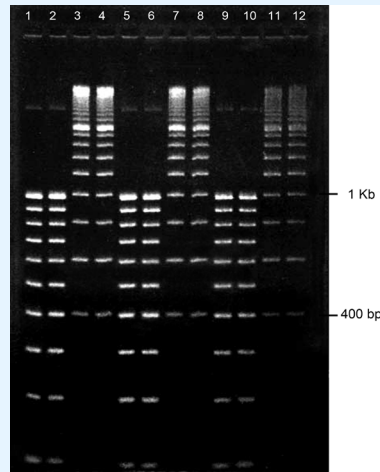


GE-4760
Run at 100V (8.33cm/V) for 85 min
Lane 1, 6, 7 & 12: SmartMark 1 Kb ladder
Lane 3, 4, 9 & 10: Lambda DNA/EcoRI cut

PreCast Gel Format - 12+1 well

| Catalog # | Description | Load Volume | Running Distance | Qty |
|-----------|--|-------------|------------------|-------|
| GE-4720 | 1% Agarose TBE w/EtBr Long Gel, 12+1 well | 30 µl | 11.2 cm | 5 ea |
| GE-4722 | 2% Agarose TBE w/EtBr Long Gel, 12+1 well | 30 µl | 11.2 cm | 5 ea |
| GE-4760 | 1% Agarose TBE w/EtBr Medium Gel, 12+1 well | 30 µl | 8.2 cm | 5 ea |
| GE-4762 | 2% Agarose TBE w/EtBr Medium Gel, 12+1 well | 30 µl | 8.2 cm | 5 ea |
| GE-4100 | 1% Agarose TBE Landscape Gel, 12+1 well | 30 µl | 5.0 cm | 10 ea |
| GE-4600 | 1% Agarose TBE w/EtBr Landscape Gel, 12+1 well | 30 µl | 5.0 cm | 10 ea |
| GE-4602 | 2% Agarose TBE w/EtBr Landscape Gel, 12+1 well | 30 µl | 5.0 cm | 10 ea |
| GE-4603 | 3% Agarose TBE w/EtBr Landscape Gel, 12+1 well | 30 µl | 5.0 cm | 10 ea |
| GE-4607 | 4% Agarose TBE w/EtBr Landscape Gel, 12+1 well | 30 µl | 5.0 cm | 10 ea |

RunOne TBE Gels - 12 wells

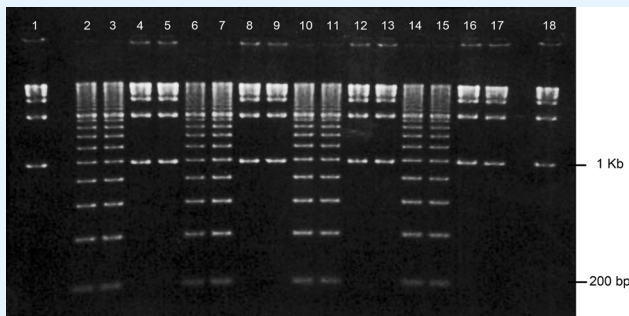


GE-4202 (equivalent to GE-4702)
Run at 100V (8.33cm/V) for 80 min
Lane 1, 2, 5, 6, 9 & 10: SmartMark 100 bp ladder
Lane 3, 4, 7, 8, 11 & 12: SmartMark 200 bp ladder

PreCast Gel Format - 12 well

| Catalog # | Description | Load Volume | Running Distance | Qty |
|------------------|---|--------------------|-------------------------|------------|
| GE-4200 | 1% Agarose TBE Portrait Gel, 12 well | 11 μ l | 8.7 cm | 10 ea |
| GE-4700 | 1% Agarose TBE w/EtBr Portrait Gel, 12 well | 11 μ l | 8.7 cm | 10 ea |
| GE-4702 | 2% Agarose TBE w/EtBr Portrait Gel, 12 well | 11 μ l | 8.7 cm | 10 ea |
| GE-4703 | 3% Agarose TBE w/EtBr Portrait Gel, 12 well | 11 μ l | 8.7 cm | 10 ea |
| GE-4707 | 4% Agarose TBE w/EtBr Portrait Gel, 12 well | 11 μ l | 8.7 cm | 10 ea |

RunOne TBE Gels - 16 wells



GE-4542

Run at 100V (8.33cm/V) for 45 min

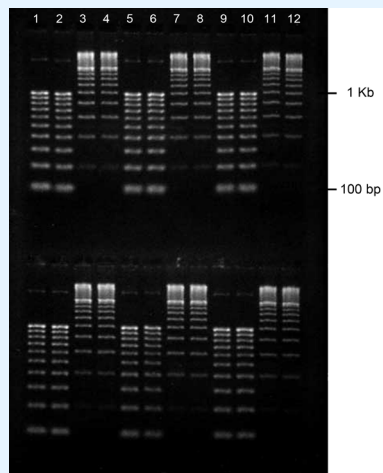
Lane 1, 4, 5, 8, 9, 12, 13, 16, 17 & 18: SmartMark 1 Kb ladder

Lane 2, 3, 6, 7, 10, 11, 14 & 15: SmartMark 200 bp ladder

PreCast Gel Format - 2(8+1) & 16+2 well

| Catalog # | Description | Load Volume | Running Distance | Qty |
|-----------|--|-------------|------------------|-------|
| GE-4912 | 2% Agarose TBE w/EtBr Long Gel, 2(8+1) well | 30µl | 5.5 cm | 5 ea |
| GE-4040 | 1% Agarose TBE Landscape Gel, 16+2 well | 11 µl | 5.0 cm | 10 ea |
| GE-4042 | 2% Agarose TBE Landscape Gel, 16+2 well | 11 µl | 5.0 cm | 10 ea |
| GE-4043 | 3% Agarose TBE Landscape Gel, 16+2 well | 11 µl | 5.0 cm | 10 ea |
| GE-4047 | 4% Agarose TBE Landscape Gel, 16+2 well | 11 µl | 5.0 cm | 10 ea |
| GE-4540 | 1% Agarose TBE w/EtBr Landscape Gel, 16+2 well | 11 µl | 5.0 cm | 10 ea |
| GE-4542 | 2% Agarose TBE w/EtBr Landscape Gel, 16+2 well | 11 µl | 5.0 cm | 10 ea |
| GE-4543 | 3% Agarose TBE w/EtBr Landscape Gel, 16+2 well | 11 µl | 5.0 cm | 10 ea |
| GE-4547 | 4% Agarose TBE w/EtBr Landscape Gel, 16+2 well | 11 µl | 5.0 cm | 10 ea |

RunOne TBE Gels - 24 wells

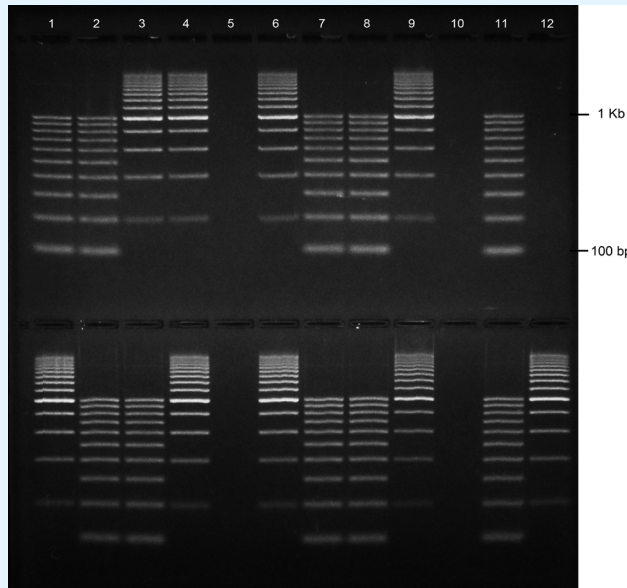


GE-4212 (equivalent to GE-4712)
Run at 100V (8.33cm/V) for 45 min
Lane 1, 2, 5, 6, 9 & 10: SmartMark 100 bp ladder
Lane 3, 4, 7, 8, 11 & 12: SmartMark 200 bp ladder

PreCast Gel Format - 2(12) well

| Catalog # | Description | Load Volume | Running Distance | Qty |
|------------------|--|--------------------|-------------------------|------------|
| GE-4710 | 1% Agarose TBE w/EtBr Portrait Gel, 2(12) well | 11 μ l | 4.5 cm | 10 ea |
| GE-4712 | 2% Agarose TBE w/EtBr Portrait Gel, 2(12) well | 11 μ l | 4.5 cm | 10 ea |
| GE-4713 | 3% Agarose TBE w/EtBr Portrait Gel, 2(12) well | 11 μ l | 4.5 cm | 10 ea |
| GE-4717 | 4% Agarose TBE w/EtBr Portrait Gel, 2(12) well | 11 μ l | 4.5 cm | 10 ea |

RunOne TBE Gels - 24 wells

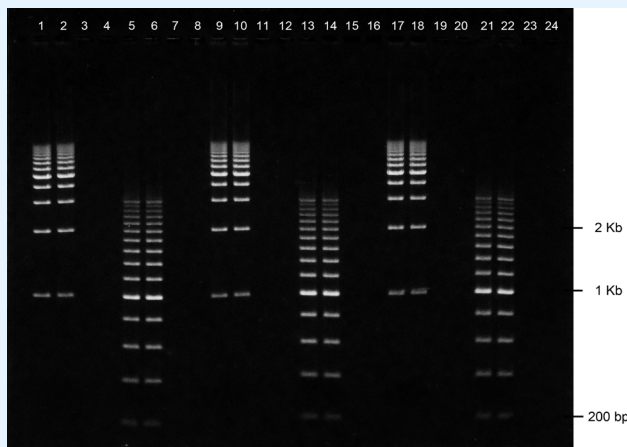


GE-4732
 Run at 100V (8.33cm/V) for 43 min
 Lane 1, 2, 7, 8 & 11 (Top): SmartMark 100 bp ladder
 Lane 3, 4, 6 & 9 (Top): SmartMark 200 bp ladder

PreCast Gel Format - 2(12+1) well

| Catalog # | Description | Load Volume | Running Distance | Qty |
|-----------|---|-------------|------------------|-------|
| GE-4730 | 1% Agarose TBE w/EtBr Long Gel, 2(12+1) well | 30 μ l | 5.5 cm | 5 ea |
| GE-4732 | 2% Agarose TBE w/EtBr Long Gel, 2(12+1) well | 30 μ l | 5.5 cm | 5 ea |
| GE-4733 | 3% Agarose TBE w/EtBr Long Gel, 2(12+1) well | 30 μ l | 5.5 cm | 5 ea |
| GE-4944 | 1.5% Agarose TBE w/EtBr Landscape Gel, 2(12+1) well | 30 μ l | 2.5 cm | 10 ea |

RunOne TBE Gels - 24 wells

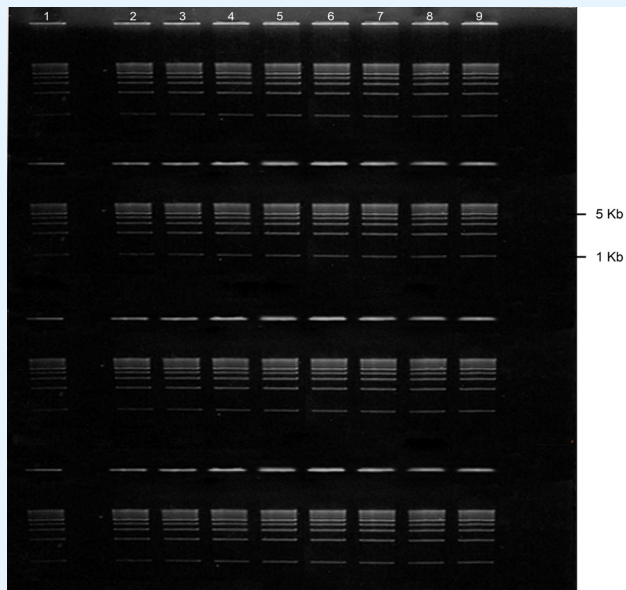


GE-4620
Run at 100V (8.33cm/V) for 70 min
Lane 1, 2, 9, 10, 17 & 18: SmartMark 1 Kb ladder
Lane 5, 6, 13, 14, 21 & 22: SmartMark 200 bp ladder

PreCast Gel Format - 24+1 well

| Catalog # | Description | Load Volume | Running Distance | Qty |
|-----------|--|-------------|------------------|-------|
| GE-4801 | 0.8% Agarose TBE w/EtBr Long Gel, 24+1 well | 11 µl | 11.2 cm | 5 ea |
| GE-4802 | 2% Agarose TBE w/EtBr Long Gel, 24+1 well | 11 µl | 11.2 cm | 5 ea |
| GE-4620 | 1% Agarose TBE w/EtBr Medium Gel, 24+1 well | 11 µl | 8.2 cm | 5 ea |
| GE-4622 | 2% Agarose TBE w/EtBr Medium Gel, 24+1 well | 11 µl | 8.2 cm | 5 ea |
| GE-4750 | 1% Agarose TBE w/EtBr Landscape Gel, 24+1 well | 11 µl | 5.0 cm | 10 ea |
| GE-4752 | 2% Agarose TBE w/EtBr Landscape Gel, 24+1 well | 11 µl | 5.0 cm | 10 ea |
| GE-4753 | 3% Agarose TBE w/EtBr Landscape Gel, 24+1 well | 11 µl | 5.0 cm | 10 ea |
| GE-4757 | 4% Agarose TBE w/EtBr Landscape Gel, 24+1 well | 11 µl | 5.0 cm | 10 ea |

RunOne TBE Gels - 32 wells



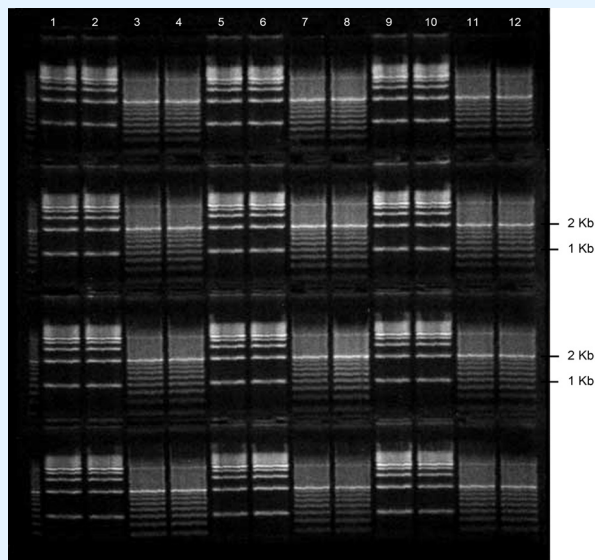
GE-4530
Run at 100V (8.33cm/V) for 46 min
Lane 1-9: SmartMark 1 Kb ladder

PreCast Gel Format - 2(16+2) & 4(8+1)well



| Catalog # | Description | Load Volume | Running Distance | Qty |
|-----------|---|-------------|------------------|-------|
| GE-4512 | 2% Agarose TBE w/EtBr Long Gel, 2(16+2) well | 11 µl | 5.5 cm | 5 ea |
| GE-4513 | 3% Agarose TBE w/EtBr Long Gel, 2(16+2) well | 11 µl | 5.5 cm | 5 ea |
| GE-4530 | 1% Agarose TBE w/EtBr Long Gel, 4(8+1) well | 30 µl | 2.7 cm | 5 ea |
| GE-4532 | 2% Agarose TBE w/EtBr Long Gel, 4(8+1) well | 30 µl | 2.7 cm | 5 ea |
| GE-4550 | 1% Agarose TBE w/EtBr Landscape Gel, 2(16+2) well | 11 µl | 2.5 cm | 10 ea |
| GE-4552 | 2% Agarose TBE w/EtBr Landscape Gel, 2(16+2) well | 11 µl | 2.5 cm | 10 ea |

RunOne TBE Gels - 48 wells



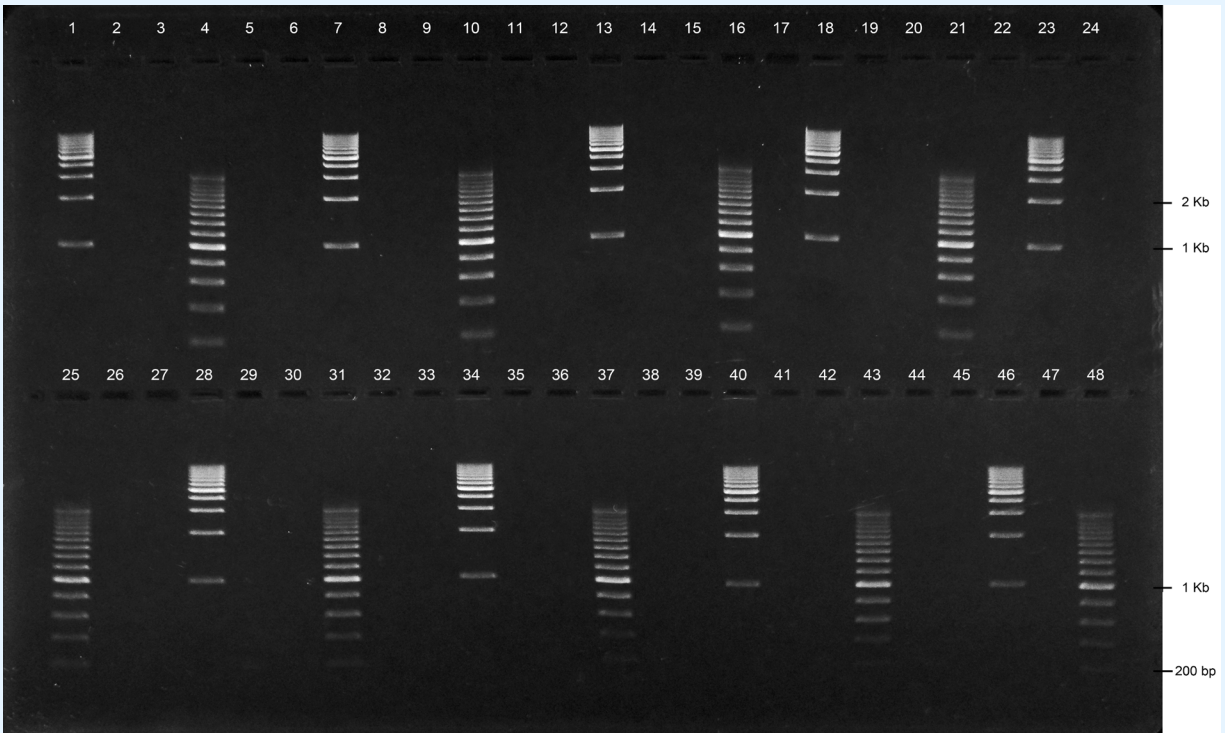
GE-3160 (equivalent to GE-4660)
 Run at 100V (8.33cm/V) for 20 min
 Lane 1, 2, 5, 6, 9 & 10: SmartMark 1 Kb ladder
 Lane 3, 4, 7, 8, 11 & 12: SmartMark 200 bp ladder

PreCast Gel Format - 4(12+1) well

| Catalog # | Description | Load Volume | Running Distance | Qty |
|-----------|---|-------------|------------------|------|
| GE-4850 | 1% Agarose TBE w/EtBr X-Long Gel, 4(12+1) well* | 35 µl | 5.5 cm | 5 ea |
| GE-4852 | 2% Agarose TBE w/EtBr X-Long Gel, 4(12+1) well* | 35 µl | 5.5 cm | 5 ea |
| GE-4857 | 4% Agarose TBE w/EtBr X-Long Gel, 4(12+1) well* | 35 µl | 5.5 cm | 5 ea |
| GE-4660 | 1% Agarose TBE w/EtBr Long Gel, 4(12+1) well | 30 µl | 2.7 cm | 5 ea |
| GE-4662 | 2% Agarose TBE w/EtBr Long Gel, 4(12+1) well | 30 µl | 2.7 cm | 5 ea |
| GE-4663 | 3% Agarose TBE w/EtBr Long Gel, 4(12+1) well | 30 µl | 2.7 cm | 5 ea |
| GE-4667 | 4% Agarose TBE w/EtBr Long Gel, 4(12+1) well | 30 µl | 2.7 cm | 5 ea |
| GE-5662 | 2% Agarose 0.5X TBE w/EtBr Long Gel, 4(12+1) well | 30 µl | 2.7 cm | 5 ea |

* 1.5 mm wells

RunOne TBE Gels - 48 wells



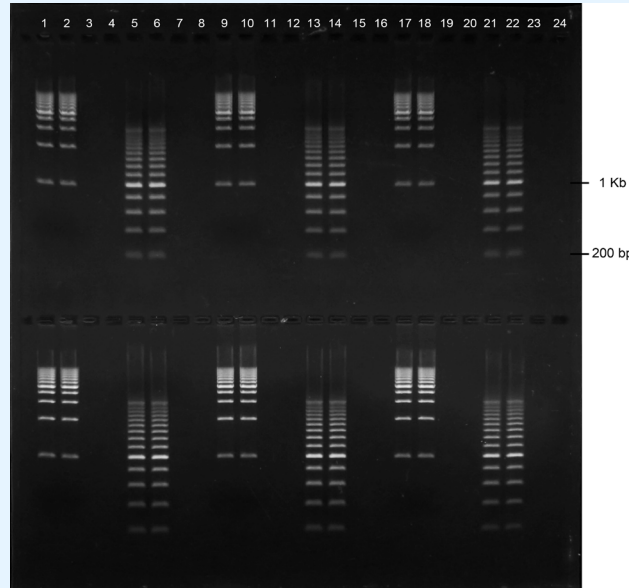
GE-7221
 Run at 120V (8.33cm/V) for 60 min
 Lane 1, 7, 13, 18, 23, 28, 34, 40 & 46: SmartMark 1 Kb ladder
 Lane 4, 10, 16, 21, 25, 31, 37, 43 & 48: SmartMark 200 bp ladder

PreCast Gel Format - 2(24+2) well

| Catalog # | Description | Load Volume | Running Distance | Qty |
|-----------|---|-------------|------------------|------|
| GE-4810 | 1% Agarose TBE w/EtBr X-Long Gel, 2(24+2) well* | 15 µl | 11.2 cm | 5 ea |
| GE-4812 | 2% Agarose TBE w/EtBr X-Long Gel, 2(24+2) well* | 15 µl | 11.2 cm | 5 ea |
| GE-4817 | 4% Agarose TBE w/EtBr X-Long Gel, 2(24+2) well* | 15 µl | 11.2 cm | 5 ea |
| GE-7221 | 1% Agarose TBE w/EtBr XW Gel, 2(24+2) well* | 40 µl | 6.6 cm | 5 ea |
| GE-7222 | 2% Agarose TBE w/EtBr XW Gel, 2(24+2) well* | 40 µl | 6.6 cm | 5 ea |
| GE-7223 | 3% Agarose TBE w/EtBr XW Gel, 2(24+2) well* | 40 µl | 6.6 cm | 5 ea |
| GE-7224 | 4% Agarose TBE w/EtBr XW Gel, 2(24+2) well* | 40 µl | 6.6 cm | 5 ea |

* 1.5 mm wells

RunOne TBE Gels - 48 wells



GE-4630

Run at 100V (8.33cm/V) for 60 min

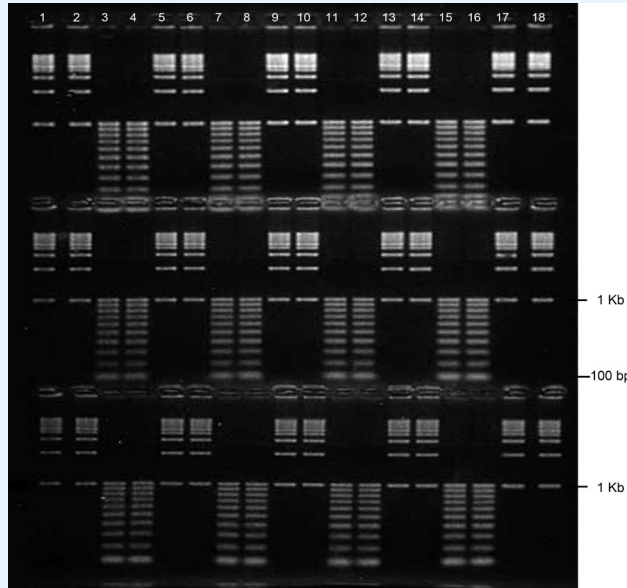
Lane 1, 2, 9, 10, 17 & 18: SmartMark 1 Kb ladder

Lane 5, 6, 13, 14, 21 & 22: SmartMark 200 bp ladder

PreCast Gel Format - 2(24+1) well

| Catalog # | Description | Load Volume | Running Distance | Qty |
|-----------|---|-------------|------------------|-------|
| GE-4130 | 1% Agarose TBE Long Gel, 2(24+1) well | 11 μ l | 5.5 cm | 5 ea |
| GE-4132 | 2% Agarose TBE Long Gel, 2(24+1) well | 11 μ l | 5.5 cm | 5 ea |
| GE-4630 | 1% Agarose TBE w/EtBr Long Gel, 2(24+1) well | 11 μ l | 5.5 cm | 5 ea |
| GE-4632 | 2% Agarose TBE w/EtBr Long Gel, 2(24+1) well | 11 μ l | 5.5 cm | 5 ea |
| GE-4633 | 3% Agarose TBE w/EtBr Long Gel, 2(24+1) well | 11 μ l | 5.5 cm | 5 ea |
| GE-4637 | 4% Agarose TBE w/EtBr Long Gel, 2(24+1) well | 11 μ l | 5.5 cm | 5 ea |
| GE-4740 | 1% Agarose TBE w/EtBr Landscape Gel, 2(24+1) well | 11 μ l | 2.5 cm | 10 ea |
| GE-4742 | 2% Agarose TBE w/EtBr Landscape Gel, 2(24+1) well | 11 μ l | 2.5 cm | 10 ea |
| GE-4743 | 3% Agarose TBE w/EtBr Landscape Gel, 2(24+1) well | 11 μ l | 2.5 cm | 10 ea |

RunOne TBE Gels - 48 wells

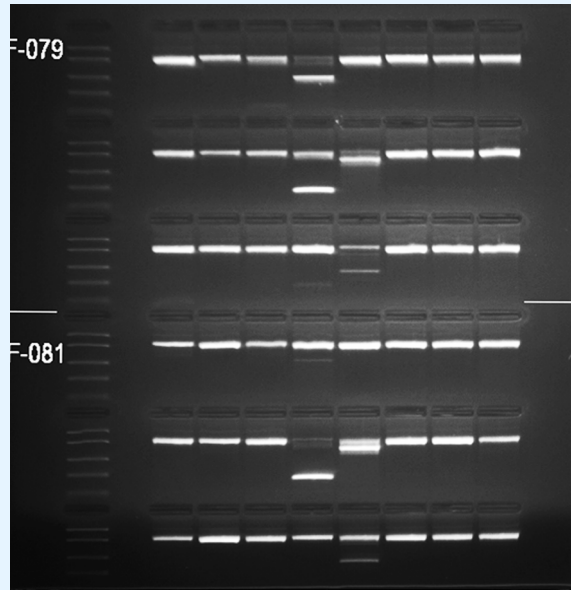


GE-3082 (equivalent to GE-4582)
 Run at 100V (8.33cm/V) for 40 min
 Lane 1, 2, 5, 6, 9, 10, 13, 14, 17 & 18: SmartMark 1 Kb ladder
 Lane 3, 4, 7, 8, 11, 12, 15 & 16: SmartMark 100 bp ladder

PreCast Gel Format - 3(16+2) well

| Catalog # | Description | Load Volume | Running Distance | Qty |
|-----------|--|-------------|------------------|------|
| GE-4580 | 1% Agarose TBE w/EtBr Long Gel, 3(16+2) well | 11 µl | 3.6 cm | 5 ea |
| GE-4582 | 2% Agarose TBE w/EtBr Long Gel, 3(16+2) well | 11 µl | 3.6 cm | 5 ea |
| GE-4583 | 3% Agarose TBE w/EtBr Long Gel, 3(16+2) well | 11 µl | 3.6 cm | 5 ea |
| GE-4587 | 4% Agarose TBE w/EtBr Long Gel, 3(16+2) well | 11 µl | 3.6 cm | 5 ea |

RunOne TBE Gels - 48 wells



GE-4592
Gel image are courtesy of customers at:
Blood Center Wisconsin

PreCast Gel Format - 6(8+1) well

| Catalog # | Description | Load Volume | Running Distance | Qty |
|------------------|---|--------------------|-------------------------|------------|
| GE-4590 | 1% Agarose TBE w/EtBr Long Gel, 6(8+1) well | 30 µl | 1.7 cm | 5 ea |
| GE-4592 | 2% Agarose TBE w/EtBr Long Gel, 6(8+1) well | 30 µl | 1.7 cm | 5 ea |
| GE-4593 | 3% Agarose TBE w/EtBr Long Gel, 6(8+1) well | 30 µl | 1.7 cm | 5 ea |
| GE-4594 | 1.5% Agarose TBE w/EtBr Long Gel, 6(8+1) well | 30 µl | 1.7 cm | 5 ea |

RunOne TBE Gels - 96 wells

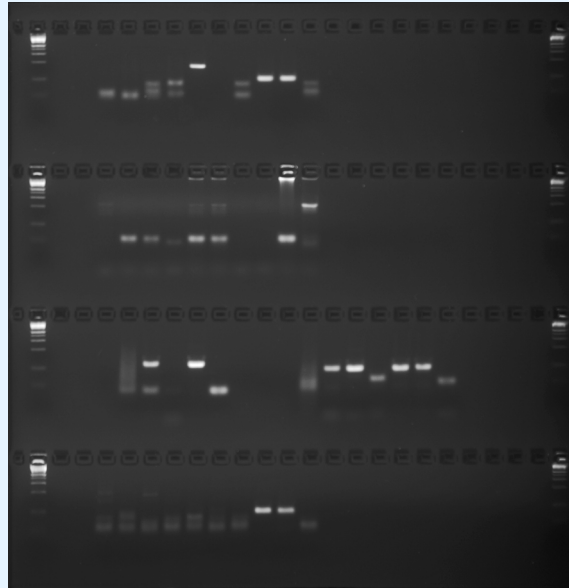


PreCast Gel Format - 4(24+2) well

| Catalog # | Description | Load Volume | Running Distance | Qty |
|-----------|--|-------------|------------------|------|
| GE-7421 | 1% Agarose TBE w/EtBr XW Gel, 4(24+2) well* | 40 µl | 3.1 cm | 5 ea |
| GE-7422 | 2% Agarose TBE w/EtBr XW Gel, 4(24+2) well* | 40 µl | 3.1 cm | 5 ea |
| GE-7423 | 3% Agarose TBE w/EtBr XW Gel, 4(24+2) well* | 40 µl | 3.1 cm | 5 ea |
| GE-7424 | 4% Agarose TBE w/EtBr XW Gel, 4(24+2) well* | 40 µl | 3.1 cm | 5 ea |
| GE-7426 | 2% Agarose 0.5X TBE w/EtBr XW Gel, 4(24+2) well* | 40 µl | 3.1 cm | 5 ea |

* 1.5 mm wells

RunOne TBE Gels - 96 wells



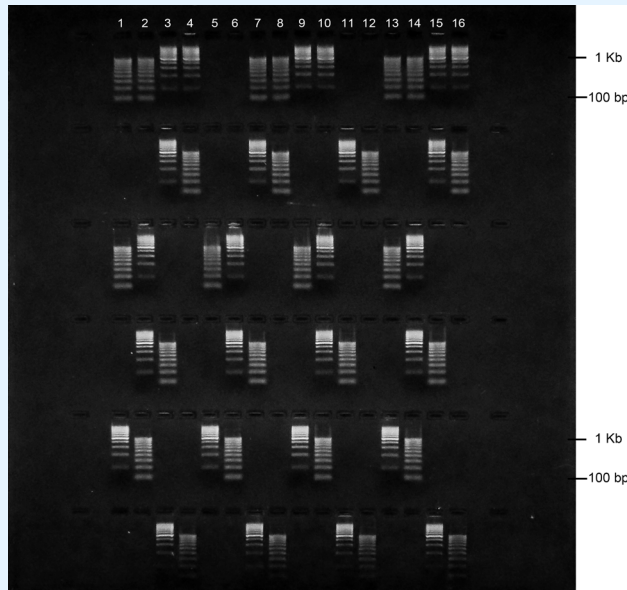
GE-4647C
Gel image are courtesy of customers at:
CAHFS, UC Davis

PreCast Gel Format - 4(24+1) well

| Catalog # | Description | Load Volume | Running Distance | Qty |
|-----------|---|-------------|------------------|------|
| GE-4147 | 4% Agarose TBE Long Gel, 4(24+1) well | 11 μ l | 2.7 cm | 5 ea |
| GE-4640 | 1% Agarose TBE w/EtBr Long Gel, 4(24+1) well | 11 μ l | 2.7 cm | 5 ea |
| GE-4642 | 2% Agarose TBE w/EtBr Long Gel, 4(24+1) well | 11 μ l | 2.7 cm | 5 ea |
| GE-4643 | 3% Agarose TBE w/EtBr Long Gel, 4(24+1) well | 11 μ l | 2.7 cm | 5 ea |
| GE-4647 | 4% Agarose TBE w/EtBr Long Gel, 4(24+1) well | 11 μ l | 2.7 cm | 5 ea |
| GE-4647C | 4% Agarose TBE w/EtBr Long Gel, 4(24+1) well* | 11 μ l | 2.7 cm | 5 ea |
| GE-5642 | 2% Agarose 0.5X TBE w/EtBr Long Gel, 4(24+1) well | 11 μ l | 2.7 cm | 5 ea |

* 1.5 mm wells

RunOne TBE Gels - 96 wells



GE-4572

Run at 100V (8.33cm/V) for 20 min

Lane 1, 2, 7, 8, 13 & 14 (Top): SmartMark 100 bp ladder

Lane 3, 4, 9, 10, 15 & 16 (Top): SmartMark 200 bp ladder

PreCast Gel Format - 6(16+2) well

| Catalog # | Description | Load | Running | Qty |
|-----------|--|--------|----------|------|
| | | Volume | Distance | |
| GE-4570 | 1% Agarose TBE w/EtBr Long Gel, 6(16+2) well | 11 µl | 1.7 cm | 5 ea |
| GE-4572 | 2% Agarose TBE w/EtBr Long Gel, 6(16+2) well | 11 µl | 1.7 cm | 5 ea |
| GE-4573 | 3% Agarose TBE w/EtBr Long Gel, 6(16+2) well | 11 µl | 1.7 cm | 5 ea |
| GE-4577 | 4% Agarose TBE w/EtBr Long Gel, 6(16+2) well | 11 µl | 1.7 cm | 5 ea |

RunOne TBE Gels - 96 wells



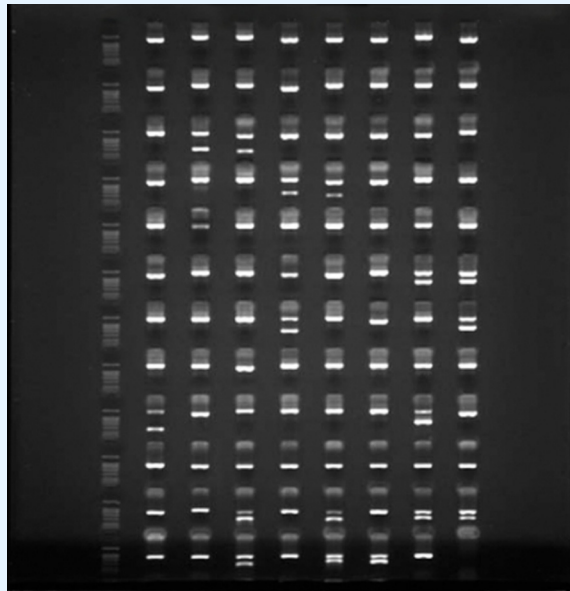
GE-5672
Gel image are courtesy of customers at:
City of Hope

PreCast Gel Format - 8(12+1) well

| Catalog # | Description | Load Volume | Running Distance | Qty |
|-----------|---|-------------|------------------|------|
| GE-4860 | 1% Agarose TBE w/EtBr X-Long Gel, 8(12+1) well* | 35 µl | 2.7 cm | 5 ea |
| GE-4862 | 2% Agarose TBE w/EtBr X-Long Gel, 8(12+1) well* | 35 µl | 2.7 cm | 5 ea |
| GE-4867 | 4% Agarose TBE w/EtBr X-Long Gel, 8(12+1) well* | 35 µl | 2.7 cm | 5 ea |
| GE-4670 | 1% Agarose TBE w/EtBr Long Gel, 8(12+1) well | 30 µl | 1.3 cm | 5 ea |
| GE-4672 | 2% Agarose TBE w/EtBr Long Gel, 8(12+1) well | 30 µl | 1.3 cm | 5 ea |
| GE-4673 | 3% Agarose TBE w/EtBr Long Gel, 8(12+1) well | 30 µl | 1.3 cm | 5 ea |
| GE-4677 | 4% Agarose TBE w/EtBr Long Gel, 8(12+1) well | 30 µl | 1.3 cm | 5 ea |
| GE-5672 | 2% Agarose 0.5X TBE w/EtBr Long Gel, 8(12+1) well | 30 µl | 1.3 cm | 5 ea |

* 1.5 mm wells

RunOne TBE Gels - 96 wells



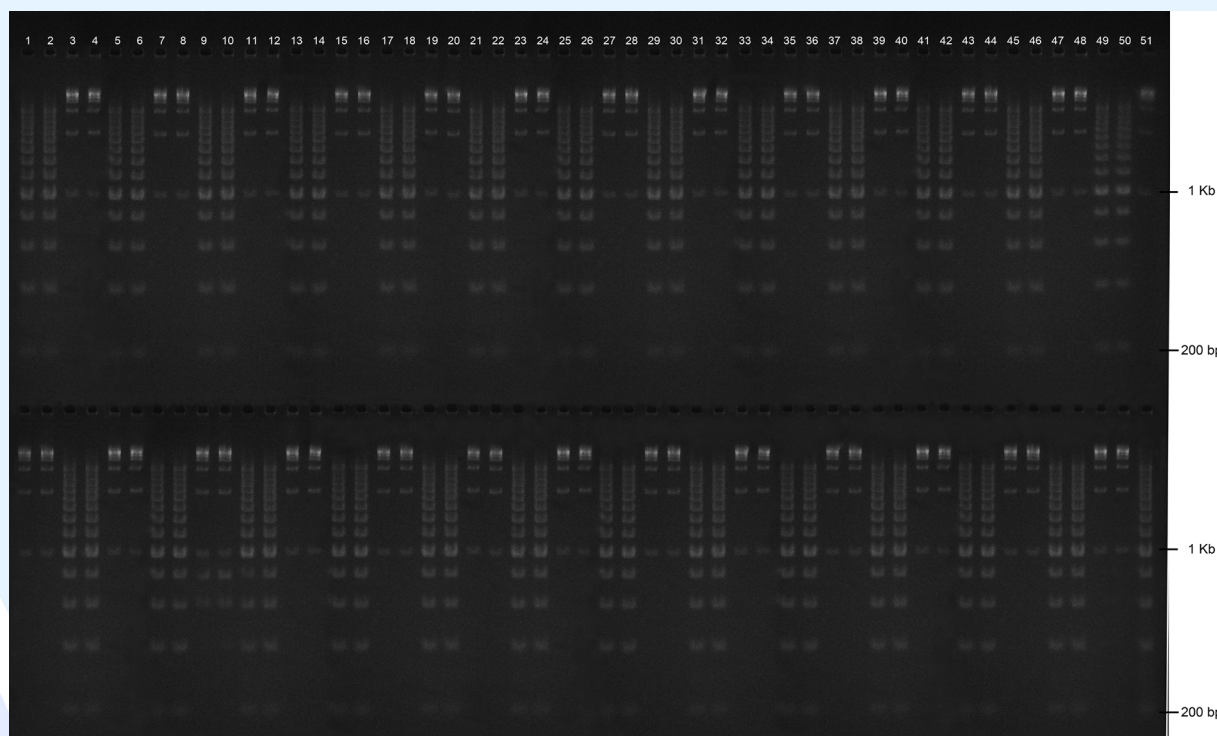
GE-5682
Gel image are courtesy of Olerup SSP® AB

PreCast Gel Format - 12(8+1) & 12(9) well

| Catalog # | Description | Load | Running | Qty |
|-----------|--|--------|----------|------|
| | | Volume | Distance | |
| GE-4650 | 1% Agarose TBE w/EtBr Long Gel, 12(8+1) well | 30 µl | 0.8 cm | 5 ea |
| GE-4652 | 2% Agarose TBE w/EtBr Long Gel, 12(8+1) well | 30 µl | 0.8 cm | 5 ea |
| GE-5652 | 2% Agarose 0.5X TBE w/EtBr Long Gel, 12(8+1) well | 30 µl | 0.8 cm | 5 ea |
| GE-5682 | 2% Agarose 0.5X TBE w/EtBr Long Gel, 12(9) small well† | 30 µl | 0.8 cm | 5 ea |
| GE-5685 | 2.5% Agarose TBE w/EtBr Long Gel, 12(9) small well† | 30 µl | 0.8 cm | 5 ea |

† Recommended for use with Olerup SSP HLA Kits

RunOne TBE Gels - 100 wells



GE-7252

Run at 150V (8.33cm/V) for 60 min

Lane 1, 2, 5, 6, 9, 10, 13, 14, 17, 18, 21, 22, 25, 26, 29, 30, 33, 34, 37, 38, 41, 42, 45, 46, 49 & 50 (Top): SmartMark 200 bp ladder

Lane 3, 4, 7, 8, 11, 12, 15, 16, 19, 20, 23, 24, 27, 28, 31, 32, 35, 36, 39, 40, 43, 44, 47, 48 & 51 (Top): SmartMark 1 Kb ladder

PreCast Gel Format - 2(51) & 4(25) well

| Catalog # | Description | Load | Running | Qty |
|-----------|--|--------|----------|------|
| | | Volume | Distance | |
| GE-7251 | 1% Agarose TBE w/EtBr XW Gel, 2(51) well* | 15 µl | 6.6 cm | 5 ea |
| GE-7252 | 2% Agarose TBE w/EtBr XW Gel, 2(51) well* | 15 µl | 6.6 cm | 5 ea |
| GE-7253 | 3% Agarose TBE w/EtBr XW Gel, 2(51) well* | 15 µl | 6.6 cm | 5 ea |
| GE-7254 | 4% Agarose TBE w/EtBr XW Gel, 2(51) well* | 15 µl | 6.6 cm | 5 ea |
| GE-4975 | 2.5% Agarose TBE w/EtBr XW Gel, 2(51) well* | 15 µl | 6.6 cm | 5 ea |
| GE-7436 | 2% Agarose 0.5X TBE w/EtBr XW Gel, 4(25) well* | 43 µl | 3.1 cm | 5 ea |

* 1.5 mm wells

RunOne Precast

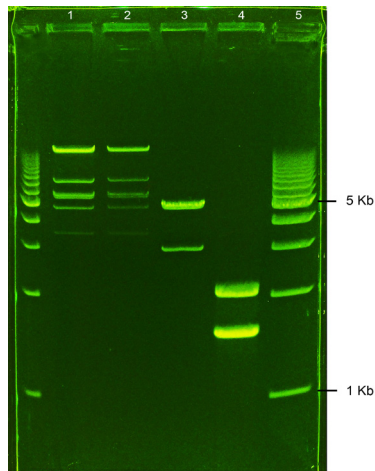


GreenGel™



- MultiChannel compatible gels

GreenGel™



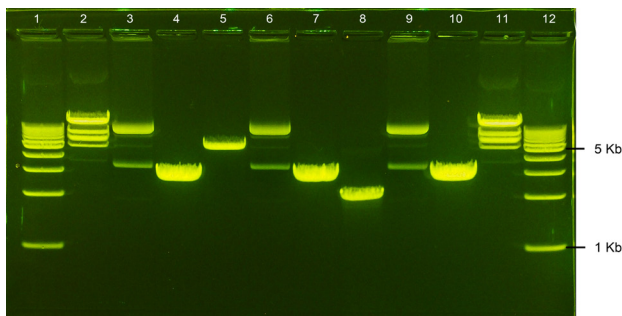
GG5100
Run at 75V (8.33cm/V) for 75 min
Lane 1, 2: Lambda/EcoRI Marker
Lane 3: 3 Kb & 5 Kb PCR fragments
Lane 4: 1545 bp & 2112 bp PCR product
Lane 5: SmartMark 1 Kb ladder

PreCast Gel Formats - 1+1, 2+1, 5+1 & 5+2 well

| Catalog # | Description | Load Volume | Running Distance | Qty |
|-----------|--|-------------|------------------|-------|
| GG5161 | 0.8% Agarose TAE w/GelGreen Long Prep Gel, 1+1 well* | 300 µl | 11.2 cm | 5 ea |
| GG5200 | 1% Agarose TAE w/GelGreen Long Prep Gel, 2+1 well* | 250 µl | 11.2 cm | 5 ea |
| GG5177 | 1% Agarose TAE w/GelGreen Medium Prep Gel, 2+1 well* | 250 µl | 8.2 cm | 5 ea |
| GG5100 | 1% Agarose TAE w/GelGreen Portrait Prep Gel, 5+1 well* | 70 µl | 8.7 cm | 10 ea |
| GG3690 | 1% Agarose TAE w/GelGreen Medium Prep Gel, 5+2 well* | 75&112 µl | 8.2 cm | 5 ea |

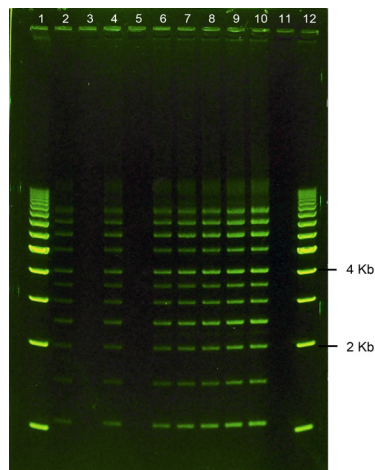
* 1.5 mm wells

GreenGel™



GG3600

Run at 100V (8.33cm/V) for 45 min
 Lane 1 & 12: SmartMark 1 Kb ladder
 Lane 2 & 11: Lambda/EcoRI Marker
 Lane 3, 6 & 9: Plasmid DNA
 Lane 4, 7 & 10: 3 Kb PCR Fragment
 Lane 5: 5 Kb PCR Fragment
 Lane 8: 2112 bp PCR Fragment



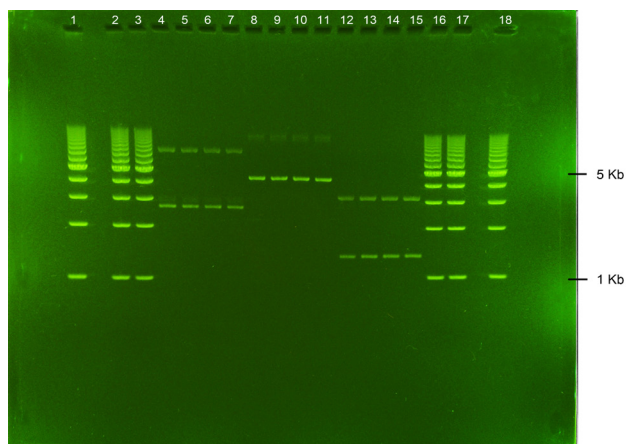
GG3701

Run at 100V (8.33cm/V) for 80 min
 Lane 1 & 12: SmartMark 1 Kb ladder
 Lane 2, 4, 6-10: Supercoiled DNA ladder

PreCast Gel Formats - 12+1 well , 10 & 12 well

| Catalog # | Description | Load | Running | Qty |
|-----------|--|--------|----------|-------|
| | | Volume | Distance | |
| GG3720 | 1% Agarose TAE w/GelGreen Long Gel, 12+1 well | 30 µl | 11.2 cm | 5 ea |
| GG3724 | 1.5% Agarose TAE w/GelGreen Long Gel, 12+1 well | 30 µl | 11.2 cm | 5 ea |
| GG3727 | 4% Agarose TAE w/GelGreen Long Gel, 12+1 well | 30 µl | 11.2 cm | 5 ea |
| GG3600 | 1% Agarose TAE w/GelGreen Landscape Gel, 12+1 well | 30 µl | 5.0 cm | 10 ea |
| GG4602 | 2% Agarose TBE w/GelGreen Landscape Gel, 12+1 well | 30 µl | 5.0 cm | 10 ea |
| GG3870 | 1% Agarose TAE w/GelGreen Portrait Gel, 10 well | 15 µl | 8.7 cm | 10 ea |
| GG3701 | 0.8% Agarose TAE w/GelGreen Portrait Gel, 12 well | 11 µl | 8.7 cm | 10 ea |

GreenGel™



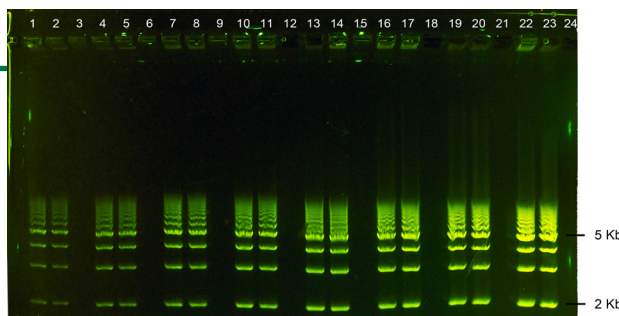
GG5331
Run at 100V (8.33cm/V) for 60 min
Lane 1, 2, 3, 16, 17 & 18: SmartMark 1 Kb ladder
Lane 4-7: 15 ng Supercoiled DNA Sample 1
Lane 8-11: 15 ng Supercoiled DNA Sample 2
Lane 12-15: 15 ng Supercoiled DNA Sample 3

PreCast Gel Formats - 16+2 & 2(16+2) well



| Catalog # | Description | Load Volume | Running Distance | Qty |
|-----------|---|-------------|------------------|-------|
| GG5331 | 0.8% Agarose TAE w/GelGreen Medium Gel, 16+2 well | 11 µl | 8.2 cm | 5 ea |
| GG3552 | 2% Agarose TAE w/GelGreen Landscape Gel, 2(16+2) well | 11 µl | 2.5 cm | 10 ea |

GG4750 (equivalent to GG3750)
Run at 100V (8.33cm/V) for 70 min
Lane 1, 2, 4, 5, 7, 8, 10, 11, 13, 14, 16, 17,
19, 20, 22 & 23: SmartMark 1 Kb ladder

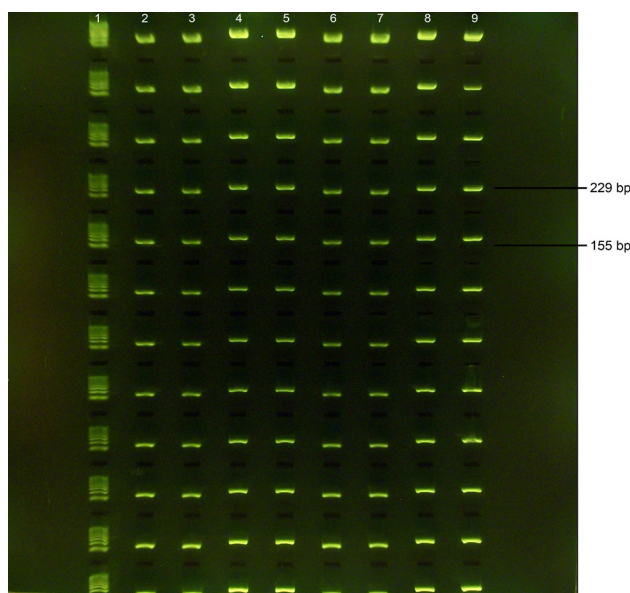


PreCast Gel Formats - 2(12+1) & 24+1 well



| Catalog # | Description | Load Volume | Running Distance | Qty |
|-----------|--|-------------|------------------|------|
| GG3732 | 2% Agarose TAE w/GelGreen Long Gel, 2(12+1) well | 30 µl | 5.5 cm | 5 ea |
| GG3750 | 1% Agarose TAE w/GelGreen Landscape Gel, 24+1 well | 11 µl | 5.0 cm | 5 ea |

GreenGel™



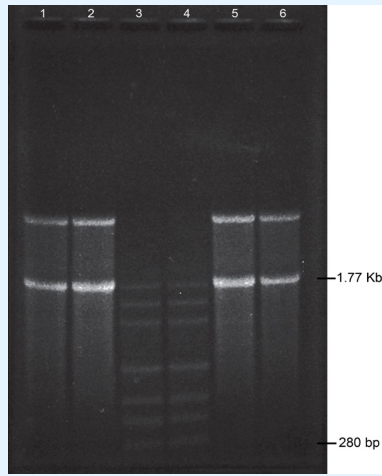
GG5685
Run at 100V (8.33cm/V) for 15 min
Lane 1: SmartMark 100 bp ladder
Lane 2-9: 229 bp or 155 bp PCR Fragments

PreCast Gel Formats - 2(24+1), 4(12+1), 12(9) well

| Catalog # | Description | Load | Running | Qty |
|-----------|---|--------|----------|------|
| | | Volume | Distance | |
| GG3631 | 0.8% Agarose TAE w/GelGreen Long Gel, 2(24+1) well | 11 µl | 5.5 cm | 5 ea |
| GG4632 | 2% Agarose TBE w/GelGreen Long Gel, 2(24+1) well | 11 µl | 5.5 cm | 5 ea |
| GG4633 | 3% Agarose TBE w/GelGreen Long Gel, 2(24+1) well | 11 µl | 5.5 cm | 5 ea |
| GG4660 | 1% Agarose TBE w/GelGreen Long Gel, 4(12+1) well | 30 µl | 2.7 cm | 5 ea |
| GG5682 | 2% Agarose 0.5xTBE w/GelGreen Long Gel, 12(9) well† | 11 µl | 0.8 cm | 5 ea |
| GG5685 | 2.5% Agarose TBE w/GelGreen Long Gel, 12(9) well† | 11 µl | 0.8 cm | 5 ea |

† Recommended for use with Olerup SSP HLA Kits

RunOne MOPS Gels - 6 wells



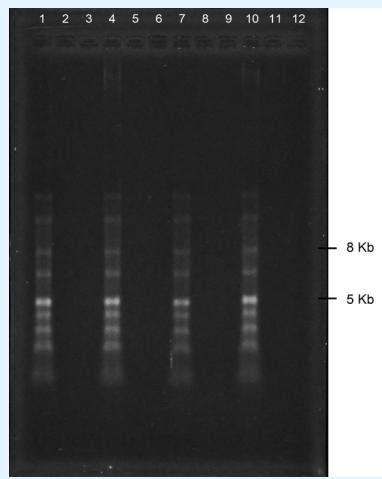
GE-6000
Run at 100V (8.33cm/V) for 80 min
Lane 1, 2, 5 & 6: Total RNA (denatured)
Lane 3 & 4: 0.16-1.77 Kb RNA Standard (denatured)

PreCast Gel Format - 6 well

| Catalog # | Description | Load | Running | Qty |
|-----------|---|------------|----------|-------|
| | | Volume | Distance | |
| GE-6000 | 1.25% Agarose MOPS Portrait Gel, 6 well | 30 μ l | 8.7 cm | 10 ea |
| GE-6500 | 1.25% Agarose MOPS w/EtBr Portrait Gel, 6 well | 30 μ l | 8.7 cm | 10 ea |
| GE-6800 | 1.25% Agarose MOPS Kit - 6 well Portrait (GE-6000) [†] | 30 μ l | 8.7 cm | 1 kit |

[†] MOPS Kits include 1 box of MOPS gel, 1 ml RNA Denaturing Sample Buffer (reorder EC-1021), 1 Liter 10X RNA MOPS Running Buffer (reorder EC-1020)

RunOne MOPS Gels - 12 wells



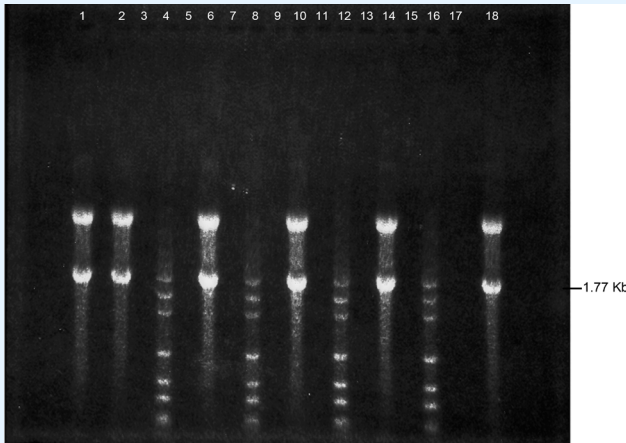
GE-6010
Run at 100V (8.33cm/V) for 60 min
Lane 1, 4, 7 & 10: 1 Kb RNA ladder

PreCast Gel Format - 12+1 well & 12 well

| Catalog # | Description | Load Volume | Running Distance | Qty |
|-----------|---|-------------|------------------|-------|
| GE-6512 | 2% Agarose MOPS w/EtBr Portrait Gel, 12 well | 11 µl | 8.7 cm | 10 ea |
| GE-6912 | 2% Agarose MOPS Kit - 12 well Portrait w/ EtBr (GE-6512)† | 11 µl | 8.7 cm | 1 kit |
| GE-6020 | 1.25 % Agarose MOPS Medium Gel, 12+1 well | 30 µl | 8.2 cm | 5 ea |
| GE-6802 | 1.25% Agarose MOPS Kit - 12+1 well Medium (GE-6020)† | 30 µl | 8.2 cm | 1 kit |
| GE-6010 | 1.25% Agarose MOPS Portrait Gel, 12 well | 11 µl | 8.7 cm | 10 ea |
| GE-6510 | 1.25% Agarose MOPS w/EtBr Portrait Gel, 12 well | 11 µl | 8.7 cm | 10 ea |
| GE-6801 | 1.25% Agarose MOPS Kit - 12 well Portrait (GE-6010)† | 11 µl | 8.7 cm | 1 kit |

† MOPS Kits include 1 box of MOPS gel, 1 ml RNA Denaturing Sample Buffer (reorder EC-1021), 1 Liter 10X RNA MOPS Running Buffer (reorder EC-1020)

RunOne MOPS Gels - 16 wells



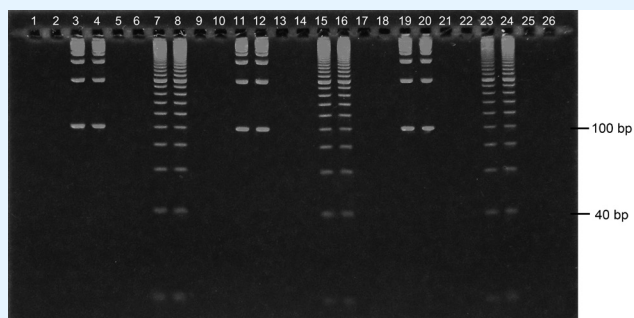
GE-6030
 Run at 100V (8.33cm/V) for 90 min
 Lane 1, 2, 6, 10, 14 & 18: Total RNA (denatured)
 Lane 4, 8, 12 & 16: 0.16-1.77 Kb RNA (denatured)

PreCast Gel Format - 16+2 well

| Catalog # | Description | Load Volume | Running Distance | Qty |
|-----------|--|-------------|------------------|-------|
| GE-6030 | 1.25% Agarose MOPS Medium Gel, 16+2 well | 11 μ l | 8.2 cm | 5 ea |
| GE-6803 | 1.25% Agarose MOPS Kit - 16+2 well Medium (GE-6030) [†] | 11 μ l | 8.2 cm | 1 kit |
| GE-6813 | 1.25% Agarose MOPS Kit - 16+2 well Medium, w/EtBr (GE-6530) [†] | 11 μ l | 8.2 cm | 1 kit |

[†] MOPS Kits include 1 box of MOPS gel, 1 ml RNA Denaturing Sample Buffer (reorder EC-1021), 1 Liter 10X RNA MOPS Running Buffer (reorder EC-1020)

RunOne PAG Gels - 16+2 & 26 wells



GE-2118
Run at 100V (8.33cm/V) for 60 min
Lane 3, 4, 11, 12, 19 & 20: SmartMark 100 bp ladder
Lane 7, 8, 15, 16, 23 & 24: SmartMark 20 bp ladder

PreCast Gel Format - 26 well

Catalog # Description

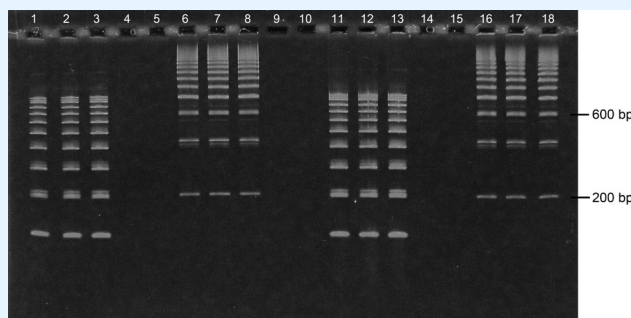
GE-2118 10% Ultra PAGE TBE Landscape Gel, 26 well

Load Running

Volume Distance Qty

5 µl 5.0 cm 10 ea

GE-2143
Run at 100V (8.33cm/V) for 70 min
Lane 1, 2, 3, 11, 12 & 13: SmartMark 100 bp ladder
Lane 6, 7, 8, 16, 17 & 18: SmartMark 200 bp ladder



PreCast Gel Format - 16+2 well

Catalog # Description

GE-2142 7.5% PAGE TBE Landscape Gel, 16+2 well

GE-2143 10% PAGE TBE Landscape Gel, 16+2 well

GE-2148 10% Ultra PAGE TBE Landscape Gel, 16+2 well

Load Running

Volume Distance Qty

7 µl 5.0 cm 10 ea

7 µl 5.0 cm 10 ea

7 µl 5.0 cm 10 ea

Now you have the gels...

Run them in here:



RunOne™ Electrophoresis System w/ Time Control

Short Run Times

Start seeing separation in as little as 7 minutes!
A 1% gel with 96-wells can finish its run in less than 20 minutes!

No More Over-run Gels

Time control on the power supply cuts power to the gel at the end of the run. It will also beep and count up to remind you the gel is ready.

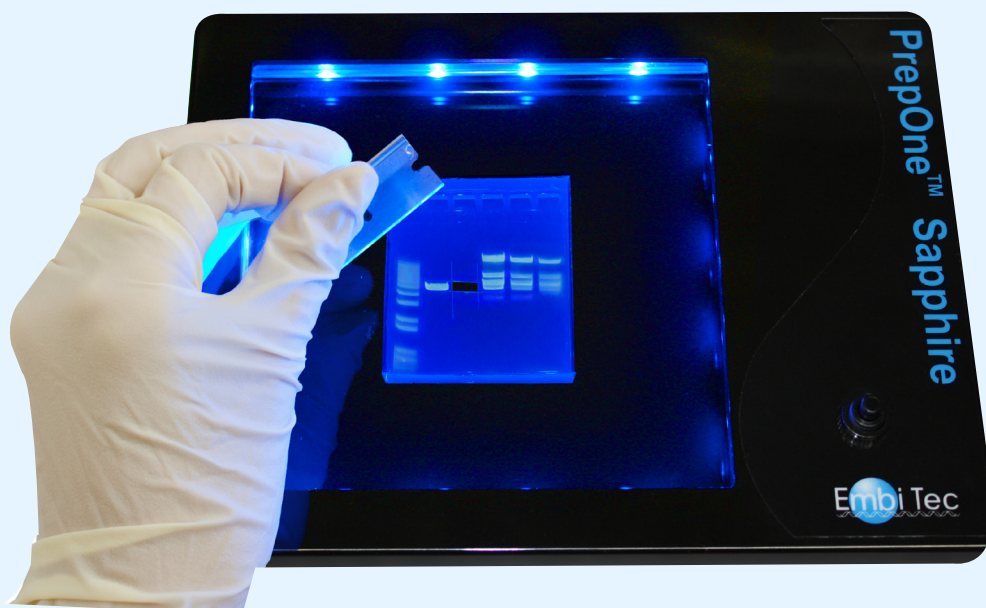
Compact Size

The running unit and the power supply is so small it fits on the palm of your hand!



EP-2100

And Visualize in here:



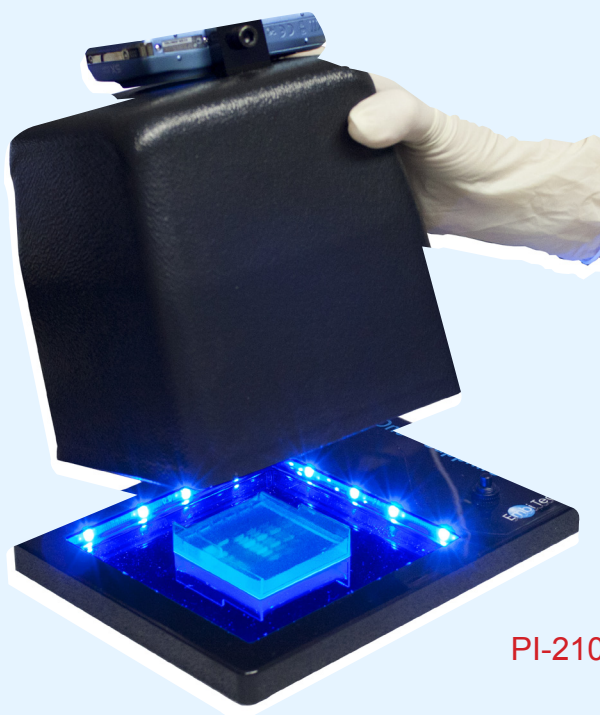
PrepOne™ Sapphire and Image Catcher System

Direct access to the bands

First-of-its-kind blue LED illuminator allows you to visualize your DNA bands without a protective mask, shield or filter obstructing your access to the gel.

Non-Hazardous Dyes

Take down two birds with one stone. Get rid of UV and EtBr - Use the PrepOne Sapphire with the GreenGels instead!



PI-2100

RunOne™, MultiCaster™, PrepOne™, GreenGel™ are trademarks of Embi Tec. Embi Tec® is a registered trademark of C.C. IMEX. GelGreen™ is a trademark of Biotium. Olerup SSP® is a registered trademark of Olerup.

www.interchim.com

~54~

Embi Tec