

Analysis - HPLC - Interchim technology

Column Hardware - Modulo-cart

Modulo-cart® - Interchim's hardware of choice for their HPLC range

Interchim recognize that HPLC hardware is an integral component of a high quality HPLC column.

Extensive time and resources have been dedicated to develop our series of Modulo-cart HPLC column hardware for the Uptisphere® HPLC column range. Each series within the range are precision engineered and provide distinct advantages compared to alternative hardware systems found on the market in terms of ease of use and column performance.

Modulo-cart developments are progressively driven by the application demands of the market. An overview of the hardware range is highlighted on the following page.

The Modulo-cart Quick-Seal (QS) system is the central system within the Uptisphere® hardware range and is utilized in the majority of the Uptisphere® columns for analytical requirement. The distinct engineering attributes of the QS series are explored later in this section.

A 'K' designation on a series of column hardware highlights that a range of guard columns is available within the series. For example : Within the Modulo-cart Quick-Seal series, columns supplied with designation 'QK' consist of the analytical column with an integrated guard holder + one packed guard cartridge.



Modulo-cart XS



Modulo-cart QS

Modulo-cart QK



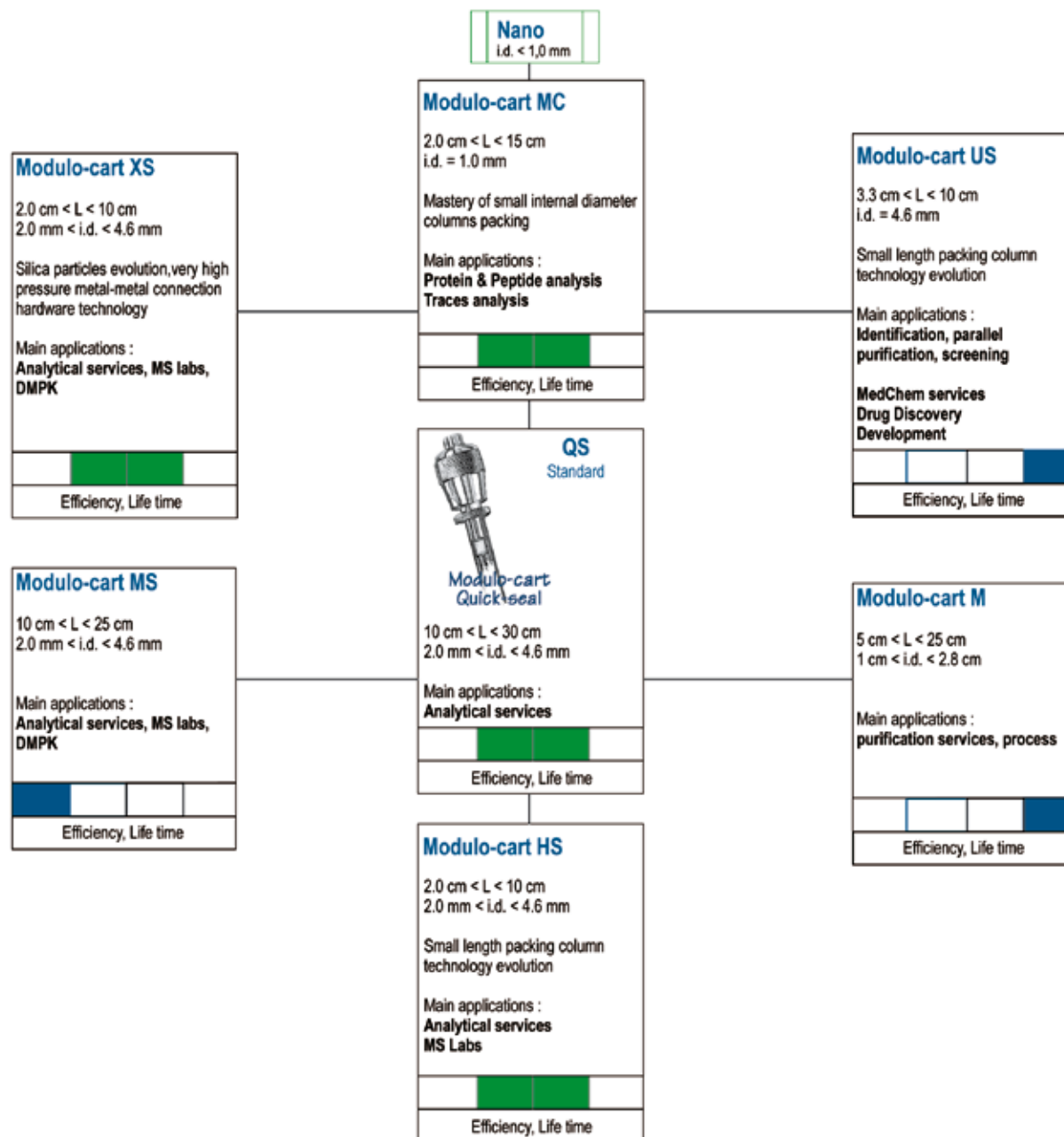
Modulo-cart Prep



Modulo-cart Nano LC

Analysis - HPLC - Interchim technology

Column Hardware - Modulo-cart Quick Seal



Analysis - HPLC - Interchim technology

Column Hardware - Modulo-cart Quick Seal

Modulo-cart Quick Seal Hardware

The Modulo-cart Quick Seal (QS) hardware system provides up to 15% gains in column efficiency compared to competitor systems. QS systems can operate at pressures greater than 800 bar and are compatible for use in super critical fluid chromatography. The extensive attention to detail of this cartridge based system and the precision engineering is highlighted in the pictures below.

Additional benefits :

- Hand-tight fitting
- Direct connection between the guard cartridge and the analytical column
- Encapsulated frits are easy to remove
- No drying during storage time
- The carbon spiked PEEK on stainless steel guarantees a long life time

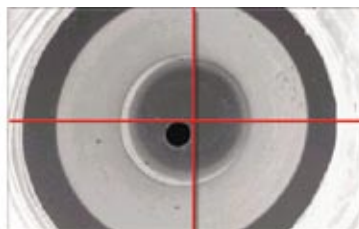
Column i.d. (mm)	Tubing i.d. (inches)	Flow rate (ml/min)
1.0 - 2.1	0.005	0.05 - 0.2
2.1 - 3.0	0.005 - 0.007	0.20 - 0.5
3.0 - 3.9 - 4.0 - 4.6	0.007 - 0.010	0.50 - 1.0
4.6 - 6.0 - 7.8 - 9.4 - 10	0.010	2.0 - 10
10.0 - 21.2	0.010 - 0.020	10 - 25
50	0.020 - 0.045	50 - 100

The Modulo-Cart Quick Seal is available in lengths ranging from 33 -to- 300mm and internal diameters from 1.0 -to- 4.6mm.

Capillary port

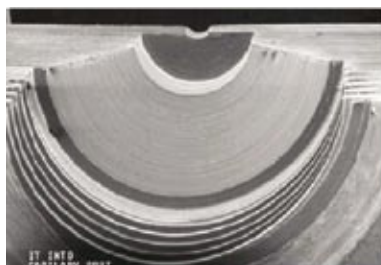


Modulo-cart Quick Seal

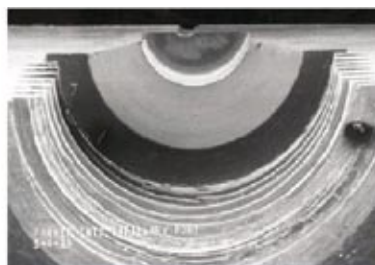


Competitor

Thread



Modulo-cart Quick Seal



Competitor

Analysis - HPLC - Interchim technology

Modulo-cart Quick seal

